

SOLDERLESS TERMINALS & CONNECTORS



NICHIFU



We are always seeking to improve our quality and develop new products.

NICHIFU has been a first-class, quality manufacturer of solderless terminals and sleeves for over 60 years.

Since 1951, as a solderless terminal/sleeve manufacturer, NICHIFU has sought to produce safe products which connect and provide electricity for the people of the world. Currently, the application of our products are expanding into new sectors of the world market, such as energy and home appliances.

All of our quality products undergo close inspection under the standards of our quality control. Also, our mass-production system has enabled us to quickly supply our customers low-priced products. Of course, our production is also flexible, allowing us to produce custom-made products upon request.

We constantly strive to improve quality, lower production cost, and expand the use of automatic tooling.

ISO9001



JQA-QM3410

NICHIFU TERMINAL
INDUSTRIES CO., LTD

RoHS

RoHS compliant products

RoHS 6 RoHS 6 compliant products

RoHS 10 RoHS 10 compliant products

RoHS 6

Current production items are RoHS 6 compliant. Products manufactured before the effective date may still be on the market. Inquire us with the part numbers and lot numbers, if RoHS compliant products needed.

RoHS 10

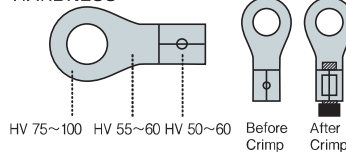
Current production items are RoHS 10 compliant. Products manufactured before the effective date may still be on the market. Inquire us with the part numbers and lot numbers, if RoHS compliant products needed.

HS terminal High Solid

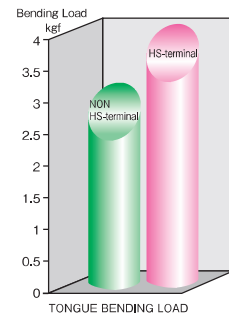
With a harder terminal tongue, fewer bending problems during installation, transportation and application

Nichifu's advanced technology has enabled the production with hardened tongue keeping softness of the barrel area unchanged. Our HS-terminals offer a tongue hardness of HV75-100 compared with the HV55 of non-HS terminals. 40% improvement in hardness that eliminates accidental bending. Thus, corrective straightening is not required, making installation quick and easy. With no change to the hardness of the barrel, the HS-terminal has the same crimping performance as non-HS terminals. Another distinguished feature of the HS is the notch at the center of brazed seam which designates the proper crimping position.

HARDNESS



Also available in spade and pin styles.

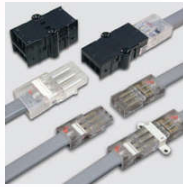


Harder tongue keeps the tongue area straight and flat when compared to non HS-terminals.

Notch located at center of brazed seam, to target crimping position.

Annealed barrel, keeps softness for easier crimp.

INDOOR ELECTRICAL WIRING



PLUG JOINT CONNECTORS ▶ [P.97](#)

One touch and quick joint of indoor electrical wires. Branch wiring also available.



JOINT COVERS ▶ [P.135](#)

Protect wire joint area. Soft vinyl translucent cover makes instant visual inspection. Snap onto the suspension bolt.



ROMEX CABLE SUPPORTERS ▶ [P.135](#)

Prevent temperature rise of wires and also deterioration of wire insulation. Easy fit on the suspension bolt.



QUICK LOCK CONNECTORS ▶ [P.95](#)

Designed to grip wire at two (2) places to prevent slipping off. ●QLX for solid copper wire. Translucent housing enables visual inspection of inserted wires.

●QL MC for 0.9~1.2mm diameter solid copper wire.

●QL SQ is a high temperature connector mainly for fire-detectors.



CENTER PIN TERMINALS ▶ [P.30](#)

The Pin stuck out center of terminal barrel to fit smoothly in narrower terminal block. Insulation cap (UL94V-0) for each Pin terminal are available.



EXTRA LONG BUTTS ▶ [P.25](#)

Less distortion on Butt when crimped one side. Easy and smooth installation.



INSULATION CAPS (OPEN END CONNECTOR) ▶ [P.135](#)

Protect the area of crimping connectors. Soft insulator conforms to RoHS. E-M(中)/E-L(大) Green translucent. E-S(小) Red translucent.

PRODUCTION COLOR [REFERENCE]

INSULATION CAPS



PIN TERMINALS (with CAP)



END CAPS



INSULATED TERMINALS

TMEV (Vinyl)
TMEX (Polycarbonate)



TMEN (Nylon)

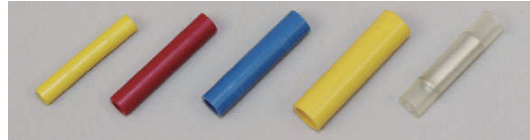


TMDV (Vinyl)



INSULATED BUTT-PARALLEL CONNECTORS

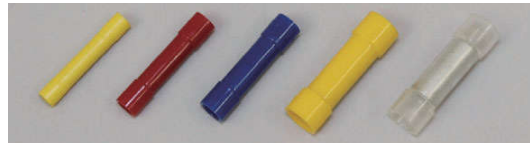
TGV (Vinyl)



TGN (Nylon)



TMV (Vinyl)



TMN (Nylon)



INSULATED PIN TERMINALS

TGV (Vinyl)



TGN (Nylon)



CLOSED END CONNECTORS



TORQUE SCREW DRIVERS

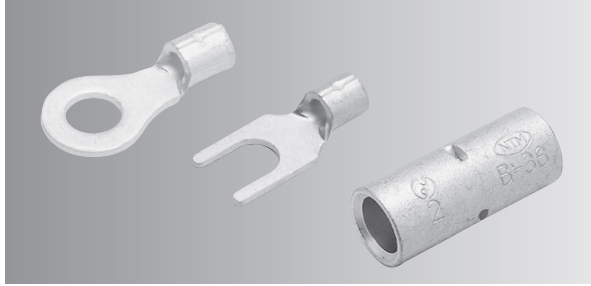


HIGH TEMP CLOSED END CONNECTORS



NON-INSULATED TERMINALS & SLEEVES

A



SPECIFICATIONS

- **MATERIAL** : Oxygen free copper strip/tube, (electro-tin-plating)
- **RATED CURRENT** : Please see amperage rating table for insulated wires. (Page 147)

STANDARDS

- Japanese Industrial Standards, JIS C2805 and JIS C2806.
- UL 486A (File No. E44245)
- CSA C22.2 (File No. LR-28418)



FOR SAFETY USE

Please observe the following points to prevent over-heat and possible fire.

- Copper wire only.
- Use our recommended tools.
- Use with specified wire range.

(NOTE)

APPLICABLE WIRE

- Wire range and performance ratings comply with JIS standard wire (IV, KIV, VSF).
- Inquire when solid wire is used for the 14 mm² or above terminals.

UL / CSA

To have UL/CSA listed or certified, use proper Nichifu crimp tool. To find correct tool, see our tool selection, page 145~146.

WIRE STRIP LENGTH

Strip length should be approx. 2mm longer than barrel length. (conductor should come out 1mm from both ends)

STRUCTURE OF OUR PART NUMBER

R 1.25 - 3

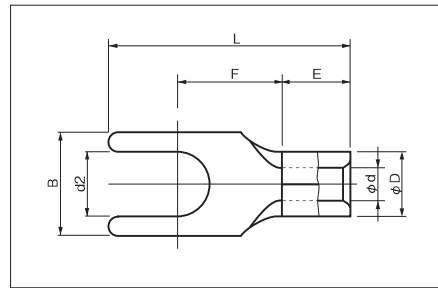
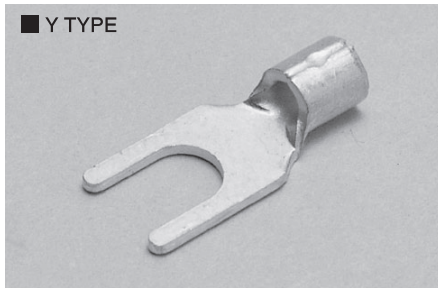
Shape of tongue	Nominal size	Stud size(mm)
R : RING	1.25 → 1.25mm ²	
RD : RING,DOUBLE STUD	2 → 2mm ²	
CB : SQUARE RING	3.5 → 3.5mm ² etc	
FT : FLAG RING		

1.25 Y - 3

Nominal size	Shape of tongue	Stud size(mm)
1.25 → 1.25mm ²	Y : SPADE	
2 → 2mm ²	LY : LOCKING SPADE	
3.5 → 3.5mm ² etc		

SPADE TERMINALS (Y TYPE)

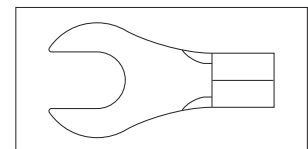
A



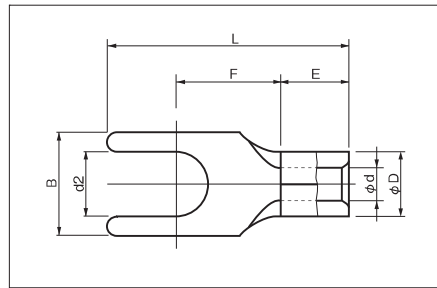
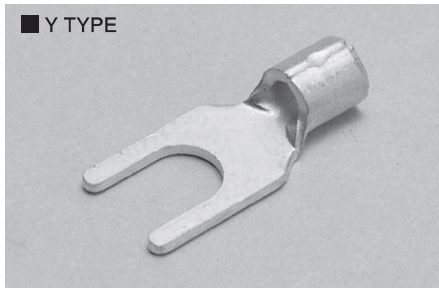
RoHS 10
See page 2

PART NUMBER	DIMENSIONS mm							WIRE RANGE			TOOL No.		STD QTY/BOX									
	d2	B	L	F	E	φ D	φ d	SOLID mm	STRANDED mm ²	AWG	HAND TOOL No.											
											TOOL BODY No.	DIES No.										
0.3Y-2	○ 2.2	5.2	12.0	4.9	4.5	2.2	1.0	-			NH 69 NA 10 NA 3 N10 04 N3 70		1,000 (100×10)									
0.3Y-3	○ 3.2																					
0.3Y-3.5N	○ 3.7	15.0	5.8																			
0.3Y-4N	○ 4.3			6.4										6.6								
0.3Y-5	○ 5.3	8.0	15.5	7.0																		
0.75Y-3	○ 3.2	5.6	14.5	5.8	4.5	2.5	1.4	-	0.3 } 0.75	22-18	NH 69 NA 10 NA 3 N10 05 N3 69		1,000 (100×10)									
0.75Y-3.5	○ 3.7	5.8																				
0.75Y-4	○ 4.3	6.4												15.0	6.0							
1.25Y-2.5	○ 2.7	4.7	11.7	5.1										4.5	3.4	1.7	0.57 } 1.44	0.25 } 1.65	22-16	NH 1 NH 69 NA 10 NA 3 N10 01 N3 7		1,000 (100×10)
1.25Y-3K	○	5.6	15.0	5.8																		
1.25Y-3S	○	3.2	5.7	11.9	4.8																	
1.25Y-3	○		5.8	15.0	5.8																	
1.25Y-3N	○		16.0	6.6																		
1.25Y-3.5K	○	3.7	5.6	15.0	5.8																	
1.25Y-3.5	○		5.8	15.0	5.8																	
1.25Y-3L	○		6.2	16.0	6.8																	
1.25Y-4N	○	4.3	6.4		6.6																	
1.25Y-4S	○		7.0	16.4	7.6																	
1.25Y-4M	○		8.1		7.5																	
1.25Y-4L	○		9.6	17.5	8.3																	
1.25Y-5	○	5.3	9.6	17.5	8.3																	
1.25Y-6	○	6.4	11.0	19.0	8.6																	
2Y-3S	○ 3.2	5.6	15.8	6.6	4.5	4.2	2.3	1.14 } 1.82	1.04 } 2.63	16-14	NH 1 NH 9 NH 69 NA 10 NA 3 N10 02 N3 7		1,000 (100×10)									
2Y-3		5.9																				
2Y-3.5K	○ 3.7	5.6																				
2Y-3.5S		5.8																				
2Y-3.5	○	6.4												7.6								
2Y-3.5L																						
2Y-4N	○ 4.3		6.6																			
2Y-4S		7.0	16.0	7.0																		
2Y-4		8.0		7.1																		
2Y-4M		10.0	17.1	8.7																		
2Y-5	○ 5.3	8.0	16.0	7.1																		
2Y-5M		10.0	17.1	8.7																		
2Y-5L		12.0	18.0	8.5																		
2Y-6	○ 6.4		20.0	8.6																		
2Y-8	○ 8.4	14.0	22.0	11.5																		

NOTE 1) ○ : UL, CSA 2) Refer to page 12 for UL/CSA and proper strip length of wire.
3) Tongue shape of 1.25Y-3S/14Y-6/14Y-8 is shown on the right.



SPADE TERMINALS (Y TYPE)

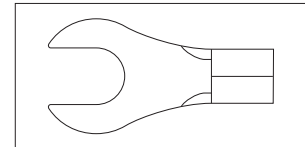


A

RoHS 10
See page 2

PART NUMBER	DIMENSIONS mm							WIRE RANGE			TOOL No.		STD QTY/BOX		
	d2	B	L	F	E	φD	φd	SOLID mm	STRANDED mm ²	AWG	HAND TOOL No.				
											TOOL BODY No.	DIES No.			
3.5Y-4 ○	4.3	8.0	18.0	7.2	6.0	5.0	3.0	1.82	2.63	12	NA 10 NA 3	NH 1 NH 9	1,000 (100×10)		
3.5Y-5 ○	5.3	9.5	20.0	8.3				2.4	4.6						N10 03 N3 7
3.5Y-6 ○	6.4	12.0	22.0	9.8											
5.5Y-3.5N	3.7	7.0	17.0	7.2	6.5	5.6	3.4	1.82 2.89	2.63 6.64	12-10	NA 10 NA 3	NH 1 NH 9	1,000 (100×10)		
5.5Y-4S ○	4.3	8.4	18.2												
5.5Y-4 ○		9.0	12.0												
5.5Y-5 ○	5.2	12.5	25.2												
5.5Y-6 ○	6.4	15	28.2												
5.5Y-8	8.4		14.2												
8Y-5 ○	5.3	12.0	24.0	8.6	8.4	7.1	4.5	2.89	6.64	8	NA 20	NH 1, NH 9 NOP 60, NOM 60	100		
8Y-6 ○	6.4							3.65	10.52			NA 20		N20 08	
14Y-6	6.4	16.0	31.7	14.5	10.0	9.0	5.8	-	10.52 16.78	6	NA 20	NH 9, NOP 60 NOM 60, NOP 150HA	100		
14Y-8	8.4		31.2									N20 14			

NOTE 1) ○ : UL, CSA 2) Refer to page 12 for UL/CSA and proper strip length of wire.
3) Tongue shape of 1.25Y-3S/14Y-6/14Y-8 is shown on the right.



CRIMPING TOOLS

○NH 13 (HAND RATCHET TOOL)
INSULATED TERMINALS & SLEEVES
3.5, 5.5mm²



WEIGHT = 900g LENGTH = 325mm

NH 65 (HAND RATCHET TOOL)
TGT 1.25mm²



WEIGHT = 230g LENGTH = 190mm (SHORT HANDLE)

○NH 37 (HAND RATCHET TOOL)
CLOSED ENDS & INTERMEDIATE CONNECTORS
1.25, 2, 5.5mm²



WEIGHT = 500g LENGTH = 260mm

NH 64 (HAND RATCHET TOOL)
WP CONNECTOR
1.25mm², 2mm²



WEIGHT = 250g LENGTH = 180mm (SHORT HANDLE)

○NH 36 B (HAND RATCHET TOOL)
CLOSED ENDS & INTERMEDIATE CONNECTORS
2, 5.5, 8mm²



WEIGHT = 520g LENGTH = 267mm

NH 69 (HAND RATCHET TOOL)
NON-INSULATED TERMINAL & SLEEVE
0.3 / 0.5 · 0.75 · 1.25 · 2mm²



WEIGHT = 250g LENGTH = 180mm (SHORT HANDLE)

NH 40 (HAND RATCHET TOOL)
SQ CE-2HP · 5HP



WEIGHT = 430g LENGTH = 240mm

NH 71A (HAND RATCHET TOOL)
110 SERIES EASY LOCK CONNECTOR
0.2 ~ 0.3, 0.5 ~ 0.75, 0.9 ~ 1.25mm²



WEIGHT = 300g LENGTH = 210mm (SHORT HANDLE)

UL/CSA

Crimp with our tool for UL/CSA listed products.

Otherwise crimps may not be approved by UL/CSA.

NOTE 1) ● : JIS, UL·CSA ● : JIS ○ : UL·CSA

H

CRIMPING TOOLS

NH 82A (HAND RATCHET TOOL)

HEAT SHRINK TERMINAL (SR.SB)
0.5mm², 1.25mm², 2mm², 5.5mm²



WEIGHT = 560g LENGTH = 260mm

NOP 120 (HYDRAULIC TOOL)

CLAMP CONNECTORS
T20, 26, 44, 60, 76, 98, 122



WEIGHT = 2.9kg LENGTH = 460mm OUTPUT = 59KN

NH79A (HAND RATCHET TOOL)

WIRE ENDS
TE0.5 ~ TE6



WEIGHT = 360g LENGTH = 200mm

●NOP 60 (HYDRAULIC TOOL)

NON-INSULATED TERMINALS &
SLEEVES
TUBULAR TERMINALS
(8) 14, 22, 38, 60mm²
() OPTIONAL DIES



WEIGHT = 2.1kg LENGTH = 364mm OUTPUT = 54KN

NH 89 (HAND RATCHET TOOL)

WIRE ENDS
TE0.14 ~ TE6 0.14~10mm² (AWG26-8)



WEIGHT = 362g LENGTH = 175mm

●NOP 150HA (HYDRAULIC TOOL)

NON-INSULATED TERMINALS & SLEEVES,
TUBULAR TERMINALS
14, 22, 38, 60, 70, 80, 100, 150mm²



WEIGHT = 3.7kg LENGTH = 512mm OUTPUT = 90KN

NH25A (HAND RATCHET TOOL)

CLAMP CONNECTORS
T7,11,16



WEIGHT = 410g LENGTH = 240mm

H

UL/CSA

Crimp with our tool for UL/CSA listed products.

Otherwise crimps may not be approved by UL/CSA.

NOTE 1) ● : JIS, UL · CSA ● : JIS ○ : UL · CSA

CRIMPING TOOLS

● **NOM 60 (BATTERY OPERATED HYDRAULIC TOOL)**
 NON-INSULATED TERMINALS & SLEEVES,
 TUBULAR TERMINALS
 (5.5, 8) 14, 22, 38, 60mm² () OPTION



WEIGHT 2.5kg
 (INCL. BATTERY & DIE)
 LENGTH 286mm
 OUTPUT 54KN

● **NOH 300K (HYDRAULIC HEAD)**
 NON-INSULATED TERMINALS
 60, 80, 100, 150, 180, 200, 325mm²
 (OPTION 8, 14, 22, 38, 70)



WEIGHT 7.5kg
 LENGTH 210mm
 OUTPUT 226KN

● **NOM 150 (BATTERY OPERATED HYDRAULIC TOOL)**
 NON-INSULATED TERMINALS & SLEEVES,
 TUBULAR TERMINALS
 14, 22, 38, 60, 70, 80, 100, 150mm²



WEIGHT 3.5kg
 (INCL. BATTERY & DIE)
 LENGTH 340mm
 OUTPUT 88KN

NP 520 (HYDRAULIC HEAD)

CLAMP CONNECTORS
 T154, 190, 240, 288,
 365, 450, 560, 700
 COMPRESSION TERMINALS
 14 ~ 500mm²
 (ALL OPTIONAL DIES)



WEIGHT 17.5kg
 LENGTH 380mm
 OUTPUT 294KN

NOH 360 (HYDRAULIC HEAD)

CLAMP CONNECTORS
 T154, 190, 240, 288, 365
 (OPTION 20, 26, 44, 60, 76, 98, 122)



WEIGHT 4.5kg
 LENGTH 286mm
 OUTPUT 118KN

NOP 700 (HYDRAULIC PUMP)

WEIGHT 9.6kg
 LENGTH 580mm
 WIDTH 140mm
 HEIGHT 160mm



● **NOM 2500A (MOTOR DRIVEN HYDRAULIC PUMP)**



WEIGHT 14kg
 WIDTH 306mm
 LENGTH 205mm
 HEIGHT 393mm
 AC 100V

● **NOM 3000 (MOTOR DRIVEN HYDRAULIC PUMP)**

WEIGHT 30kg
 WIDTH 330mm
 LENGTH 350mm
 HEIGHT 420mm
 AC 100V



UL/CSA

Crimp with our tool for UL/CSA listed products.

Otherwise crimps may not be approved by UL/CSA.

NOTE 1) ● : JIS, UL·CSA ● : JIS ○ : UL·CSA

