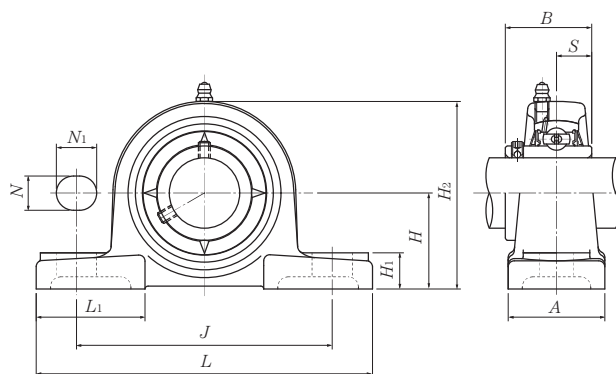
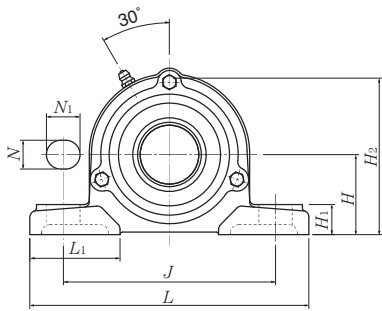


## Pillow blocks cast housing Set screw type

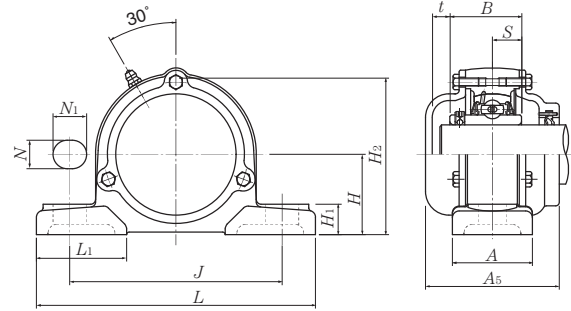


| Shaft dia.   | Unit number <sup>1)</sup>   | Nominal dimensions |                 |                |               |             |                |                |                |                |              |             | Bolt size  | Bearing number   |
|--|---|--------------------|-----------------|----------------|---------------|-------------|----------------|----------------|----------------|----------------|--------------|-------------|------------|--|
|  |   |                    |                 |                |               |             |                |                |                |                |              |             |            |  |
|  |   | mm                 |                 |                |               |             | inch           |                |                |                |              |             |            |  |
| mm<br>inch   |   | H                  | L               | J              | A             | N           | N <sub>1</sub> | H <sub>1</sub> | H <sub>2</sub> | L <sub>1</sub> | B            | S           | mm<br>inch |  |
| <b>25</b><br>13/16<br>7/8<br>15/16<br><b>1</b>     | <b>UCP305D1</b><br>UCP305-013D1<br>UCP305-014D1<br>UCP305-015D1<br>UCP305-100D1 | 45<br>1 49/64      | 175<br>6 7/8    | 132<br>5 3/16  | 45<br>1 25/32 | 17<br>21/32 | 20<br>25/32    | 15<br>19/32    | 85<br>3 11/32  | 54<br>2 1/8    | 38<br>1.4961 | 15<br>0.591 | M14<br>1/2 | <b>UC305D1</b><br>UC305-013D1<br>UC305-014D1<br>UC305-015D1<br>UC305-100D1 |
| <b>30</b><br>1 1/16<br>1 1/8<br>1 3/16             | <b>UCP306D1</b><br>UCP306-101D1<br>UCP306-102D1<br>UCP306-103D1                 | 50<br>1 31/32      | 180<br>7 3/32   | 140<br>5 1/2   | 50<br>1 31/32 | 17<br>21/32 | 20<br>25/32    | 18<br>23/32    | 95<br>3 3/4    | 54<br>2 1/8    | 43<br>1.6929 | 17<br>0.669 | M14<br>1/2 | <b>UC306D1</b><br>UC306-101D1<br>UC306-102D1<br>UC306-103D1                |
| <b>35</b><br>1 1/4<br>1 5/16<br>1 3/8<br>1 7/16    | <b>UCP307D1</b><br>UCP307-104D1<br>UCP307-105D1<br>UCP307-106D1<br>UCP307-107D1 | 56<br>2 13/64      | 210<br>8 9/32   | 160<br>6 5/16  | 56<br>2 7/32  | 17<br>21/32 | 25<br>31/32    | 20<br>25/32    | 106<br>4 3/16  | 60<br>2 3/8    | 48<br>1.8898 | 19<br>0.748 | M14<br>1/2 | <b>UC307D1</b><br>UC307-104D1<br>UC307-105D1<br>UC307-106D1<br>UC307-107D1 |
| <b>40</b><br>1 1/2<br>1 9/16                       | <b>UCP308D1</b><br>UCP308-108D1<br>UCP308-109D1                                 | 60<br>2 23/64      | 220<br>8 21/32  | 170<br>6 11/16 | 60<br>2 3/8   | 17<br>21/32 | 27<br>1 1/16   | 22<br>7/8      | 116<br>4 9/16  | 60<br>2 3/8    | 52<br>2.0472 | 19<br>0.748 | M14<br>1/2 | <b>UC308D1</b><br>UC308-108D1<br>UC308-109D1                               |
| <b>45</b><br>1 5/8<br>1 11/16<br>1 3/4             | <b>UCP309D1</b><br>UCP309-110D1<br>UCP309-111D1<br>UCP309-112D1                 | 67<br>2 41/64      | 245<br>9 21/32  | 190<br>7 15/32 | 67<br>2 5/8   | 20<br>25/32 | 30<br>1 3/16   | 24<br>15/16    | 129<br>5 3/32  | 65<br>2 9/16   | 57<br>2.2441 | 22<br>0.866 | M16<br>5/8 | <b>UC309D1</b><br>UC309-110D1<br>UC309-111D1<br>UC309-112D1                |
| <b>50</b><br>1 13/16<br>1 7/8<br>1 15/16           | <b>UCP310D1</b><br>UCP310-113D1<br>UCP310-114D1<br>UCP310-115D1                 | 75<br>2 61/64      | 275<br>10 13/16 | 212<br>8 11/32 | 75<br>2 15/16 | 20<br>25/32 | 35<br>1 3/8    | 27<br>1 1/16   | 143<br>5 5/8   | 75<br>2 15/16  | 61<br>2.4016 | 22<br>0.866 | M16<br>5/8 | <b>UC310D1</b><br>UC310-113D1<br>UC310-114D1<br>UC310-115D1                |
| <b>55</b><br><b>2</b><br>2 1/16<br>2 1/8<br>2 3/16 | <b>UCP311D1</b><br>UCP311-200D1<br>UCP311-201D1<br>UCP311-202D1<br>UCP311-203D1 | 80<br>3 5/32       | 310<br>12 7/32  | 236<br>9 9/32  | 80<br>3 5/32  | 20<br>25/32 | 38<br>1 1/2    | 30<br>1 3/16   | 154<br>6 1/16  | 85<br>3 11/32  | 66<br>2.5984 | 25<br>0.984 | M16<br>5/8 | <b>UC311D1</b><br>UC311-200D1<br>UC311-201D1<br>UC311-202D1<br>UC311-203D1 |

Remarks: 1) These numbers indicate relubricatable type. If maintenance free type is needed, please order without suffix "D1".  
Note: Please refer to page 44 for size of grease fitting.



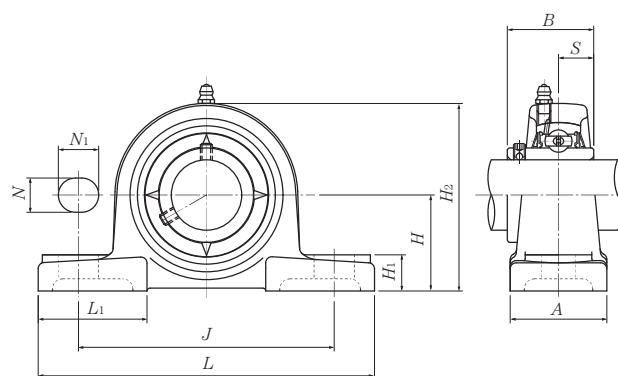
Cast dust cover type (Open end)  
C-UCP...D1



Cast dust cover type (Close end)  
CM-UCP...D1

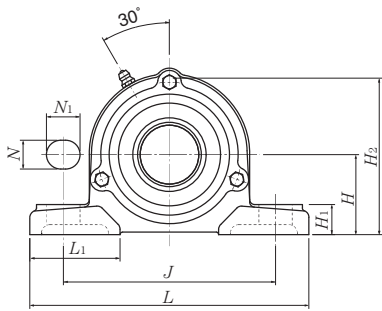
| Housing number <sup>1)</sup> | Unit number <sup>1)</sup><br>cast dust cover type | Nominal dimensions               |                                   |                                   | Mass (approx.) |       |
|------------------------------|---|----------------------------------|-----------------------------------|-----------------------------------|----------------|-------|
|                              |   | mm                               |                                   | inch                              | kg             | lb    |
|                              |   | t                                | H <sub>3</sub>                    | A <sub>5</sub>                    | UCP            | C(CM) |
| P305D1                       | <b>C(CM)-UCP305D1</b>                             | 12                               | 91                                | 80                                | 1.4            | 1.8   |
| P305D1                       | C(CM)-UCP305-013D1                                |                                  |                                   |                                   |                |       |
| P305D1                       | C(CM)-UCP305-014D1                                |                                  |                                   |                                   |                |       |
| P305D1                       | C(CM)-UCP305-015D1                                | 15 <sup>5</sup> / <sub>32</sub>  | 319 <sup>3</sup> / <sub>32</sub>  | 35 <sup>5</sup> / <sub>32</sub>   | 3.1            | 4.0   |
| P305D1                       | C(CM)-UCP305-100D1                                |                                  |                                   |                                   |                |       |
| P306D1                       | <b>C(CM)-UCP306D1</b>                             | 11                               | 105                               | 85                                | 1.8            | 2.5   |
| P306D1                       | C(CM)-UCP306-101D1                                |                                  |                                   |                                   |                |       |
| P306D1                       | C(CM)-UCP306-102D1                                | 7 <sup>7</sup> / <sub>16</sub>   | 4 <sup>1</sup> / <sub>8</sub>     | 31 <sup>1</sup> / <sub>32</sub>   | 4.0            | 5.5   |
| P306D1                       | C(CM)-UCP306-103D1                                |                                  |                                   |                                   |                |       |
| P307D1                       | <b>C(CM)-UCP307D1</b>                             | 13                               | 115                               | 95                                | 2.5            | 3.2   |
| P307D1                       | C(CM)-UCP307-104D1                                |                                  |                                   |                                   |                |       |
| P307D1                       | C(CM)-UCP307-105D1                                |                                  |                                   |                                   |                |       |
| P307D1                       | C(CM)-UCP307-106D1                                | 33 <sup>3</sup> / <sub>64</sub>  | 417 <sup>17</sup> / <sub>32</sub> | 33 <sup>3</sup> / <sub>4</sub>    | 5.5            | 7.1   |
| P307D1                       | C(CM)-UCP307-107D1                                |                                  |                                   |                                   |                |       |
| P308D1                       | <b>C(CM)-UCP308D1</b>                             | 13                               | 125                               | 105                               | 3.1            | 4.0   |
| P308D1                       | C(CM)-UCP308-108D1                                |                                  |                                   |                                   |                |       |
| P308D1                       | C(CM)-UCP308-109D1                                | 33 <sup>3</sup> / <sub>64</sub>  | 429 <sup>29</sup> / <sub>32</sub> | 41 <sup>1</sup> / <sub>8</sub>    | 6.8            | 8.8   |
| P309D1                       | <b>C(CM)-UCP309D1</b>                             | 14                               | 140                               | 110                               | 4.1            | 5.4   |
| P309D1                       | C(CM)-UCP309-110D1                                |                                  |                                   |                                   |                |       |
| P309D1                       | C(CM)-UCP309-111D1                                |                                  |                                   |                                   |                |       |
| P309D1                       | C(CM)-UCP309-112D1                                | 35 <sup>5</sup> / <sub>64</sub>  | 51 <sup>1</sup> / <sub>2</sub>    | 411 <sup>11</sup> / <sub>32</sub> | 9.0            | 12    |
| P310D1                       | <b>C(CM)-UCP310D1</b>                             | 15                               | 156                               | 120                               | 5.6            | 7.0   |
| P310D1                       | C(CM)-UCP310-113D1                                |                                  |                                   |                                   |                |       |
| P310D1                       | C(CM)-UCP310-114D1                                |                                  |                                   |                                   |                |       |
| P310D1                       | C(CM)-UCP310-115D1                                | 19 <sup>19</sup> / <sub>32</sub> | 65 <sup>5</sup> / <sub>32</sub>   | 423 <sup>23</sup> / <sub>32</sub> | 12             | 15    |
| P311D1                       | <b>C(CM)-UCP311D1</b>                             | 15                               | 166                               | 125                               | 7.3            | 8.8   |
| P311D1                       | C(CM)-UCP311-200D1                                |                                  |                                   |                                   |                |       |
| P311D1                       | C(CM)-UCP311-201D1                                |                                  |                                   |                                   |                |       |
| P311D1                       | C(CM)-UCP311-202D1                                |                                  |                                   |                                   |                |       |
| P311D1                       | C(CM)-UCP311-203D1                                | 19 <sup>19</sup> / <sub>32</sub> | 617 <sup>17</sup> / <sub>32</sub> | 429 <sup>29</sup> / <sub>32</sub> | 16             | 19    |

### Pillow blocks cast housing Set screw type

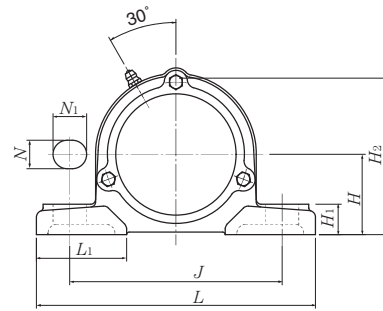
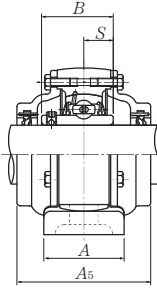


| Shaft dia.<br>mm<br>inch                 | Unit number <sup>1)</sup>  | Nominal dimensions |          |          |         |         |                |                |                |                |        |       | Bolt size<br>mm<br>inch | Bearing number  |
|--|--|--------------------|----------|----------|---------|---------|----------------|----------------|----------------|----------------|--------|-------|-------------------------|---|
|  |  |                    |          |          |         |         |                |                |                |                |        |       |                         |   |
|  |  | mm                 |          |          |         |         |                | inch           |                |                |        |       |                         |   |
|  |  | H                  | L        | J        | A       | N       | N <sub>1</sub> | H <sub>1</sub> | H <sub>2</sub> | L <sub>1</sub> | B      | S     |                         |   |
| 60<br>2 1/4<br>2 5/16<br>2 3/8<br>2 7/16 | UCP312D1<br>UCP312-204D1<br>UCP312-205D1<br>UCP312-206D1<br>UCP312-207D1 | 85                 | 330      | 250      | 85      | 25      | 38             | 32             | 165            | 95             | 71     | 26    | M20                     | UC312D1<br>UC312-204D1<br>UC312-205D1<br>UC312-206D1<br>UC312-207D1 |
|  |  | 3 11/32            | 13       | 9 27/32  | 3 11/32 | 3 1/32  | 1 1/2          | 1 1/4          | 6 1/2          | 3 3/4          | 2.7953 | 1.024 | 3/4                     |   |
| 65<br>2 1/2<br>2 9/16                    | UCP313D1<br>UCP313-208D1<br>UCP313-209D1                                 | 90                 | 340      | 260      | 90      | 25      | 38             | 33             | 176            | 105            | 75     | 30    | M20                     | UC313D1<br>UC313-208D1<br>UC313-209D1                               |
|  |  | 3 35/64            | 13 3/8   | 10 1/4   | 3 17/32 | 3 1/32  | 1 1/2          | 1 5/16         | 6 15/16        | 4 1/8          | 2.9528 | 1.181 | 3/4                     |   |
| 70<br>2 5/8<br>2 11/16<br>2 3/4          | UCP314D1<br>UCP314-210D1<br>UCP314-211D1<br>UCP314-212D1                 | 95                 | 360      | 280      | 90      | 27      | 40             | 35             | 187            | 105            | 78     | 33    | M22                     | UC314D1<br>UC314-210D1<br>UC314-211D1<br>UC314-212D1                |
|  |  | 3 47/64            | 14 3/16  | 11 1/32  | 3 17/32 | 1 1/16  | 1 9/16         | 1 3/8          | 7 3/8          | 4 1/8          | 3.0709 | 1.299 | 7/8                     |   |
| 75<br>2 13/16<br>2 7/8<br>2 15/16<br>3   | UCP315D1<br>UCP315-213D1<br>UCP315-214D1<br>UCP315-215D1<br>UCP315-300D1 | 100                | 380      | 290      | 100     | 27      | 40             | 35             | 198            | 110            | 82     | 32    | M22                     | UC315D1<br>UC315-213D1<br>UC315-214D1<br>UC315-215D1<br>UC315-300D1 |
|  |  | 3 15/16            | 14 31/32 | 11 13/32 | 3 15/16 | 1 1/16  | 1 9/16         | 1 3/8          | 7 25/32        | 4 11/32        | 3.2283 | 1.260 | 7/8                     |   |
| 80<br>3 1/16<br>3 3/8<br>3 3/16          | UCP316D1<br>UCP316-301D1<br>UCP316-302D1<br>UCP316-303D1                 | 106                | 400      | 300      | 110     | 27      | 40             | 40             | 210            | 110            | 86     | 34    | M22                     | UC316D1<br>UC316-301D1<br>UC316-302D1<br>UC316-303D1                |
|  |  | 4 11/64            | 15 3/4   | 11 13/16 | 4 11/32 | 1 1/16  | 1 9/16         | 1 9/16         | 8 9/32         | 4 11/32        | 3.3858 | 1.339 | 7/8                     |   |
| 85<br>3 1/4<br>3 5/16<br>3 7/16          | UCP317D1<br>UCP317-304D1<br>UCP317-305D1<br>UCP317-307D1                 | 112                | 420      | 320      | 110     | 33      | 45             | 40             | 220            | 120            | 96     | 40    | M27                     | UC317D1<br>UC317-304D1<br>UC317-305D1<br>UC317-307D1                |
|  |  | 4 13/32            | 16 17/32 | 12 19/32 | 4 11/32 | 1 5/16  | 1 25/32        | 1 9/16         | 8 21/32        | 4 23/32        | 3.7795 | 1.575 | 1                       |   |
| 90<br>3 7/16<br>3 1/2                    | UCP318D1<br>UCP318-307D1<br>UCP318-308D1                                 | 118                | 430      | 330      | 110     | 33      | 45             | 45             | 235            | 120            | 96     | 40    | M27                     | UC318D1<br>UC318-307D1<br>UC318-308D1                               |
|  |  | 4 41/64            | 16 15/16 | 13       | 4 11/32 | 1 5/16  | 1 25/32        | 1 25/32        | 9 1/4          | 4 23/32        | 3.7795 | 1.575 | 1                       |   |
| 95<br>3 5/8<br>3 11/16<br>3 3/4          | UCP319D1<br>UCP319-310D1<br>UCP319-311D1<br>UCP319-312D1                 | 125                | 470      | 360      | 120     | 36      | 50             | 45             | 250            | 125            | 103    | 41    | M30                     | UC319D1<br>UC319-310D1<br>UC319-311D1<br>UC319-312D1                |
|  |  | 4 59/64            | 18 1/2   | 14 3/16  | 4 23/32 | 1 13/32 | 1 31/32        | 1 25/32        | 9 27/32        | 4 29/32        | 4.0551 | 1.614 | 1 1/8                   |   |

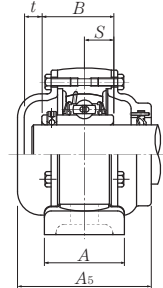
Remarks: 1) These numbers indicate relubricatable type. If maintenance free type is needed, please order without suffix "D1".  
Note: Please refer to page 44 for size of grease fitting.



Cast dust cover type (Open end)  
C-UCP...D1

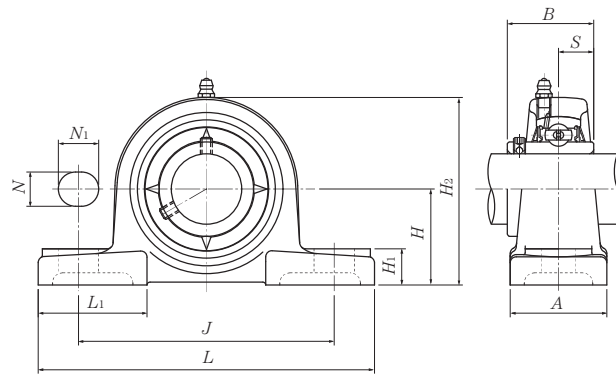


Cast dust cover type (Close end)  
CM-UCP...D1



| Housing number <sup>1)</sup> | Unit number <sup>1)</sup><br>cast dust cover type | Nominal dimensions |                |                | Mass (approx.) |       |
|------------------------------|---|--------------------|----------------|----------------|----------------|-------|
|                              |   | mm                 |                | inch           | kg             | lb    |
|                              |   | t                  | H <sub>3</sub> | A <sub>5</sub> | UCP            | C(CM) |
| P312D1                       | <b>C(CM)-UCP312D1</b>                             | 16                 | 179            | 135            | 9.4            | 11    |
| P312D1                       | <b>C(CM)-UCP312-204D1</b>                         |                    |                |                |                |       |
| P312D1                       | <b>C(CM)-UCP312-205D1</b>                         |                    |                |                |                |       |
| P312D1                       | <b>C(CM)-UCP312-206D1</b>                         | 5/8                | 7 1/16         | 5 5/16         | 21             | 24    |
| P312D1                       | <b>C(CM)-UCP312-207D1</b>                         |                    |                |                |                |       |
| P313D1                       | <b>C(CM)-UCP313D1</b>                             | 19                 | 190            | 140            | 10             | 12    |
| P313D1                       | <b>C(CM)-UCP313-208D1</b>                         |                    |                |                |                |       |
| P313D1                       | <b>C(CM)-UCP313-209D1</b>                         | 3/4                | 7 15/32        | 5 1/2          | 22             | 26    |
| P314D1                       | <b>C(CM)-UCP314D1</b>                             | 19                 | 200            | 140            | 12             | 14    |
| P314D1                       | <b>C(CM)-UCP314-210D1</b>                         |                    |                |                |                |       |
| P314D1                       | <b>C(CM)-UCP314-211D1</b>                         | 3/4                | 7 7/8          | 5 1/2          | 26             | 31    |
| P314D1                       | <b>C(CM)-UCP314-212D1</b>                         |                    |                |                |                |       |
| P315D1                       | <b>C(CM)-UCP315D1</b>                             | 19                 | 210            | 150            | 14             | 17    |
| P315D1                       | <b>C(CM)-UCP315-213D1</b>                         |                    |                |                |                |       |
| P315D1                       | <b>C(CM)-UCP315-214D1</b>                         |                    |                |                |                |       |
| P315D1                       | <b>C(CM)-UCP315-215D1</b>                         | 3/4                | 8 9/32         | 5 29/32        | 31             | 37    |
| P315D1                       | <b>C(CM)-UCP315-300D1</b>                         |                    |                |                |                |       |
| P316D1                       | <b>C(CM)-UCP316D1</b>                             | 18                 | 221            | 155            | 17             | 21    |
| P316D1                       | <b>C(CM)-UCP316-301D1</b>                         |                    |                |                |                |       |
| P316D1                       | <b>C(CM)-UCP316-302D1</b>                         | 23/32              | 8 11/16        | 6 3/32         | 37             | 46    |
| P316D1                       | <b>C(CM)-UCP316-303D1</b>                         |                    |                |                |                |       |
| P317D1                       | <b>C(CM)-UCP317D1</b>                             | 21                 | 235            | 170            | 19             | 24    |
| P317D1                       | <b>C(CM)-UCP317-304D1</b>                         |                    |                |                |                |       |
| P317D1                       | <b>C(CM)-UCP317-305D1</b>                         | 13/16              | 9 1/4          | 6 11/16        | 42             | 53    |
| P317D1                       | <b>C(CM)-UCP317-307D1</b>                         |                    |                |                |                |       |
| P318D1                       | <b>C(CM)-UCP318D1</b>                             | 21                 | 246            | 170            | 22             | 27    |
| P318D1                       | <b>C(CM)-UCP318-307D1</b>                         |                    |                |                |                |       |
| P318D1                       | <b>C(CM)-UCP318-308D1</b>                         | 13/16              | 9 11/16        | 6 11/16        | 49             | 60    |
| P319D1                       | <b>C(CM)-UCP319D1</b>                             | 20                 | 258            | 180            | 26             | 32    |
| P319D1                       | <b>C(CM)-UCP319-310D1</b>                         |                    |                |                |                |       |
| P319D1                       | <b>C(CM)-UCP319-311D1</b>                         | 25/32              | 10 5/32        | 7 3/32         | 57             | 71    |
| P319D1                       | <b>C(CM)-UCP319-312D1</b>                         |                    |                |                |                |       |

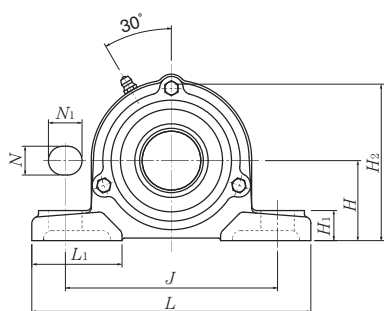
**Pillow blocks cast housing**  
**Set screw type**



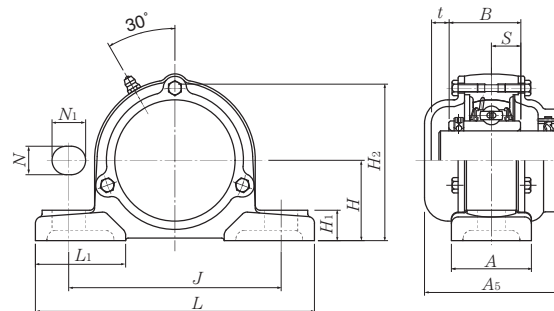
| Shaft dia.                          | Unit number <sup>1)</sup> | Nominal dimensions |     |     |     |     |                |                |                |                |     |     | Bolt size  | Bearing number |             |
|-------------------------------------|---------------------------|--------------------|-----|-----|-----|-----|----------------|----------------|----------------|----------------|-----|-----|------------|----------------|-------------|
|                                     |                           |                    |     |     |     |     |                |                |                |                |     |     |            |                |             |
|                                     |                           | mm                 |     |     |     |     | inch           |                |                |                |     |     |            |                |             |
| mm<br>inch                          |                           | H                  | L   | J   | A   | N   | N <sub>1</sub> | H <sub>1</sub> | H <sub>2</sub> | L <sub>1</sub> | B   | S   | mm<br>inch |                |             |
| <b>100</b>                          | <b>UCP320D1</b>           |                    | 140 | 490 | 380 | 120 | 36             | 50             | 50             | 275            | 130 | 108 | 42         | M30            | UC320D1     |
| <b>3<sup>13</sup>/<sub>16</sub></b> | <b>UCP320-313D1</b>       |                    |     |     |     |     |                |                |                |                |     |     |            |                | UC320-313D1 |
| <b>3<sup>7</sup>/<sub>8</sub></b>   | <b>UCP320-314D1</b>       |                    |     |     |     |     |                |                |                |                |     |     |            |                | UC320-314D1 |
| <b>3<sup>15</sup>/<sub>16</sub></b> | <b>UCP320-315D1</b>       |                    |     |     |     |     |                |                |                |                |     |     |            |                | UC320-315D1 |
| <b>4</b>                            | <b>UCP320-400D1</b>       |                    |     |     |     |     |                |                |                |                |     |     |            |                | UC320-400D1 |
| <b>105</b>                          | <b>UCP321D1</b>           |                    | 140 | 490 | 380 | 120 | 36             | 50             | 50             | 280            | 130 | 112 | 44         | M30            | UC321D1     |
| <b>110</b>                          | <b>UCP322D1</b>           |                    | 150 | 520 | 400 | 140 | 40             | 55             | 55             | 300            | 135 | 117 | 46         | M33            | UC322D1     |
| <b>120</b>                          | <b>UCP324D1</b>           |                    | 160 | 570 | 450 | 140 | 40             | 55             | 65             | 320            | 140 | 126 | 51         | M33            | UC324D1     |
| <b>130</b>                          | <b>UCP326D1</b>           |                    | 180 | 600 | 480 | 140 | 40             | 55             | 75             | 355            | 140 | 135 | 54         | M33            | UC326D1     |
| <b>140</b>                          | <b>UCP328D1</b>           |                    | 200 | 620 | 500 | 140 | 40             | 55             | 75             | 390            | 140 | 145 | 59         | M33            | UC328D1     |

Remarks: 1) These numbers indicate relubricatable type. If maintenance free type is needed, please order without suffix "D1".

Note: Please refer to page 44 for size of grease fitting.



Cast dust cover type (Open end)  
C-UCP...D1



Cast dust cover type (Close end)  
CM-UCP...D1

| Housing number <sup>1)</sup> | Unit number <sup>1)</sup><br>cast dust cover type | Nominal dimensions |                  |                  | Mass (approx.) |       |
|------------------------------|---|--------------------|------------------|------------------|----------------|-------|
|                              |   | mm                 |                  | inch             | kg             | lb    |
|                              |   | t                  | H <sub>3</sub>   | A <sub>5</sub>   | UCP            | C(CM) |
| P320D1                       | <b>C(CM)-UCP320D1</b>                             | 20                 | 283              | 190              | 33             | 39    |
| P320D1                       | <b>C(CM)-UCP320-313D1</b>                         |                    |                  |                  |                |       |
| P320D1                       | <b>C(CM)-UCP320-314D1</b>                         | $25\frac{5}{32}$   | $11\frac{5}{32}$ | $7\frac{15}{32}$ | 73             | 86    |
| P320D1                       | <b>C(CM)-UCP320-315D1</b>                         |                    |                  |                  |                |       |
| P320D1                       | <b>C(CM)-UCP320-400D1</b>                         |                    |                  |                  |                |       |
| P321D1                       | <b>C(CM)-UCP321D1</b>                             | 20                 | 290              | 195              | 35             | 42    |
| P322D1                       | <b>C(CM)-UCP322D1</b>                             | 20                 | 313              | 200              | 43             | 52    |
| P324D1                       | <b>C(CM)-UCP324D1</b>                             | 22                 | 335              | 215              | 50             | 67    |
| P326D1                       | <b>C(CM)-UCP326D1</b>                             | 21                 | 375              | 225              | 69             | 83    |
| P328D1                       | <b>C(CM)-UCP328D1</b>                             | 21                 | 407              | 235              | 84             | 99    |