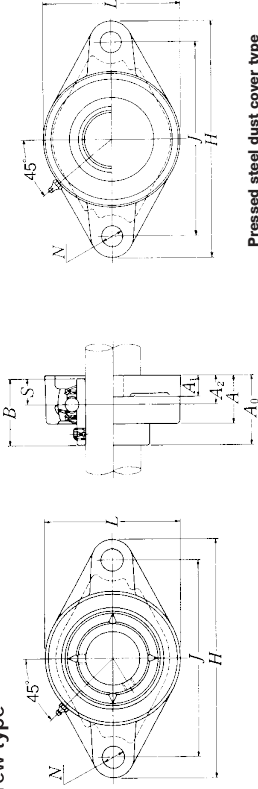


UCFL2

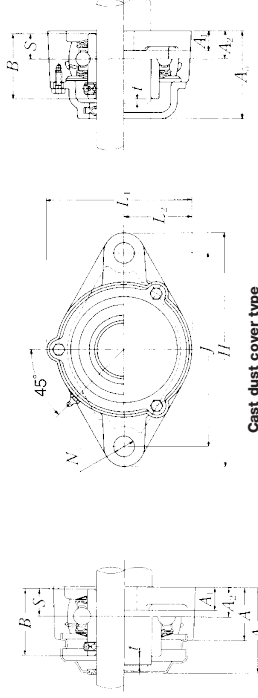
Rhombus flanged unit, cast housing Set screw type



Pressed steel dust cover type
Open end ZJUCFL...D1
Closed end ZM-UCFL...D1

Shaft dia. mm inch	Unit number (1)	Nominal dimensions mm inch													Bearing number
		H	J	A ₂	A ₁	A	N	L	A ₀	B	S	L ₁	L ₂	H ₁	
12 1/2	UCFL201D1	113	90	15	11	25.5	12	60	33.3	31	12.7	M10	UC201D1		
	UCFL201-008D1	4 7/16	3 5/8	19/32	7/16	1	15/32	2 3/8	1 5/16	1.2205	0.500	3/8	UC201-008D1		
	UCFL202D1	113	90	15	11	25.5	12	60	33.3	31	12.7	M10	UC202D1		
9/16 5/8	UCFL202-009D1	4 7/16	3 5/8	19/32	7/16	1	15/32	2 3/8	1 5/16	1.2205	0.500	3/8	UC202-009D1		
	UCFL202-010D1	4 7/16	3 5/8	19/32	7/16	1	15/32	2 3/8	1 5/16	1.2205	0.500	3/8	UC202-010D1		
17 11/16	UCFL203D1	113	90	15	11	25.5	12	60	33.3	31	12.7	M10	UC203D1		
	UCFL203-011D1	4 7/16	3 5/8	19/32	7/16	1	15/32	2 3/8	1 5/16	1.2205	0.500	3/8	UC203-011D1		
20 3/4	UCFL204D1	113	90	15	11	25.5	12	60	33.3	31	12.7	M10	UC204D1		
	UCFL204-012D1	4 7/16	3 5/8	19/32	7/16	1	15/32	2 3/8	1 5/16	1.2205	0.500	3/8	UC204-012D1		
25 13/16	UCFL205D1	130	99	16	13	27	16	68	35.8	34.1	14.3	M14	UC205D1		
	UCFL205-013D1	5 1/8	3 9/16	5/8	1/2	1 1/16	5/8	2 1/16	1 9/32	1.3425	0.563	1/2	UC205-013D1		
7/8 15/16	UCFL205-014D1	5 1/8	3 9/16	5/8	1/2	1 1/16	5/8	2 1/16	1 9/32	1.3425	0.563	1/2	UC205-014D1		
	UCFL205-015D1	5 1/8	3 9/16	5/8	1/2	1 1/16	5/8	2 1/16	1 9/32	1.3425	0.563	1/2	UC205-015D1		
1	UCFL205-100D1	148	117	18	13	31	16	80	40.2	38.1	15.9	M14	UC205-100D1		
30 1 1/16	UCFL206D1	148	117	18	13	31	16	80	40.2	38.1	15.9	M14	UC206D1		
	UCFL206-101D1	5 9/16	4 39/64	45/64	1/2	1 7/32	5/8	3 3/32	1 57/64	1.5000	0.626	1/2	UC206-101D1		
1 1/8	UCFL206-102D1	148	117	18	13	31	16	80	40.2	38.1	15.9	M14	UC206-102D1		
	UCFL206-103D1	148	117	18	13	31	16	80	40.2	38.1	15.9	M14	UC206-103D1		
1 1/4	UCFL206-104D1	161	130	19	15	34	16	90	44.4	42.9	17.5	M14	UC206-104D1		
1 1/4 1 5/16	UCFL207-104D1	161	130	19	15	34	16	90	44.4	42.9	17.5	M14	UC207-104D1		
	UCFL207-105D1	161	130	19	15	34	16	90	44.4	42.9	17.5	M14	UC207-105D1		
1 3/8	UCFL207-106D1	161	130	19	15	34	16	90	44.4	42.9	17.5	M14	UC207-106D1		
1 7/8	UCFL207-107D1	175	144	21	15	36	16	100	51.2	49.2	19	M14	UC207-107D1		
40 1 1/2 1 9/16	UCFL208D1	175	144	21	15	36	16	100	51.2	49.2	19	M14	UC208D1		
	UCFL208-108D1	6 7/8	5 49/64	69/64	19/32	1 1/8	5/8	3 15/16	2 1/4	1.9370	0.748	1/2	UC208-108D1		
	UCFL208-109D1	6 7/8	5 49/64	69/64	19/32	1 1/8	5/8	3 15/16	2 1/4	1.9370	0.748	1/2	UC208-109D1		

Note (1) These numbers indicate relubricatable type. If maintenance free type is needed, please order without suffix "D1".
Remarks Please refer to page A21 for size or grease fitting.

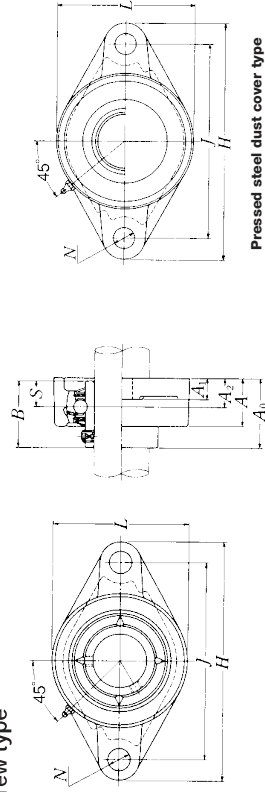


Cast dust cover type
Open end C-UCFL...D1
Closed end CM-UCFL...D1

Housing number	Unit number (1) pressed steel dust cover type	Unit number (1) cast dust cover type	Nominal dimensions mm inch					Mass of unit kg lb		
			t _{max}	A ₄	A ₅	L ₁	L ₂	UCFL	Z(ZM) C(CM)	
FL204D1	Z(ZM)-UCFL201D1	C(CM)-UCFL201D1	2	38	46	67	30	0.5	0.5	0.6
	Z(ZM)-UCFL201-008D1	C(CM)-UCFL201-008D1	5/64	1 1/2	1 13/16	2 5/8	1 3/16	1.1	1.1	1.3
	Z(ZM)-UCFL202D1	C(CM)-UCFL202D1	2	38	46	67	30	0.5	0.5	0.6
FL204D1	Z(ZM)-UCFL202-009D1	C(CM)-UCFL202-009D1	5/64	1 1/2	1 13/16	2 5/8	1 3/16	1.1	1.1	1.3
	Z(ZM)-UCFL202-010D1	C(CM)-UCFL202-010D1	5/64	1 1/2	1 13/16	2 5/8	1 3/16	1.1	1.1	1.3
	Z(ZM)-UCFL203D1	C(CM)-UCFL203D1	2	38	46	67	30	0.5	0.5	0.6
FL204D1	Z(ZM)-UCFL203-011D1	C(CM)-UCFL203-011D1	5/64	1 1/2	1 13/16	2 5/8	1 3/16	1.1	1.1	1.3
	Z(ZM)-UCFL204D1	C(CM)-UCFL204D1	2	38	46	67	30	0.4	0.4	0.6
	Z(ZM)-UCFL204-012D1	C(CM)-UCFL204-012D1	5/64	1 1/2	1 13/16	2 5/8	1 3/16	0.9	0.9	1.3
FL205D1	Z(ZM)-UCFL205D1	C(CM)-UCFL205D1	2	40	51	74	34	0.6	0.6	0.8
	Z(ZM)-UCFL205-013D1	C(CM)-UCFL205-013D1	5/64	1 9/32	2	2 29/32	1 11/32	1.3	1.3	1.8
FL205D1	Z(ZM)-UCFL205-014D1	C(CM)-UCFL205-014D1	5/64	1 9/32	2	2 29/32	1 11/32	1.3	1.3	1.8
	Z(ZM)-UCFL205-015D1	C(CM)-UCFL205-015D1	5/64	1 9/32	2	2 29/32	1 11/32	1.3	1.3	1.8
FL205D1	Z(ZM)-UCFL205-100D1	C(CM)-UCFL205-100D1	2	45	56	85	40	0.9	0.9	1.2
	Z(ZM)-UCFL206D1	C(CM)-UCFL206D1	5/64	1 1/4	2 7/32	3 11/32	1 9/16	2.0	2.0	2.6
FL206D1	Z(ZM)-UCFL206-101D1	C(CM)-UCFL206-101D1	3	49	59	97	45	1.2	1.2	1.4
	Z(ZM)-UCFL206-102D1	C(CM)-UCFL206-102D1	5/64	1 1/4	2 7/32	3 11/32	1 9/16	2.6	2.6	3.1
FL206D1	Z(ZM)-UCFL206-103D1	C(CM)-UCFL206-103D1	5/64	1 1/4	2 7/32	3 11/32	1 9/16	2.6	2.6	3.1
	Z(ZM)-UCFL206-104D1	C(CM)-UCFL206-104D1	5/64	1 1/4	2 7/32	3 11/32	1 9/16	2.6	2.6	3.1
FL207D1	Z(ZM)-UCFL207D1	C(CM)-UCFL207D1	3	49	59	97	45	1.2	1.2	1.4
	Z(ZM)-UCFL207-104D1	C(CM)-UCFL207-104D1	5/64	1 15/16	2 5/16	3 13/16	1 25/32	2.6	2.6	3.1
FL207D1	Z(ZM)-UCFL207-105D1	C(CM)-UCFL207-105D1	5/64	1 15/16	2 5/16	3 13/16	1 25/32	2.6	2.6	3.1
	Z(ZM)-UCFL207-106D1	C(CM)-UCFL207-106D1	5/64	1 15/16	2 5/16	3 13/16	1 25/32	2.6	2.6	3.1
FL207D1	Z(ZM)-UCFL207-107D1	C(CM)-UCFL207-107D1	3	56	66	106	50	1.5	1.5	1.9
	Z(ZM)-UCFL208D1	C(CM)-UCFL208D1	5/64	2 3/16	2 19/32	4 9/16	1 31/32	3.3	3.3	4.2

UCFL2

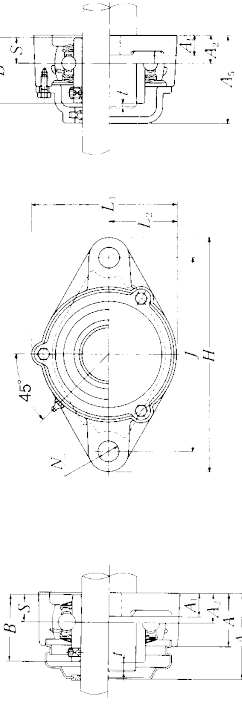
Rhombus flanged unit, cast housing Set screw type



Pressed steel dust cover type
Open end ZJUCFL...D1
Closed end CM-UCFL...D1

Shaft dia. mm inch	Unit number (1)	Nominal dimensions mm inch											Bearing number	Bolt size mm inch	
		H	J	A ₂	A ₁	A	N	L	A ₀	B	S				
45	UCFL209D1	188	148	22	16	38	19	108	52.2	49.2	19			UC209D1	M16
1 5/8	UCFL209-110D1													UC209-110D1	
1 11/16	UCFL209-111D1	7 13/32	5 5/64	59/64	5/8	1 1/2	3/4	4 1/4	2 1/16	1.9370	0.748			UC209-111D1	5/8
1 1/4	UCFL209-112D1													UC209-112D1	
50	UCFL210D1	197	157	22	16	40	19	115	54.6	51.6	19			UC210D1	M16
1 9/16	UCFL210-113D1													UC210-113D1	
1 7/8	UCFL210-114D1	7 3/4	6 5/16	59/64	5/8	1 9/16	3/4	4 7/8	2 5/32	2.0315	0.748			UC210-114D1	5/8
1 15/16	UCFL210-115D1													UC210-115D1	
2	UCFL210-200D1													UC210-200D1	
55	UCFL211D1	224	184	25	18	43	19	130	58.4	55.6	22.2			UC211D1	M16
2	UCFL211-200D1													UC211-200D1	
2 1/16	UCFL211-201D1	8 3/16	7 1/4	69/64	29/32	1 1/16	3/4	5 1/2	2 5/64	2.1890	0.874			UC211-201D1	5/8
2 1/8	UCFL211-202D1													UC211-202D1	
2 13/16	UCFL211-203D1													UC211-203D1	
60	UCFL212D1	250	202	29	18	48	23	140	68.7	65.1	25.4			UC212D1	M20
2 1/4	UCFL212-204D1													UC212-204D1	
2 5/16	UCFL212-205D1	9 7/32	7 7/64	1 3/4	29/32	1 7/8	29/32	5 1/2	2 5/64	2.5630	1.000			UC212-205D1	3/4
2 3/8	UCFL212-206D1													UC212-206D1	
2 7/16	UCFL212-207D1													UC212-207D1	
65	UCFL213D1	258	210	30	22	50	23	155	69.7	65.1	25.4			UC213D1	M20
2 1/2	UCFL213-208D1	10 5/32	8 7/64	1 1/16	7/8	1 9/32	29/32	6 3/32	2 3/4	2.5630	1.000			UC213-208D1	3/4
2 9/16	UCFL213-209D1													UC213-209D1	
70	UCFL214D1	265	216	31	22	54	23	160	75.4	74.6	30.2			UC214D1	M20
2 5/8	UCFL214-210D1													UC214-210D1	
2 11/16	UCFL214-211D1	10 7/16	8 1/2	1 1/32	7/8	2 1/8	29/32	6 5/16	2 5/32	2.9370	1.189			UC214-211D1	3/4
2 3/4	UCFL214-212D1													UC214-212D1	

Note (1) These numbers indicate relubricatable type. If maintenance free type is needed, please order without suffix "D1".
Remarks Please refer to page A21 for size of grease fitting.

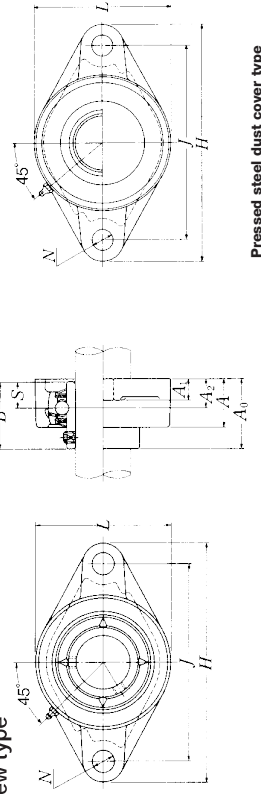


Cast dust cover type
Open end C-UCFL...D1
Closed end CM-UCFL...D1

Housing number	Unit number (1) pressed steel dust cover type	Unit number (1) cast dust cover type	Nominal dimensions mm inch						Mass of unit kg lb	
			t max.	A ₄	A ₅	L ₁	L ₂	UCFL	Z(ZM)	C(CM)
FL209D1	Z(ZM)-UCFL209D1	C(CM)-UCFL209D1	3	57	70	113	54	1.8	1.9	2.3
FL209D1	Z(ZM)-UCFL209-110D1	C(CM)-UCFL209-110D1								
FL209D1	Z(ZM)-UCFL209-111D1	C(CM)-UCFL209-111D1	1/8	2 1/4	2 3/4	4 1/16	2 1/8	4.0	4.2	5.1
FL209D1	Z(ZM)-UCFL209-112D1	C(CM)-UCFL209-112D1								
FL210D1	Z(ZM)-UCFL210D1	C(CM)-UCFL210D1	3	60	72	120	58	2.0	2.1	2.7
FL210D1	Z(ZM)-UCFL210-113D1	C(CM)-UCFL210-113D1								
FL210D1	Z(ZM)-UCFL210-114D1	C(CM)-UCFL210-114D1	1/8	2 3/8	2 7/8	4 3/32	2 3/8	4.4	4.6	6.0
FL210D1	Z(ZM)-UCFL210-115D1	C(CM)-UCFL210-115D1								
FL210D1	—	C(CM)-UCFL210-200D1								
FL211D1	Z(ZM)-UCFL211D1	C(CM)-UCFL211D1	4	64	75	133	65	2.9	3.0	3.4
FL211D1	Z(ZM)-UCFL211-200D1	C(CM)-UCFL211-200D1								
FL211D1	Z(ZM)-UCFL211-201D1	C(CM)-UCFL211-201D1	5/32	2 1/2	2 5/8	5 1/4	2 5/8	6.4	6.6	7.5
FL211D1	Z(ZM)-UCFL211-202D1	C(CM)-UCFL211-202D1								
FL211D1	Z(ZM)-UCFL211-203D1	C(CM)-UCFL211-203D1								
FL212D1	Z(ZM)-UCFL212D1	C(CM)-UCFL212D1	4	74	86	144	70	3.8	4.0	4.6
FL212D1	Z(ZM)-UCFL212-204D1	C(CM)-UCFL212-204D1								
FL212D1	Z(ZM)-UCFL212-205D1	C(CM)-UCFL212-205D1	5/32	2 5/8	3 3/8	5 5/32	2 3/4	8.4	8.8	10
FL212D1	Z(ZM)-UCFL212-206D1	C(CM)-UCFL212-206D1								
FL212D1	—	C(CM)-UCFL212-207D1								
FL213D1	Z(ZM)-UCFL213D1	C(CM)-UCFL213D1	4	76	90	157	78	4.8	4.9	5.8
FL213D1	Z(ZM)-UCFL213-208D1	C(CM)-UCFL213-208D1	5/32	3	3 1/32	6 3/16	3 1/16	11	11	13
FL213D1	Z(ZM)-UCFL213-209D1	C(CM)-UCFL213-209D1								
FL214D1	—	C(CM)-UCFL214D1	4	—	98	164	80	5.4	—	7.7
FL214D1	—	C(CM)-UCFL214-210D1								
FL214D1	—	C(CM)-UCFL214-211D1	5/32	—	3 5/32	6 5/8	3 5/8	12	—	17
FL214D1	—	C(CM)-UCFL214-212D1								

UCFL2

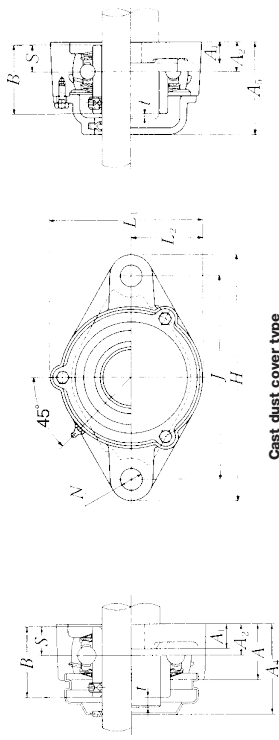
Rhombus flanged unit, cast housing Set screw type



Pressed steel dust cover type
Open end ZJUCFL...D1
Closed end ZM-UCFL...D1

Shaft dia. mm inch	Unit number (1)	Nominal dimensions mm inch										Bolt size mm inch	Bearing number
		H	J	A ₂	A ₁	A	N	L	A ₀	B	S		
75	UCFL215D1	275	225	34	22	56	23	165	78.5	77.8	33.3	M20	UC215D1
2 ¹³ / ₁₆	UCFL215-213D1												UC215-213D1
2 ⁷ / ₈	UCFL215-214D1												UC215-214D1
2 ¹ / ₈	UCFL215-215D1	10 ³ / ₁₆	8 ⁵ / ₆₄	1 ¹ / ₃₂	7 ₆	2 ⁷ / ₃₂	2 ⁹ / ₃₂	6 ¹ / ₂	3 ³ / ₃₂	3.0630	1.311	3/4	UC215-215D1
3	UCFL215-300D1												UC215-300D1
80	UCFL216D1	290	233	34	22	58	25	180	83.3	82.6	33.3	M22	UC216D1
3 ¹ / ₈	UCFL216-301D1												UC216-301D1
3 ¹ / ₈	UCFL216-302D1	11 ¹³ / ₃₂	9 ¹ / ₆₄	1 ¹ / ₃₂	7 ₆	2 ⁹ / ₃₂	2 ⁹ / ₆₄	7 ³ / ₃₂	3 ⁵ / ₃₂	3.2520	1.311	7/8	UC216-302D1
3 ³ / ₁₆	UCFL216-303D1												UC216-303D1
85	UCFL217D1	305	248	36	24	63	25	190	87.6	85.7	34.1	M22	UC217D1
3 ¹ / ₄	UCFL217-304D1												UC217-304D1
3 ⁵ / ₁₆	UCFL217-305D1	12	9 ⁹ / ₆₄	1 ⁷ / ₆₄	1 ⁵ / ₁₆	2 ¹⁵ / ₃₂	2 ¹⁵ / ₆₄	7 ¹⁵ / ₃₂	3 ³⁹ / ₆₄	3.3740	1.343	7/8	UC217-305D1
3 ⁷ / ₁₆	UCFL217-307D1												UC217-307D1
90	UCFL218D1	320	265	40	24	68	25	205	96.3	96	39.7	M22	UC218D1
3 ¹ / ₂	UCFL218-308D1	12 ¹³ / ₃₂	10 ⁷ / ₁₆	1 ³ / ₆₄	1 ⁵ / ₁₆	2 ¹¹ / ₁₆	2 ⁹ / ₁₆	8 ¹ / ₁₆	3 ⁵ / ₁₆	3.7795	1.563	7/8	UC218-308D1

Note (1) These numbers indicate relubricatable type. If maintenance free type is needed, please order without suffix "D1".
Remarks Please refer to page A21 for size of grease fitting.

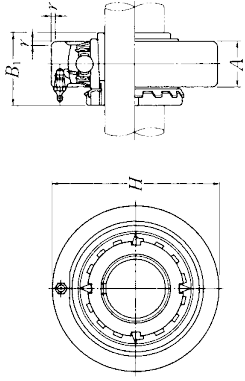


Cast dust cover type
Open end C-UCFL...D1
Closed end CM-UCFL...D1

Housing number	Unit number (1) cast dust cover type	Unit number pressed steel dust cover type	Nominal dimensions mm inch					Mass of unit kg lb		
			t max.	A ₄	A ₅	L ₁	L ₂	UCFL	Z(ZM)	C(CM)
FL215D1	C(CM)-UCFL215D1	—	4	—	102	169	82	6.0	—	7.1
FL215D1	C(CM)-UCFL215-213D1	—								
FL215D1	C(CM)-UCFL215-214D1	—	5 ⁹ / ₃₂	—	4 ¹ / ₃₂	6 ³ / ₃₂	3 ³ / ₃₂	13	—	16
FL215D1	C(CM)-UCFL215-215D1	—								
FL215D1	C(CM)-UCFL215-300D1	—								
FL216D1	C(CM)-UCFL216D1	—	4	—	106	183	90	7.4	—	8.6
FL216D1	C(CM)-UCFL216-301D1	—								
FL216D1	C(CM)-UCFL216-302D1	—	5 ⁹ / ₃₂	—	4 ³ / ₁₆	7 ⁷ / ₃₂	3 ⁷ / ₃₂	16	—	19
FL216D1	C(CM)-UCFL216-303D1	—								
FL217D1	C(CM)-UCFL217D1	—	5	—	114	192	95	8.8	—	10
FL217D1	C(CM)-UCFL217-304D1	—								
FL217D1	C(CM)-UCFL217-305D1	—	1 ⁹ / ₆₄	—	4 ¹ / ₂	7 ⁹ / ₁₆	3 ³ / ₄	19	—	22
FL217D1	C(CM)-UCFL217-307D1	—								
FL218D1	C(CM)-UCFL218D1	—	5	—	122	205	102	11	—	13
FL218D1	C(CM)-UCFL218-308D1	—	1 ⁹ / ₆₄	—	4 ¹³ / ₁₆	8 ¹ / ₁₆	4 ¹ / ₃₂	24	—	29

UKCX

Cartridge unit, cast housing
Adapter type



Shaft dia. mm inch	Unit number ⁽¹⁾ / ₍₂₎ / ₍₃₎	Nominal dimensions mm inch				Bearing number	Housing number	Mass of unit kg lb
		H	A	r	B ₁			
20 $\frac{3}{4}$	UKCX05D1;H2305X	90	27	2	35	UKX05D1;H2305X	CX05D1	1.1
	UKCX05D1;HE2305	3.5433	$1\frac{1}{16}$	0.079	1.378	UKX05D1;HE2305	CX05D1	2.4
25 $\frac{7}{8}$ 1	UKCX06D1;H2306X	100	30	2.5	38	UKX06D1;H2306X	CX06D1	1.4
	UKCX06D1;HS2306	3.9370	$1\frac{3}{16}$	0.098	1.496	UKX06D1;HS2306	CX06D1	3.1
	UKCX06D1;HE2306X					UKX06D1;HE2306X	CX06D1	
30 $1\frac{1}{8}$	UKCX07D1;H2307X	110	34	2.5	43	UKX07D1;H2307X	CX07D1	1.8
	UKCX07D1;HS2307	4.3307	$1\frac{11}{32}$	0.098	1.693	UKX07D1;HS2307	CX07D1	4.0
35 $1\frac{1}{4}$ $1\frac{1}{2}$	UKCX08D1;H2308X	120	38	2.5	46	UKX08D1;H2308X	CX08D1	2.5
	UKCX08D1;HE2308X	4.7244	$1\frac{1}{2}$	0.098	1.811	UKX08D1;HE2308X	CX08D1	5.5
	UKCX08D1;HS2308X					UKX08D1;HS2308X	CX08D1	
40 $1\frac{7}{16}$ $1\frac{1}{2}$ $1\frac{5}{8}$	UKCX09D1;H2309X	120	38	2.5	50	UKX09D1;H2309X	CX09D1	2.2
	UKCX09D1;HA2309					UKX09D1;HA2309	CX09D1	
	UKCX09D1;HE2309X	4.7244	$1\frac{1}{2}$	0.098	1.969	UKX09D1;HE2309X	CX09D1	4.9
	UKCX09D1;HS2309X					UKX09D1;HS2309X	CX09D1	
45 $1\frac{5}{8}$ $1\frac{11}{16}$ $1\frac{3}{4}$	UKCX10D1;H2310X	130	40	2.5	55	UKX10D1;H2310X	CX10D1	2.7
	UKCX10D1;HS2310					UKX10D1;HS2310	CX10D1	
	UKCX10D1;HA2310	5.1181	$1\frac{37}{64}$	0.098	2.165	UKX10D1;HA2310	CX10D1	6.0
	UKCX10D1;HE2310X					UKX10D1;HE2310X	CX10D1	
50 $1\frac{7}{8}$ $1\frac{15}{16}$ 2	UKCX11D1;H2311X	150	42	3	59	UKX11D1;H2311X	CX11D1	4.0
	UKCX11D1;HS2311					UKX11D1;HS2311	CX11D1	
	UKCX11D1;HA2311	5.9055	$2\frac{1}{32}$	0.118	2.323	UKX11D1;HA2311	CX11D1	8.8
	UKCX11D1;HE2311XY					UKX11D1;HE2311XY	CX11D1	
55 $2\frac{1}{8}$	UKCX12D1;H2312X	160	44	3	62	UKX12D1;H2312X	CX12D1	3.9
	UKCX12D1;HS2312	6.2992	$1\frac{47}{64}$	0.118	2.441	UKX12D1;HS2312	CX12D1	8.6

Notes (1) These numbers indicate relubricatable type. If maintenance free type is needed, please order without suffix "D1".

(2) Adapter number with suffix "X" means a narrow slot type adapter sleeve.

In this case the lock washer with the straight inner prong should be used.

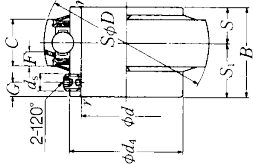
(3) For HE2311XY, screw thread pitch different from the standard is applied, because of the thin thread section of sleeve.

To distinguish it, a suffix "Y" is added.

Remarks Please refer to page A21 for size of grease fitting.

UC2

Ball bearings Set screw type



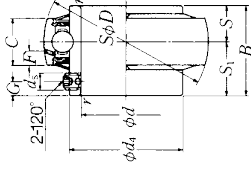
Shaft dia. mm inch	Bearing (1) number	Nominal dimensions										
		d	D	B	C	r	S	S ₁	G	d _s	d _i	F
1/2	UC201D1	12	47	31	17	0.6	12.7	18.3	4.5	M5×0.8	29.6	4.7
	UC201-008D1	0.5000	1.8504	1.2205	0.6693	0.024	0.500	0.720	0.177	No.10-32UNF	1.1654	0.185
	UC202D1	15	47	31	17	0.6	12.7	18.3	4.5	M5×0.8	29.6	4.7
9/16 5/8	UC202-009D1	0.5625	1.8504	1.2205	0.6693	0.024	0.500	0.720	0.177	No.10-32UNF	1.1654	0.185
	UC202-010D1	0.6250										
	UC203D1	17	47	31	17	0.6	12.7	18.3	4.5	M5×0.8	29.6	4.7
11/16	UC203-011D1	0.6875	1.8504	1.2205	0.6693	0.024	0.500	0.720	0.177	No.10-32UNF	1.1654	0.185
	UC204D1	20	47	31	17	1	12.7	18.3	4.5	M5×0.8	29.6	4.7
	UC204-012D1	0.7500	1.8504	1.2205	0.6693	0.039	0.500	0.720	0.177	No.10-32UNF	1.1654	0.185
3/4	UC205D1	25	52	34.1	17	1	14.3	19.8	5	M5×0.8	33.9	4.5
	UC205-013D1	0.8125										
	UC205-014D1	0.8750										
	UC205-015D1	0.9375	2.0472	1.3425	0.6693	0.039	0.563	0.780	0.197	No.10-32UNF	1.3346	0.177
	UC205-100D1	1.0000										
1	UC206D1	30	62	38.1	19	1	15.9	22.2	5	M6×0.75	40.8	4.6
	UC206-101D1	1.0625										
	UC206-102D1	1.1250										
	UC206-103D1	1.1875	2.4409	1.5000	0.7480	0.039	0.626	0.874	0.197	1/4-28UNF	1.6063	0.181
	UC206-104D1	1.2500										
	UC207D1	35	72	42.9	20	1.5	17.5	25.4	6	M6×0.75	46.8	4.6
1 1/4	UC207-104D1	1.2500										
	UC207-105D1	1.3125										
	UC207-106D1	1.3750	2.8346	1.6890	0.7874	0.059	0.689	1.000	0.236	1/4-28UNF	1.8425	0.181
	UC207-107D1	1.4375										
	UC208D1	40	80	49.2	21	1.5	19	30.2	8	M8×1	53	4.5
1 1/2	UC208-108D1	1.5000	3.1496	1.9370	0.8268	0.059	0.748	1.189	0.315	5/16-24UNF	2.0866	0.177
	UC208-109D1	1.5625										
1 3/4	UC209D1	45	85	49.2	22	1.5	19	30.2	8	M8×1	57.5	4.9
	UC209-110D1	1.6250	3.3465	1.9370	0.8661	0.059	0.748	1.189	0.315	5/16-24UNF	2.2638	0.193
	UC209-111D1	1.6875										
	UC209-112D1	1.7500										
	UC209-113D1	1.8125										

Note (1) These numbers indicate relubricatable type. If maintenance free type is needed, please order without suffix "D1".

Basic load ratings	N	Mass	
		kg	lb
dynamic C _r	12 800	6 650	0.21
	2 890	1 500	0.46
static C _{0r}	12 800	6 650	0.20
	2 890	1 500	0.44
dynamic C _r	12 800	6 650	0.18
	2 890	1 500	0.39
static C _{0r}	12 800	6 650	0.17
	2 890	1 500	0.39
dynamic C _r	14 000	7 850	0.20
	3 150	1 770	0.51
static C _{0r}	14 000	7 850	0.53
	3 150	1 770	0.46
dynamic C _r	19 500	11 300	0.32
	4 400	2 540	0.77
static C _{0r}	19 500	11 300	0.82
	4 400	2 540	0.73
dynamic C _r	25 700	15 300	0.46
	5 750	3 450	1.21
static C _{0r}	25 700	15 300	1.15
	5 750	3 450	1.08
dynamic C _r	29 100	17 800	0.64
	6 550	4 000	1.52
static C _{0r}	29 100	17 800	1.46
	6 550	4 000	1.46
dynamic C _r	32 500	20 400	0.68
	7 350	4 600	1.76
static C _{0r}	32 500	20 400	1.68
	7 350	4 600	1.57

UC2

Ball bearings Set screw type



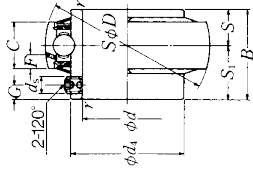
Shaft dia. mm inch	Bearing (1) number	Nominal dimensions										d ₅	d ₄	F	
		d	D	B	C	r min.	S	S ₁	G	d ₅	d ₄				
50	UC210D1	50	90	51.6	24	1.5	19	32.6	9	M8×1	62.4	5.9			
1 ¹⁵ / ₁₆	UC210-113D1	1.8125													
1 ⁷ / ₈	UC210-114D1	1.8750													
1 ⁹ / ₁₆	UC210-115D1	1.9375	3.5433	2.0315	0.9449	0.059	0.748	1.283	0.354	⁵ / ₁₆ -24UNF	2.4567	0.232			
2	UC210-200D1	2.0000													
55	UC211D1	55	100	55.6	25	2	22.2	33.4	9	M8×1	69	6.0			
2	UC211-200D1	2.0000													
2 ¹ / ₁₆	UC211-201D1	2.0625	3.9370	2.1890	0.9843	0.079	0.874	1.315	0.354	⁵ / ₁₆ -24UNF	2.7165	0.236			
2 ³ / ₁₆	UC211-202D1	2.1250													
2 ³ / ₈	UC211-203D1	2.1875													
60	UC212D1	60	110	65.1	27	2	25.4	39.7	10	M10×1.25	77	6.2			
2 ¹ / ₄	UC212-204D1	2.2500													
2 ⁵ / ₁₆	UC212-205D1	2.3125													
2 ⁹ / ₁₆	UC212-206D1	2.3750	4.3307	2.5630	1.0630	0.079	1.000	1.563	0.394	³ / ₈ -24UNF	3.0315	0.244			
2 ⁷ / ₁₆	UC212-207D1	2.4375													
65	UC213D1	65	120	65.1	32	2	25.4	39.7	10	M10×1.25	82.5	8.7			
2 ¹ / ₂	UC213-208D1	2.5000	4.7244	2.5630	1.2598	0.079	1.000	1.563	0.394	³ / ₈ -24UNF	3.2480	0.343			
2 ⁵ / ₁₆	UC213-209D1	2.5625													
70	UC214D1	70	125	74.6	33	2	30.2	44.4	12	M10×1.25	87	8.8			
2 ⁷ / ₈	UC214-210D1	2.6250													
2 ¹⁵ / ₁₆	UC214-211D1	2.6875	4.9213	2.9370	1.2992	0.079	1.189	1.748	0.472	³ / ₈ -24UNF	3.4252	0.346			
2 ³ / ₄	UC214-212D1	2.7500													
75	UC215D1	75	130	77.8	34	2	33.3	44.5	12	M10×1.25	93	9.0			
2 ⁵ / ₈	UC215-213D1	2.8125													
2 ⁷ / ₈	UC215-214D1	2.8750	5.1181	3.0630	1.3386	0.079	1.311	1.752	0.472	³ / ₈ -24UNF	3.6614	0.354			
2 ⁹ / ₁₆	UC215-215D1	2.9375													
3	UC215-300D1	3.0000													
80	UC216D1	80	140	82.6	35	2.5	33.3	49.3	12	M10×1.25	98.1	9.5			
3 ¹ / ₁₆	UC216-301D1	3.0625													
3 ¹ / ₈	UC216-302D1	3.1250	5.5118	3.2520	1.3780	0.098	1.311	1.941	0.472	³ / ₈ -24UNF	3.8622	0.374			
3 ³ / ₁₆	UC216-303D1	3.1875													

Note (1) These numbers indicate relubricatable type. If maintenance free type is needed, please order without suffix "D1".

Basic load ratings	N lbf dynamic C _r	kg lb static C _{0r}	Mass	
				kg
	35 000	23 200	0.78	2.03
	7 900	5 200	1.92	4.26
	1 810	1 810	1.81	4.09
	1 690	1 690	1.69	3.73
	43 500	29 200	1.04	2.71
	2 770	2 770	2.71	6.00
	9 750	6 550	2.60	5.73
	2 460	2 460	2.46	5.49
	2 340	2 340	2.34	5.25
	52 500	36 000	1.46	3.26
	3 660	3 660	3.66	8.17
	3 500	3 500	3.50	7.73
	3 330	3 330	3.33	7.33
	3 170	3 170	3.17	7.00
	57 500	40 000	1.86	4.09
	12 900	9 000	4.26	9.45
	62 000	44 000	2.10	4.65
	14 000	9 900	5.09	11.25
	4 870	4 870	4.87	10.75
	4 650	4 650	4.65	10.35
	66 000	49 500	2.34	5.15
	5 730	5 730	5.73	12.65
	5 490	5 490	5.49	12.15
	5 250	5 250	5.25	11.70
	4 980	4 980	4.98	11.00
	72 500	53 000	2.78	6.15
	16 300	11 900	6.57	14.55
	6 280	6 280	6.28	13.95
	6 000	6 000	6.00	13.35

UC2

Ball bearings Set screw type



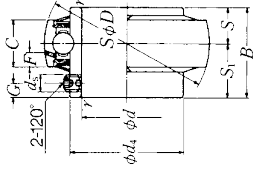
Shaft dia. mm inch	Bearing ⁽¹⁾ number	Nominal dimensions										
		d	D	B	C	r min.	S	S ₁	G	d _s	d ₁	F
85	UC217D1	85	150	85.7	36	2.5	34.1	51.6	12	M12X1.5	106.4	10.1
3 1/8	UC217-304D1	3.2500										
3 5/16	UC217-305D1	3.3125	5.9055	3.3740	1.4173	0.098	1.343	2.031	0.472	1/2-20UNF	4.1890	0.398
3 7/16	UC217-307D1	3.4375										
90	UC218D1	90	160	96	37	2.5	39.7	56.3	12	M12X1.5	111.6	9.8
3 1/2	UC218-308D1	3.5000	6.2992	3.7795	1.4567	0.098	1.563	2.217	0.472	1/2-20UNF	4.3937	0.386

Note ⁽¹⁾ These numbers indicate relubricatable type. If maintenance free type is needed, please order without suffix "D1".

Basic load ratings		Mass	
N lbf	kg lb	dynamic C _r	static C _{0r}
83 500	64 000	3.54	7.92
18 700	14 300	7.60	6.97
96 000	71 500	4.40	9.88
21 600	16 100		

UC3

Ball bearings Set screw type



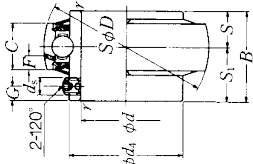
Shaft dia. mm inch	Bearing (1) number	Nominal dimensions										
		d	D	B	C	r min.	S	S ₁	G	d _s	d ₄	F
25	UC305D1	25	62	38	20	1.5	15	23	6	M6×0.75	36.8	5.0
	UC305-013D1	0.8125										
	UC305-014D1	0.8750										
	UC305-015D1	0.9375	2.4409	1.4961	0.7874	0.059	0.591	0.906	0.236	1/4-28UNF	1.4488	0.197
1	UC305-100D1	1.0000										
30	UC306D1	30	72	43	23	1.5	17	26	6	M6×0.75	44.9	5.9
	UC306-101D1	1.0625										
	UC306-102D1	1.1250	2.8346	1.6929	0.9055	0.059	0.669	1.024	0.236	1/4-28UNF	1.7677	0.232
	UC306-103D1	1.1875										
35	UC307D1	35	80	48	25	2	19	29	8	M8×1	49.4	6.8
	UC307-104D1	1.2500										
	UC307-105D1	1.3125										
	UC307-106D1	1.3750	3.1496	1.8898	0.9843	0.079	0.748	1.142	0.315	5/16-24UNF	1.9449	0.268
	UC307-107D1	1.4375										
40	UC308D1	40	90	52	27	2	19	33	10	M10×1.25	56	7.4
	UC308-108D1	1.5000										
	UC308-109D1	1.5625	3.5433	2.0472	1.0630	0.079	0.748	1.299	0.394	3/8-24UNF	2.2047	0.291
45	UC309D1	45	100	57	29	2	22	35	10	M10×1.25	63.5	7.4
	UC309-110D1	1.6250										
	UC309-111D1	1.6875	3.9370	2.2441	1.1417	0.079	0.866	1.378	0.394	3/8-24UNF	2.5000	0.291
	UC309-112D1	1.7500										
50	UC310D1	50	110	61	32	2.5	22	39	12	M12×1.5	70.6	8.1
	UC310-113D1	1.8125										
	UC310-114D1	1.8750	4.3307	2.4016	1.2598	0.098	0.866	1.535	0.472	1/2-20UNF	2.7795	0.319
	UC310-115D1	1.9375	1.9375									

Note (1) These numbers indicate relubricatable type. If maintenance free type is needed, please order without suffix "D1".

Basic load ratings	N lbf dynamic C _r	kg lb static C _{0r}	Mass	
				kg
	21 200	10 900	0.35	0.88
	4 750	2 460	0.84	0.79
	26 700	15 000	0.56	1.34
	6 000	3 400	1.28	1.23
	33 500	19 100	0.70	1.70
	7 500	4 300	1.63	1.57
	40 500	24 000	0.96	2.23
	9 150	5 400	2.14	2.14
	53 000	32 000	1.28	3.06
	11 900	7 200	2.98	3.84
	62 000	38 500	1.68	3.95
	13 900	8 600	3.84	3.70

UC3

Ball bearings Set screw type

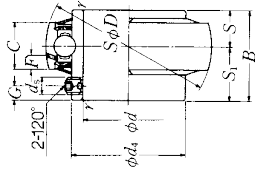


Shaft dia. mm inch	Bearing (1) number	Nominal dimensions										Basic load ratings		Mass		
		d	D	B	C	r min.	S	S ₁	G	d _s	d ₁	F	d ₁ dynamic C _r	static C _{0r}	kg	lb
55	UC311D1	55	120	66	34	2.5	25	41	12	M12X1.5	76.6	8.5	71 500	45 000	2.08	4.96
2	UC311-200D1	2.0000														
2 ¹ / ₁₆	UC311-201D1	2.0625	4.7244	2.5984	1.3886	0.098	0.984	1.614	0.472	½-20UNF	3.0157	0.335	16 100	10 100	4.81	4.67
2 ¹ / ₈	UC311-202D1	2.1250														
2 ³ / ₁₆	UC311-203D1	2.1875													4.50	
60	UC312D1	60	130	71	36	2.5	26	45	12	M12X1.5	82.7	9.0	82 000	52 000	2.60	6.06
2 ¹ / ₄	UC312-204D1	2.2500														
2 ³ / ₁₆	UC312-205D1	2.3125	5.1181	2.7953	1.4173	0.098	1.024	1.772	0.472	½-20UNF	3.2559	0.354	18 400	11 700	5.89	5.68
2 ⁷ / ₁₆	UC312-206D1	2.3750														
2 ⁷ / ₈	UC312-207D1	2.4375													5.51	
65	UC313D1	65	140	75	39	2.5	30	45	12	M12X1.5	88.2	10.1	92 500	60 000	3.25	7.36
2 ¹ / ₂	UC313-208D1	2.5000	5.5118	2.9528	1.5354	0.098	1.181	1.772	0.472	½-20UNF	3.4724	0.398	20 800	13 400	7.14	
2 ⁹ / ₁₆	UC313-209D1	2.5625														
70	UC314D1	70	150	78	41	2.5	33	45	12	M12X1.5	94.8	10.5	104 000	68 000	3.86	9.06
2 ⁵ / ₈	UC314-210D1	2.6250														
2 ¹¹ / ₁₆	UC314-211D1	2.6875	5.9055	3.0709	1.6142	0.098	1.299	1.772	0.472	½-20UNF	3.7923	0.413	23 400	15 300	8.82	8.60
2 ³ / ₄	UC314-212D1	2.7500														
75	UC315D1	75	160	82	43	2.5	32	50	14	M14X1.5	101.3	11.0	113 000	77 000	4.70	11.0
2 ⁹ / ₁₆	UC315-213D1	2.8125														
2 ⁷ / ₈	UC315-214D1	2.8750	6.2992	3.2283	1.6929	0.098	1.260	1.969	0.551	⅝-18UNF	3.9882	0.433	25 500	17 400	10.7	10.5
2 ¹⁵ / ₁₆	UC315-215D1	2.9375														
3	UC315-300D1	3.0000													10.2	
80	UC316D1	80	170	86	45	2.5	34	52	14	M14X1.5	107.9	11.4	123 000	86 500	5.60	12.6
3 ¹ / ₁₆	UC316-301D1	3.0625														
3 ¹ / ₈	UC316-302D1	3.1250	6.6929	3.3858	1.7717	0.098	1.339	2.047	0.551	⅝-18UNF	4.2480	0.449	27 600	19 500	12.3	12.1
3 ⁹ / ₁₆	UC316-303D1	3.1875														

Note (1) These numbers indicate relubricatable type. If maintenance free type is needed, please order without suffix "D1".

UC3

Ball bearings Set screw type



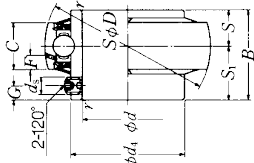
Shaft dia. mm inch	Bearing (1) number	Nominal dimensions										
		d	D	B	C	r	S	S ₁	G	d ₁	F	
85	UC317D1	85	180	96	47	3	40	56	16	M16×1.5	114.4	12.0
3 1/4	UC317-304D1	3.2500										
3 5/16	UC317-305D1	3.3125	7.0866	3.7795	1.8504	0.118	1.575	2.205	0.630	5/8-18UNF	4.5039	0.472
3 7/16	UC317-307D1	3.4375										
90	UC318D1	90	190	96	49	3	40	56	16	M16×1.5	120.9	12.3
3 7/16	UC318-307D1	3.4375	7.4803	3.7795	1.9291	0.118	1.575	2.205	0.630	5/8-18UNF	4.7598	0.484
3 1/2	UC318-308D1	3.5000										
95	UC319D1	95	200	103	51	3	41	62	16	M16×1.5	127.5	12.8
3 5/8	UC319-310D1	3.6250										
3 9/16	UC319-311D1	3.6875	7.8740	4.0551	2.0079	0.118	1.614	2.441	0.630	5/8-18UNF	5.0197	0.504
3 3/4	UC319-312D1	3.7500										
100	UC320D1	100	215	108	55	3	42	66	18	M18×1.5	135.6	13.5
3 5/8	UC320-313D1	3.8125										
3 7/8	UC320-314D1	3.8750	8.4646	4.2520	2.1654	0.118	1.654	2.598	0.709	5/8-18UNF	5.3386	0.531
3 9/16	UC320-315D1	3.9375										
4	UC320-400D1	4.0000										
105	UC321D1	105	225	112	57	3	44	68	18	M18×1.5	142.1	13.9
110	UC322D1	110	240	117	59	3	46	71	18	M18×1.5	151.7	13.9
120	UC324D1	120	260	126	63	3	51	75	18	M18×1.5	165.2	16.0
130	UC326D1	130	280	135	67	4	54	81	20	M20×1.5	178.3	16.9
140	UC328D1	140	300	145	71	4	59	86	20	M20×1.5	190.4	17.7

Note (1) These numbers indicate relubricatable type. If maintenance free type is needed, please order without suffix "D1".

Basic load ratings	N dynamic C _r	N static C _{0r}	Mass	
				kg
	133 000	97 000	6.70	
	29 800	21 800	15.2	
			14.9	
			14.2	
	143 000	107 000	7.60	
	32 000	24 100	17.3	
			16.9	
	153 000	119 000	8.70	
	34 500	26 600	19.9	
			19.5	
			19.1	
	173 000	141 000	10.8	
	39 000	31 500	24.7	
			24.2	
			23.8	
			23.4	
	184 000	153 000	12.2	
	205 000	179 000	14.3	
	207 000	185 000	18.5	
	229 000	214 000	23.0	
	253 000	246 000	28.5	

UCX

Ball bearings Set screw type



Shaft dia. mm inch	Bearing (1) number	Nominal dimensions										
		d	D	B	C	r min.	S	S ₁	G	d _s	d _i	F
25 1 ⁹ / ₁₆	UCX05D1	25	62	38.1	19	1	15.9	22.2	5	M6×0.75	40.8	4.6
	UCX05-013D1	0.8125										
7/8	UCX05-014D1	0.8750	2.4409	1.5000	0.7480	0.039	0.626	0.874	0.197	1/4-28UNF	1.6063	0.181
1 ⁵ / ₁₆	UCX05-015D1	0.9375										
1	UCX05-100D1	1.0000										
30 1 ¹ / ₈	UCX06D1	30	72	42.9	20	1	17.5	25.4	6	M8×1	46.8	4.6
	UCX06-101D1	1.0625										
1 ¹ / ₈	UCX06-102D1	1.1250	2.8346	1.6890	0.7874	0.039	0.689	1.000	0.236	5/16-24UNF	1.8425	0.181
1 ³ / ₁₆	UCX06-103D1	1.1875										
35 1 ⁹ / ₁₆	UCX07D1	35	80	49.2	21	1.5	19	30.2	8	M8×1	53	4.5
	UCX07-105D1	1.3125										
1 ³ / ₈	UCX07-106D1	1.3750	3.1496	1.9370	0.8268	0.059	0.748	1.189	0.315	5/16-24UNF	2.0866	0.177
1 ⁷ / ₁₆	UCX07-107D1	1.4375										
40 1 ¹ / ₂	UCX08D1	40	85	49.2	22	1.5	19	30.2	8	M8×1	57.5	4.9
	UCX08-108D1	1.5000	3.3465	1.9370	0.8661	0.059	0.748	1.189	0.315	5/16-24UNF	2.2638	0.193
1 ⁹ / ₁₆	UCX08-109D1	1.5625										
45 1 ⁵ / ₈	UCX09D1	45	90	51.6	24	1.5	19	32.6	9	M10×1.25	62.4	5.9
	UCX09-110D1	1.6250										
1 ¹¹ / ₁₆	UCX09-111D1	1.6875	3.5433	2.0315	0.9449	0.059	0.748	1.283	0.354	3/8-24UNF	2.4567	0.232
1 ³ / ₄	UCX09-112D1	1.7500										
50 1 ¹ / ₂	UCX10D1	50	100	55.6	25	1.5	22.2	33.4	9	M10×1.25	69	6.0
	UCX10-114D1	1.8750	3.9370	2.1890	0.9843	0.059	0.874	1.315	0.354	3/8-24UNF	2.7165	0.236
1 ⁹ / ₁₆	UCX10-115D1	1.9375										
55 2 ¹ / ₁₆	UCX11D1	55	110	65.1	27	2	25.4	39.7	10	M10×1.25	77	6.2
	UCX11-201D1	2.0625										
2 ³ / ₁₆	UCX11-202D1	2.1250	4.3307	2.5630	1.0630	0.079	1.000	1.563	0.394	3/8-24UNF	3.0315	0.244
2 ³ / ₁₆	UCX11-203D1	2.1875										
60 2 ³ / ₈	UCX12D1	60	120	65.1	32	2	25.4	39.7	10	M10×1.25	82.5	8.7
	UCX12-206D1	2.3750	4.7244	2.5630	1.2598	0.079	1.000	1.563	0.394	3/8-24UNF	3.2480	0.343
2 ⁷ / ₁₆	UCX12-207D1	2.4375										

Note (1) These numbers indicate relubricatable type. If maintenance free type is needed, please order without suffix "D1".

Basic load ratings	Mass	
	N lbf	kg lb
dynamic C _r	19 500	11 300
static C _{0r}	4 400	2 540
	25 700	15 300
	5 750	3 450
	29 100	17 800
	6 550	4 000
	32 500	20 400
	7 350	4 600
	35 000	23 200
	7 900	5 200
	43 500	29 200
	9 750	6 550
	52 500	36 000
	11 800	8 150
	57 500	40 000
	12 900	9 000
	1.72	1.22
	4.43	3.15
	4.30	3.04
	4.12	
	2.10	2.10
	4.96	4.96
	4.81	4.81