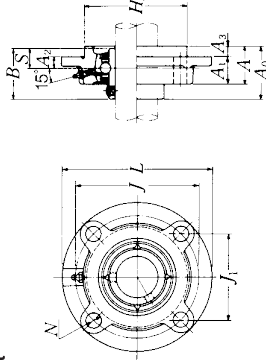


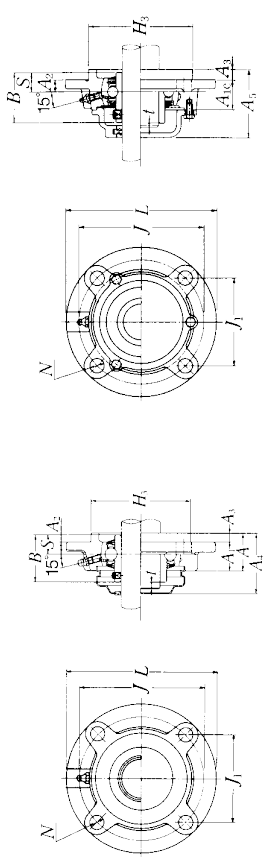
UCFC2

Round flanged unit, cast housing with spigot joint
Set screw type



Shaft dia. mm inch	Unit number (1)	Nominal dimensions mm inch											Bolt size mm inch		
		L	J	(J)	A ₂	A ₃	N	A ₁	A	H ₃	A ₀	B	S	mm	inch
50	UCFC210D1	165	138	97.6	10	12	28	40	110	54.6	51.6	19	M14		
	UCFC210-113D1														
	UCFC210-114D1	6 1/2	5 7/8	3 27/32	29/64	5/8	1 3/8	4 37/64	4.3307	2 5/32	2.0915	0.7448	1/2		
	UCFC210-115D1														
2	UCFC210-200D1														
55	UCFC211D1	185	150	106.1	13	19	31	43	125	58.4	55.6	22.2	M16		
	UCFC211-200D1														
	UCFC211-201D1														
	UCFC211-202D1	7 3/32	5 29/32	4 11/64	33/64	3/4	1 7/32	1 11/16	4.9213	2 19/64	2.1890	0.874	5/8		
	UCFC211-203D1														
60	UCFC212D1	195	160	113.1	17	19	36	48	135	68.7	65.1	25.4	M16		
	UCFC212-204D1														
	UCFC212-205D1														
	UCFC212-206D1	7 11/16	6 19/64	4 29/64	43/64	3/4	1 13/32	1 17/32	5.3150	2 15/64	2.5630	1.000	5/8		
	UCFC212-207D1														
65	UCFC213D1	205	170	120.2	16	19	43	50	145	69.7	65.1	25.4	M16		
	UCFC213-208D1														
	UCFC213-209D1	8 1/16	6 11/16	4 37/64	5/8	3/4	1 13/32	1 17/32	5.7087	2 3/32	2.5630	1.000	5/8		
70	UCFC214D1	215	177	125.2	17	19	44	54	150	75.4	74.6	30.2	M16		
	UCFC214-210D1														
	UCFC214-211D1	8 15/32	6 31/32	4 59/64	43/64	3/4	1 37/64	2 1/8	5.9055	2 31/32	2.9370	1.189	5/8		
	UCFC214-212D1														
75	UCFC215D1	220	184	130.1	18	19	46	56	160	78.5	77.8	33.3	M16		
	UCFC215-213D1														
	UCFC215-214D1	8 31/32	7 1/4	5 1/8	45/64	3/4	1 57/64	2 3/8	6.2992	3 3/32	3.0630	1.311	5/8		
	UCFC215-215D1														
3	UCFC215-300D1														
80	UCFC216D1	240	200	141.4	18	23	42	58	170	83.3	82.6	33.3	M20		
	UCFC216-301D1														
	UCFC216-302D1	9 7/16	7 7/8	5 5/16	45/64	29/32	1 29/32	2 9/32	6.6929	3 9/32	3.2520	1.311	3/4		
	UCFC216-303D1														

Note (1) These numbers indicate relubricatable type. If maintenance free type is needed, please order without suffix "D1".
Remarks Please refer to page A21 for size of grease fitting.



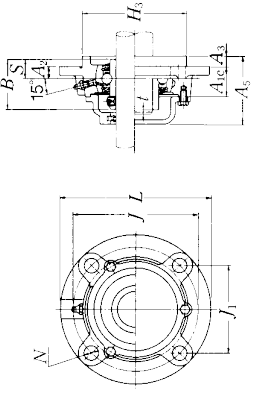
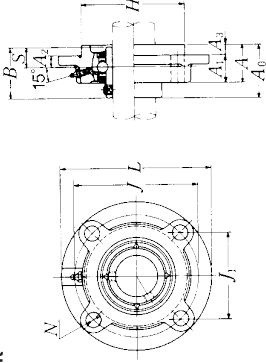
Pressed steel dust cover type
Open end Z-UCFC...D1
Closed end ZM-UCFC...D1

Cast dust cover type
Open end C-UCFC...D1
Closed end CM-UCFC...D1

Bearing number	Housing number	Unit number (1) pressed steel dust cover type	Unit number (1) cast dust cover type	Nominal dimensions mm inch			Mass of unit kg lb			
				t max.	A ₄	A ₅	UCFC	Z(M)	C(M)	
UC210D1	FC210D1	Z(ZM)-UCFC210D1	C(CM)-UCFC210D1	3	60	29	72	3.0	3.1	3.6
	FC210D1	Z(ZM)-UCFC210-113D1	C(CM)-UCFC210-113D1							
	FC210D1	Z(ZM)-UCFC210-114D1	C(CM)-UCFC210-114D1	1/8	2 1/2	1 3/8	2 35/64	6.6	6.8	7.9
	FC210D1	Z(ZM)-UCFC210-115D1	C(CM)-UCFC210-115D1							
	FC210-200D1	—	C(CM)-UCFC210-200D1							
UC211D1	FC211D1	Z(ZM)-UCFC211D1	C(CM)-UCFC211D1	4	64	32.5	75	4.1	4.2	4.8
	FC211D1	Z(ZM)-UCFC211-200D1	C(CM)-UCFC211-200D1							
	FC211D1	Z(ZM)-UCFC211-201D1	C(CM)-UCFC211-201D1	5/32	2 1/2	1 3/8	2 61/64	9.0	9.3	11
	FC211D1	Z(ZM)-UCFC211-202D1	C(CM)-UCFC211-202D1							
	FC211D1	Z(ZM)-UCFC211-203D1	C(CM)-UCFC211-203D1							
UC212D1	FC212D1	Z(ZM)-UCFC212D1	C(CM)-UCFC212D1	4	74	38	86	4.9	5.1	5.9
	FC212D1	Z(ZM)-UCFC212-204D1	C(CM)-UCFC212-204D1							
	FC212D1	Z(ZM)-UCFC212-205D1	C(CM)-UCFC212-205D1	5/32	2 29/32	1 1/2	3 35/64	11	11	13
	FC212D1	Z(ZM)-UCFC212-206D1	C(CM)-UCFC212-206D1							
	FC212-207D1	—	C(CM)-UCFC212-207D1							
UC213D1	FC213D1	Z(ZM)-UCFC213D1	C(CM)-UCFC213D1	4	76	38	89.5	5.8	6.0	6.8
	FC213D1	Z(ZM)-UCFC213-208D1	C(CM)-UCFC213-208D1	5/32	3	1 1/2	3 7/32	13	13	15
	FC213D1	Z(ZM)-UCFC213-209D1	C(CM)-UCFC213-209D1							
UC214D1	FC214D1	—	C(CM)-UCFC214D1	4	—	39.5	98	7.0	—	8.0
	FC214D1	—	C(CM)-UCFC214-210D1							
	FC214D1	—	C(CM)-UCFC214-211D1	5/32	—	1 1/8	3 5/64	15	—	18
	FC214-212D1	—	C(CM)-UCFC214-212D1							
UC215D1	FC215D1	—	C(CM)-UCFC215D1	4	—	43	102	7.4	—	8.8
	FC215D1	—	C(CM)-UCFC215-213D1							
	FC215D1	—	C(CM)-UCFC215-214D1	5/32	—	1 1/16	4 1/64	16	—	19
	FC215D1	—	C(CM)-UCFC215-215D1							
	FC215-300D1	—	C(CM)-UCFC215-300D1							
UC216D1	FC216D1	—	C(CM)-UCFC216D1	4	—	43	106	9.1	—	10
	FC216D1	—	C(CM)-UCFC216-301D1							
	FC216D1	—	C(CM)-UCFC216-302D1	5/32	—	1 1/16	4 11/64	20	—	22
	FC216-303D1	—	C(CM)-UCFC216-303D1							

UCFC2

Round flanged unit, cast housing with spigot joint Set screw type



Pressed steel dust cover type
Open end Z-UCFC...D1
Closed end ZM-UCFC...D1

Cast dust cover type
Open end C-UCFC...D1
Closed end CM-UCFC...D1

Shaft dia. mm inch	Unit number (1)	Nominal dimensions mm inch											Bolt size mm inch			
		L	J	(J)	A ₂	A ₃	N	A ₄	A ₁	A	H ₃	A ₀	B	S	B	S
85	UCFC217D1	250	208	147.1	18	23	18	45	63	180	87.6	85.7	34.1	M20		
3/4	UCFC217-304D1															
3/16	UCFC217-305D1	9 7/32	8 3/16	5 5/16	45/64	29/32	49/64	1 5/32	2 1/16	7.0866	3 39/64	3.3740	1.343	3/4		
3/16	UCFC217-307D1															
90	UCFC218D1	265	220	155.6	22	23	18	50	68	190	96.3	96	39.7	M20		
3/2	UCFC218-308D1	10 7/16	8 9/32	6 1/8	55/64	29/32	49/64	1 9/32	2 9/16	7.4803	3 9/16	3.7795	1.563	3/4		

Note (1) These numbers indicate relubricatable type. If maintenance free type is needed, please order without suffix "D1".
Remarks Please refer to page A21 for size of grease fitting.

Bearing number	Housing number	Unit number (1) pressed steel dust cover type	Unit number (1) cast dust cover type	Nominal dimensions				Mass of unit		
				t max.	A ₄	A _{1C}	A ₅	kg	lb	
UC217D1	FC217D1	—	C(CM)-UCFC217D1	5	—	45.5	114	11	—	12
UC217-304D1	FC217D1	—	C(CM)-UCFC217-304D1	19/64	—	1 9/16	4 9/16	24	—	26
UC217-305D1	FC217D1	—	C(CM)-UCFC217-305D1							
UC217-307D1	FC217D1	—	C(CM)-UCFC217-307D1							
UC218D1	FC218D1	—	C(CM)-UCFC218D1	5	—	50	122	13	—	15
UC218-308D1	FC218D1	—	C(CM)-UCFC218-308D1	19/64	—	1 9/16	4 9/16	29	—	33