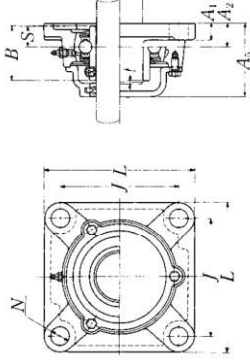
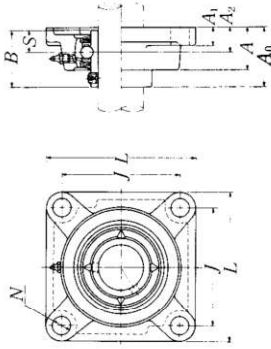


# UCF3

Square flanged unit, cast housing  
Set screw type



Cast dust cover type  
Open end C-UCF...D1  
Closed end CM-UCF...D1

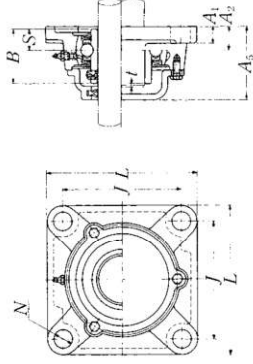
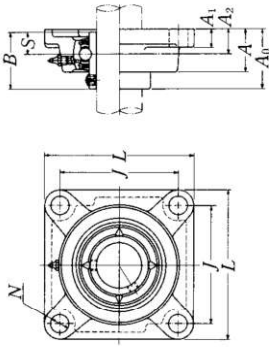
Shaft dia. mm inch	Unit number (*)	Nominal dimensions mm inch											Bolt size mm inch	
		L	J	A <sub>2</sub>	A <sub>1</sub>	A	N	A <sub>0</sub>	B	S	Bolt size	mm	inch	
25 $\frac{19}{16}$ $\frac{7}{8}$ $\frac{15}{16}$ 1	UCF305D1	110	80	16	13	29	16	39	38	15	M14			
	UCF305-013D1													
	UCF305-014D1	4 $\frac{11}{32}$	3 $\frac{5}{32}$	$\frac{5}{8}$	$\frac{1}{2}$	1 $\frac{1}{32}$	$\frac{5}{8}$	1 $\frac{17}{32}$	1.4961	0.591	$\frac{1}{2}$			
	UCF305-015D1													
	UCF305-100D1													
30 $\frac{1}{4}$ $\frac{1}{8}$ $\frac{3}{16}$ 1 $\frac{3}{16}$	UCF306D1	125	95	18	15	32	16	44	43	17	M14			
	UCF306-101D1													
	UCF306-102D1	4 $\frac{29}{32}$	3 $\frac{47}{64}$	$\frac{45}{64}$	$\frac{19}{32}$	1 $\frac{1}{4}$	$\frac{5}{8}$	1 $\frac{7}{64}$	1.6929	0.669	$\frac{1}{2}$			
	UCF306-103D1													
	UCF307D1	135	100	20	16	36	19	49	48	19	M16			
35 $\frac{1}{4}$ $\frac{5}{16}$ $\frac{3}{8}$ 1 $\frac{1}{16}$	UCF307-104D1													
	UCF307-105D1	5 $\frac{5}{16}$	3 $\frac{15}{16}$	$\frac{29}{32}$	$\frac{5}{8}$	1 $\frac{13}{32}$	$\frac{3}{4}$	1 $\frac{9}{64}$	1.8698	0.748	$\frac{5}{8}$			
	UCF307-106D1													
	UCF307-107D1													
	UCF308D1	150	112	23	17	40	19	56	52	19	M16			
40 $\frac{1}{2}$ $\frac{1}{8}$ $\frac{3}{16}$ 1 $\frac{1}{16}$	UCF308-108D1	5 $\frac{29}{32}$	4 $\frac{13}{32}$	$\frac{29}{32}$	$\frac{21}{32}$	1 $\frac{9}{16}$	$\frac{3}{4}$	2 $\frac{9}{64}$	2.0472	0.748	$\frac{5}{8}$			
	UCF308-109D1													
	UCF309D1	160	125	25	18	44	19	60	57	22	M16			
	UCF309-110D1													
	UCF309-111D1	6 $\frac{5}{16}$	4 $\frac{59}{64}$	$\frac{93}{64}$	$\frac{23}{32}$	1 $\frac{23}{32}$	$\frac{3}{4}$	2 $\frac{29}{64}$	2.2441	0.866	$\frac{5}{8}$			
45 $\frac{1}{4}$ $\frac{1}{8}$ $\frac{3}{16}$ 1 $\frac{1}{16}$	UCF309-112D1													
	UCF310D1	175	132	28	19	48	23	67	61	22	M20			
	UCF310-113D1													
	UCF310-114D1	6 $\frac{7}{8}$	5 $\frac{13}{64}$	1 $\frac{7}{64}$	$\frac{3}{4}$	1 $\frac{1}{8}$	$\frac{29}{32}$	2 $\frac{1}{64}$	2.4016	0.866	$\frac{3}{4}$			
	UCF310-115D1													
55 2 $\frac{2}{16}$ $\frac{2}{16}$ 2 $\frac{3}{16}$	UCF311D1	185	140	30	20	52	23	71	66	25	M20			
	UCF311-200D1													
	UCF311-201D1	7 $\frac{9}{32}$	5 $\frac{33}{64}$	1 $\frac{3}{16}$	$\frac{25}{32}$	2 $\frac{1}{16}$	$\frac{29}{32}$	2 $\frac{5}{64}$	2.5984	0.984	$\frac{3}{4}$			
	UCF311-202D1													
	UCF311-203D1													

Note (\*) These numbers indicate relubricatable type. If maintenance free type is needed, please order without suffix "D1".  
Remarks Please refer to page A21 for size of grease fitting.

Bearing number	Housing number	Unit number (*) cast dust cover type	Nominal dimensions		Mass of unit	
			t mm max.	A <sub>5</sub> inch	UCF kg lb	C(CM) kg lb
UC305D1	F305D1	C(CM)-UCF305D1	2	56	1.1	1.4
UC305-013D1	F305D1	C(CM)-UCF305-013D1				
UC305-014D1	F305D1	C(CM)-UCF305-014D1	$\frac{5}{64}$	2 $\frac{1}{32}$	2.4	3.1
UC305-015D1	F305D1	C(CM)-UCF305-015D1				
UC305-100D1	F305D1	C(CM)-UCF305-100D1				
UC306D1	F306D1	C(CM)-UCF306D1	2	60	1.6	2.1
UC306-101D1	F306D1	C(CM)-UCF306-101D1				
UC306-102D1	F306D1	C(CM)-UCF306-102D1	$\frac{5}{64}$	2 $\frac{3}{64}$	3.5	4.6
UC306-103D1	F306D1	C(CM)-UCF306-103D1				
UC307D1	F307D1	C(CM)-UCF307D1	3	68	2.1	2.6
UC307-104D1	F307D1	C(CM)-UCF307-104D1				
UC307-105D1	F307D1	C(CM)-UCF307-105D1	$\frac{1}{8}$	2 $\frac{1}{16}$	4.6	5.7
UC307-106D1	F307D1	C(CM)-UCF307-106D1				
UC307-107D1	F307D1	C(CM)-UCF307-107D1				
UC308D1	F308D1	C(CM)-UCF308D1	3	76	2.7	3.4
UC308-108D1	F308D1	C(CM)-UCF308-108D1	$\frac{1}{8}$	3	6.0	7.5
UC308-109D1	F308D1	C(CM)-UCF308-109D1				
UC309D1	F309D1	C(CM)-UCF309D1	3	80	3.4	4.3
UC309-110D1	F309D1	C(CM)-UCF309-110D1				
UC309-111D1	F309D1	C(CM)-UCF309-111D1	$\frac{1}{8}$	3 $\frac{3}{32}$	7.5	9.5
UC309-112D1	F309D1	C(CM)-UCF309-112D1				
UC310D1	F310D1	C(CM)-UCF310D1	3	88	4.5	5.8
UC310-113D1	F310D1	C(CM)-UCF310-113D1	$\frac{1}{8}$	3 $\frac{5}{32}$	9.9	13
UC310-114D1	F310D1	C(CM)-UCF310-114D1				
UC310-115D1	F310D1	C(CM)-UCF310-115D1				
UC311D1	F311D1	C(CM)-UCF311D1	4	92	5.3	6.7
UC311-200D1	F311D1	C(CM)-UCF311-200D1				
UC311-201D1	F311D1	C(CM)-UCF311-201D1	$\frac{5}{32}$	3 $\frac{5}{8}$	12	15
UC311-202D1	F311D1	C(CM)-UCF311-202D1				
UC311-203D1	F311D1	C(CM)-UCF311-203D1				

# UCF3

Square flanged unit, cast housing  
Set screw type



Cast dust cover type  
Open end C-UCF...D1  
Closed end CM-UCF...D1

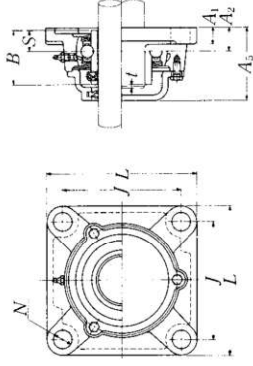
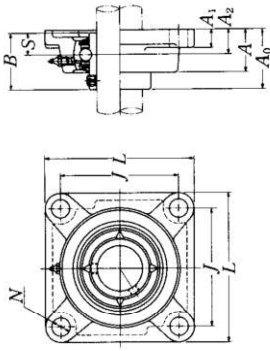
Shaft dia. mm inch	Unit number (1)	Nominal dimensions mm inch										Bolt size mm inch	
		L	J	A <sub>2</sub>	A <sub>1</sub>	A	N	A <sub>0</sub>	B	S			
60	UCF312D1	195	150	33	22	56	23	78	71	26	M20		
	UCF312-204D1												
	UCF312-205D1	7 <sup>11</sup> / <sub>16</sub>	5 <sup>29</sup> / <sub>32</sub>	1 <sup>19</sup> / <sub>64</sub>	7 <sup>1</sup> / <sub>8</sub>	2 <sup>1</sup> / <sub>32</sub>	29 <sup>29</sup> / <sub>32</sub>	3 <sup>3</sup> / <sub>64</sub>	2.7953	1.024	3 <sup>3</sup> / <sub>4</sub>		
	UCF312-206D1												
	UCF312-207D1												
65	UCF313D1	208	166	33	22	58	23	78	75	30	M20		
	UCF313-208D1	8 <sup>9</sup> / <sub>16</sub>	6 <sup>17</sup> / <sub>32</sub>	1 <sup>19</sup> / <sub>64</sub>	7 <sup>1</sup> / <sub>8</sub>	2 <sup>9</sup> / <sub>32</sub>	29 <sup>29</sup> / <sub>32</sub>	3 <sup>5</sup> / <sub>64</sub>	2.9528	1.181	9 <sup>9</sup> / <sub>4</sub>		
	UCF313-209D1												
70	UCF314D1	226	178	36	25	61	25	81	78	33	M22		
	UCF314-210D1												
	UCF314-211D1	8 <sup>29</sup> / <sub>32</sub>	6 <sup>1</sup> / <sub>64</sub>	1 <sup>27</sup> / <sub>64</sub>	3 <sup>1</sup> / <sub>32</sub>	2 <sup>13</sup> / <sub>32</sub>	63 <sup>63</sup> / <sub>64</sub>	3 <sup>3</sup> / <sub>16</sub>	3.0709	1.299	7 <sup>7</sup> / <sub>8</sub>		
	UCF314-212D1												
75	UCF315D1	236	184	39	25	66	25	89	82	32	M22		
	UCF315-213D1												
	UCF315-214D1	9 <sup>9</sup> / <sub>32</sub>	7 <sup>1</sup> / <sub>4</sub>	1 <sup>17</sup> / <sub>32</sub>	3 <sup>1</sup> / <sub>32</sub>	2 <sup>19</sup> / <sub>32</sub>	63 <sup>63</sup> / <sub>64</sub>	3 <sup>1</sup> / <sub>2</sub>	3.2283	1.260	7 <sup>7</sup> / <sub>8</sub>		
	UCF315-215D1												
	UCF315-300D1												
80	UCF316D1	250	196	38	27	68	31	90	86	34	M27		
	UCF316-301D1												
	UCF316-302D1	9 <sup>97</sup> / <sub>32</sub>	7 <sup>29</sup> / <sub>32</sub>	1 <sup>1</sup> / <sub>2</sub>	1 <sup>1</sup> / <sub>16</sub>	2 <sup>1</sup> / <sub>16</sub>	1 <sup>1</sup> / <sub>32</sub>	3 <sup>3</sup> / <sub>64</sub>	3.3858	1.339	1		
	UCF316-303D1												
85	UCF317D1	260	204	44	27	74	31	100	96	40	M27		
	UCF317-304D1												
	UCF317-305D1	10 <sup>1</sup> / <sub>4</sub>	8 <sup>1</sup> / <sub>32</sub>	1 <sup>47</sup> / <sub>64</sub>	1 <sup>1</sup> / <sub>16</sub>	2 <sup>29</sup> / <sub>32</sub>	1 <sup>1</sup> / <sub>32</sub>	3 <sup>5</sup> / <sub>16</sub>	3.7795	1.575	1		
	UCF317-307D1												
90	UCF318D1	280	216	44	30	76	35	100	96	40	M30		
	UCF318-307D1	11 <sup>1</sup> / <sub>32</sub>	8 <sup>1</sup> / <sub>2</sub>	1 <sup>47</sup> / <sub>64</sub>	1 <sup>1</sup> / <sub>16</sub>	3	1 <sup>1</sup> / <sub>8</sub>	3 <sup>5</sup> / <sub>16</sub>	3.7795	1.575	1 <sup>1</sup> / <sub>8</sub>		
	UCF318-308D1												

Note (1) These numbers indicate relubricatable type. If maintenance free type is needed, please order without suffix "D1".  
Remarks Please refer to page A21 for size of grease fitting.

Bearing number	Housing number	Unit number (1) cast dust cover type	Nominal dimensions		Mass of unit	
			mm inch	A <sub>5</sub>	kg lb	C(M)
UC312D1	F312D1	C(CM)-UCF3 12D1	4	100	6.3	7.8
UC312-204D1	F312D1	C(CM)-UCF3 12-204D1				
UC312-205D1	F312D1	C(CM)-UCF3 12-205D1	5 <sup>1</sup> / <sub>32</sub>	3 <sup>19</sup> / <sub>16</sub>	14	17
UC312-206D1	F312D1	C(CM)-UCF3 12-206D1				
UC312-207D1	F312D1	C(CM)-UCF3 12-207D1				
UC313D1	F313D1	C(CM)-UCF3 13D1	4	103	8.0	9.7
UC313-208D1	F313D1	C(CM)-UCF3 13-208D1	5 <sup>1</sup> / <sub>32</sub>	4 <sup>1</sup> / <sub>16</sub>	18	21
UC313-209D1	F313D1	C(CM)-UCF3 13-209D1				
UC314D1	F314D1	C(CM)-UCF3 14D1	4	106	9.4	11
UC314-210D1	F314D1	C(CM)-UCF3 14-210D1				
UC314-211D1	F314D1	C(CM)-UCF3 14-211D1	5 <sup>1</sup> / <sub>32</sub>	4 <sup>3</sup> / <sub>16</sub>	21	24
UC314-212D1	F314D1	C(CM)-UCF3 14-212D1				
UC315D1	F315D1	C(CM)-UCF3 15D1	4	114	11	13
UC315-213D1	F315D1	C(CM)-UCF3 15-213D1				
UC315-214D1	F315D1	C(CM)-UCF3 15-214D1	5 <sup>1</sup> / <sub>32</sub>	4 <sup>1</sup> / <sub>2</sub>	24	29
UC315-215D1	F315D1	C(CM)-UCF3 15-215D1				
UC315-300D1	F315D1	C(CM)-UCF3 15-300D1				
UC316D1	F316D1	C(CM)-UCF3 16D1	4	116	14	16
UC316-301D1	F316D1	C(CM)-UCF3 16-301D1				
UC316-302D1	F316D1	C(CM)-UCF3 16-302D1	5 <sup>1</sup> / <sub>32</sub>	4 <sup>9</sup> / <sub>16</sub>	31	35
UC316-303D1	F316D1	C(CM)-UCF3 16-303D1				
UC317D1	F317D1	C(CM)-UCF3 17D1	5	129	15	19
UC317-304D1	F317D1	C(CM)-UCF3 17-304D1	19 <sup>19</sup> / <sub>64</sub>	5 <sup>5</sup> / <sub>32</sub>	33	42
UC317-305D1	F317D1	C(CM)-UCF3 17-305D1				
UC317-307D1	F317D1	C(CM)-UCF3 17-307D1				
UC318D1	F318D1	C(CM)-UCF3 18D1	5	129	19	23
UC318-307D1	F318D1	C(CM)-UCF3 18-307D1	19 <sup>19</sup> / <sub>64</sub>	5 <sup>5</sup> / <sub>32</sub>	42	51
UC318-308D1	F318D1	C(CM)-UCF3 18-308D1				

# UCF3

Square flanged unit, cast housing  
Set screw type



Cast dust cover type  
Open end C-UCF...D1  
Closed end CM-UCF...D1

Shaft dia. mm inch	Unit number (1)	Nominal dimensions mm inch										Bolt size mm inch		
		L	J	A <sub>2</sub>	A <sub>1</sub>	A	N	A <sub>0</sub>	B	S				
95 3 7/8 3 1/8 3 3/4	UCF319D1	290	228	59	30	94	35	121	103	41			M30	
	UCF319-310D1													
	UCF319-311D1	11 13/32	8 31/32	2 7/64	1 3/16	3 11/16	1 3/8	4 9/64	4.0551	1.614			1 1/8	
	UCF319-312D1													
100 3 11/16 3 7/8 3 15/16 4	UCF320D1	310	242	59	32	94	38	125	108	42			M33	
	UCF320-313D1													
	UCF320-314D1	12 7/32	9 17/32	2 31/64	1 1/4	3 11/16	1 1/2	4 9/64	4.2520	1.654			1 1/4	
	UCF320-315D1													
105 110 120 130 140	UCF321D1	310	242	59	32	94	38	127	112	44			M33	
	UCF322D1	340	266	60	35	96	41	131	117	46			M36	
	UCF324D1	370	290	65	40	110	41	140	126	51			M36	
	UCF326D1	410	320	65	45	115	41	146	135	54			M36	
	UCF328D1	450	350	75	55	125	41	161	145	59			M36	

Note (1) These numbers indicate relubricatable type. If maintenance free type is needed, please order without suffix "D1".  
Remarks Please refer to page A21 for size of grease fitting.

Bearing number	Housing number	Unit number (1) cast dust cover type	Nominal dimensions mm inch		Mass of unit kg lb	
			t max.	A <sub>5</sub>	UCF	C(CM)
UC319D1 UC319-310D1 UC319-311D1 UC319-312D1	F319D1	C(CM)-UCF319D1	5	1.49	22	25
	F319D1	C(CM)-UCF319-310D1				
	F319D1	C(CM)-UCF319-311D1	19/64	5 7/8	49	55
	F319D1	C(CM)-UCF319-312D1				
UC320D1 UC320-313D1 UC320-314D1 UC320-315D1 UC320-400D1	F320D1	C(CM)-UCF320D1	5	1.54	27	32
	F320D1	C(CM)-UCF320-313D1				
	F320D1	C(CM)-UCF320-314D1	19/64	6 1/16	60	71
	F320D1	C(CM)-UCF320-315D1				
UC321D1 UC322D1 UC324D1 UC326D1 UC328D1	F321D1	C(CM)-UCF321D1	5	1.56	26	32
	F322D1	C(CM)-UCF322D1	5	1.60	34	40
	F324D1	C(CM)-UCF324D1	5	1.72	48	56
	F326D1	C(CM)-UCF326D1	6	1.78	63	73
	F328D1	C(CM)-UCF328D1	6	1.92	90	100