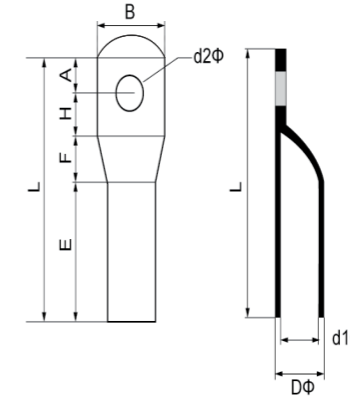


Permitted crimp in larger size for additional assurance on heavy duty load suitable for terminating cable size from 10 to 1000 SQ.MM.12-35kv.

Material: Copper tube (Cu) 99% up

Surface: Tin plated

Range size (mm²): 10-1000



Has provide machanical strength for heavy duty applications.Suitable use with cable size from 10 to 1000 SQ.MM.12-35KV.

Material: Copper tube (Cu) 99% up

Surface: Tin plated

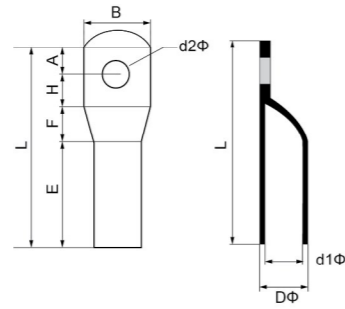
Range size (mm²): 10-1000

No.	Items	Dimension (mm)										Thickness (mm)	Weight (g)
		d2	d1	D	A	B	C	E	F	H	L		
14	TTL500-16	17.0	30.0	39.0	13.9	56.0	44.4	75.0	33.8	17.9	185.0	4.5	758.00
	TTL500-18	19.0	30.0	39.0	13.9	56.0	44.4	75.0	33.8	17.9	185.0	4.5	749.20
	TTL500-20	21.0	30.0	39.0	13.9	56.0	44.4	75.0	33.8	17.9	185.0	4.5	739.20
	TTL500-22	23.0	30.0	39.0	13.9	56.0	44.4	75.0	33.8	17.9	185.0	4.5	728.20
15	TTL630-12	13.0	34.5	44.0	16.5	63.5	44.4	80.0	37.8	20.5	199.2	4.75	1,004.70
	TTL630-14	15.0	34.5	44.0	16.5	63.5	44.4	80.0	37.8	20.5	199.2	4.75	997.10
	TTL630-16	17.0	34.5	44.0	16.5	63.5	44.4	80.0	37.8	20.5	199.2	4.75	988.70
	TTL630-18	19.0	34.5	44.0	16.5	63.5	44.4	80.0	37.8	20.5	199.2	4.75	979.30
	TTL630-20	21.0	34.5	44.0	16.5	63.5	44.4	80.0	37.8	20.5	199.2	4.75	968.70
16	TTL800-14	15.0	40.0	51.2	16.5	74.0	44.4	85.0	41.8	25.5	213.2	5.6	1,470.30
	TTL800-16	17.0	40.0	51.2	16.5	74.0	44.4	85.0	41.8	25.5	213.2	5.6	1,460.30
	TTL800-18	19.0	40.0	51.2	16.5	74.0	44.4	85.0	41.8	25.5	213.2	5.6	1,449.30
17	TTL1000-14	15.0	44.0	56.6	16.5	81.5	44.4	90.0	45.0	30.5	226.4	6.3	1,944.20
	TTL1000-16	17.0	44.0	56.6	16.5	81.5	44.4	90.0	45.0	30.5	226.4	6.3	1,933.20
	TTL1000-18	19.0	44.0	56.6	16.5	81.5	44.4	90.0	45.0	30.5	226.4	6.3	1,920.60
	TTL1000-20	21.0	44.0	56.6	16.5	81.5	44.4	90.0	45.0	30.5	226.4	6.3	1,906.60

INDENT

Item Size (mm ²)	Tool
1.5-10	LS-8
6-16	LS-16
10-25	LS-22
10-35	LS-38
> 35	YQK-300

No.	Items	Dimension (mm)										Thickness (mm)	Weight (g)
		d2	d1	D	A	B	C	E	F	H	L		
1	SCL10-6	6.2	4.6	6.2	7.5	12.0	21.5	7.4	9.5	45.9	0.8	5.15	134.60
	SCL10-8	8.2	4.6	6.2	7.5	12.0	21.5	7.4	9.5	45.9	0.8	5.12	131.00
	SCL10-10	10.2	4.6	6.2	7.5	14.0	21.5	7.4	9.5	45.9	0.8	5.09	127.60
2	SCL16-6	6.2	5.5	7.1	8.0	12.0	25.0	7.4	10.0	50.4	0.8	6.65	123.80
	SCL16-8	8.2	5.5	7.1	8.0	12.0	25.0	7.4	10.0	50.4	0.8	6.62	171.80
	SCL16-10	10.2	5.5	7.1	8.0	14.0	25.0	7.4	10.0	50.4	0.8	6.59	168.00
	SCL16-12	12.2	5.5	7.1	8.0	16.5	25.0	7.4	10.0	50.4	0.8	6.57	164.20
3	SCL25-6	6.2	7.0	8.8	8.5	15.0	28.5	7.4	10.5	54.9	0.9	10.47	160.20
	SCL25-8	8.2	7.0	8.8	8.5	15.0	28.5	7.4	10.5	54.9	0.9	10.33	200.30
	SCL25-10	10.2	7.0	8.8	8.5	15.0	28.5	7.4	10.5	54.9	0.9	10.30	196.30
4	SCL25-12	12.2	7.0	8.8	8.5	16.5	28.5	7.4	10.5	54.9	0.9	10.30	192.10
	SCL35-6	6.5	8.6	10.6	9.0	17.0	32.0	8.0	11.0	60.0	1.0	15.37	187.10
	SCL35-8	8.5	8.6	10.6	9.0	17.0	32.0	8.0	11.0	60.0	1.0	15.00	181.50
	SCL35-10	10.5	8.6	10.6	9.0	17.0	32.0	8.0	11.0	60.0	1.0	14.70	270.70
5	SCL35-12	12.5	8.6	10.6	9.0	17.0	32.0	8.0	11.0	60.0	1.0	14.70	266.50
	SCL50-8	8.5	10.0	12.4	12.7	19.0	35.0	10.9	14.7	73.3	1.2	26.10	261.50
	SCL50-10	10.5	10.0	12.4	12.7	19.0	35.0	10.9	14.7	73.3	1.2	25.50	256.10
	SCL50-12	12.5	10.0	12.4	12.7	19.0	35.0	10.9	14.7	73.3	1.2	25.30	250.10
6	SCL50-14	15.0	10.0	12.4	12.7	21.0	35.0	10.9	14.7	73.3	1.2	25.30	393.40
	SCL50-16	17.0	10.0	12.4	12.7	23.0	35.0	10.9	14.7	73.3	1.2	25.30	388.40
	SCL70-8	8.5	11.9	14.7	13.9	21.0	35.0	10.9	17.9	77.7	1.4	38.70	382.80
	SCL70-10	10.5	11.9	14.7	13.9	21.0	35.0	10.9	17.9	77.7	1.4	38.00	376.20
7	SCL70-12	12.5	11.9	14.7	13.9	21.0	35.0	10.9	17.9	77.7	1.4	37.00	369.00
	SCL70-14	15.0	11.9	14.7	13.9	21.0	35.0	10.9	17.9	77.7	1.4	35.70	592.40
	SCL70-16	17.0	11.9	14.7	13.9	24.0	35.0	10.9	17.9	77.7	1.4	35.70	586.20
	SCL95-8	8.5	14.2	17.4	13.9	25.5	38.0	15.8	17.9	85.6	1.6	58.32	579.00
8	SCL95-10	10.5	14.2	17.4	13.9	25.5	38.0	15.8	17.9	85.6	1.6	57.50	571.00
	SCL95-12	13.0	14.2	17.4	13.9	25.5	38.0	15.8	17.9	85.6	1.6	56.10	562.20
	SCL95-14	15.0	14.2	17.4	13.9	25.5	38.0	15.8	17.9	85.6	1.6	54.90	552.60
	SCL95-16	17.0	14.2	17.4	13.9	25.5	38.0	15.8	17.9	85.6	1.6	53.50	773.00
8	SCL120-8	8.5	15.8	19.4	13.9	28.0	40.0	18.8	17.9	90.6	1.8	77.73	766.00

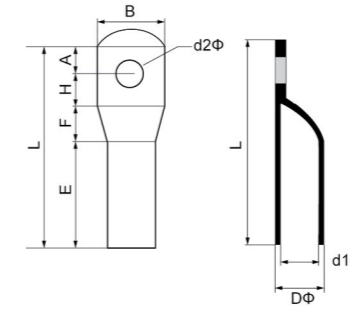


Has provide machanical strength for heavy duty applications.Suitable use with cable size from 10 to 1000 SQ.MM.12-35KV.

Material: Copper tube (Cu) 99% up

Surface: Tin plated

Range size (mm²): 10-1000



Has provide machanical strength for heavy duty applications.Suitable use with cable size from 10 to 1000 SQ.MM.12-35KV.

Material: Copper tube (Cu) 99% up

Surface: Tin plated

Range size (mm²): 10-1000

No.	Items	Dimension (mm)										Thickness (mm)	Weight (g)
		d2	d1	D	A	B	C	E	F	H	L		
8	SCL120-10	10.5	15.8	19.4	13.9	28.0	40.0	18.8	17.9	90.6	1.8	76.70	134.60
	SCL120-12	13.0	15.8	19.4	13.9	28.0	40.0	18.8	17.9	90.6	1.8	75.20	131.00
	SCL120-14	15.0	15.8	19.4	13.9	28.0	40.0	18.8	17.9	90.6	1.8	73.80	127.60
	SCL120-16	17.0	15.8	19.4	13.9	28.0	40.0	18.8	17.9	90.6	1.8	72.20	123.80
9	SCL150-10	10.5	17.4	21.2	13.9	30.5	50.0	19.8	17.9	101.6	1.9	100.10	171.80
	SCL150-12	13.0	17.4	21.2	13.9	30.5	50.0	19.8	17.9	101.6	1.9	98.60	168.00
	SCL150-14	15.0	17.4	21.2	13.9	30.5	50.0	19.8	17.9	101.6	1.9	97.10	164.20
	SCL150-16	17.0	17.4	21.2	13.9	30.5	50.0	19.8	17.9	101.6	1.9	95.40	160.20
10	SCL185-12	13.0	19.1	23.5	13.9	34.0	50.0	19.8	17.9	101.6	2.2	126.50	200.30
	SCL185-14	15.0	19.1	23.5	13.9	34.0	50.0	19.8	17.9	101.6	2.2	124.80	196.30
	SCL185-16	17.0	19.1	23.5	13.9	34.0	50.0	19.8	17.9	101.6	2.2	122.90	192.10
	SCL185-18	19.0	19.1	23.5	13.9	34.0	50.0	19.8	17.9	101.6	2.2	120.60	187.10
	SCL185-20	21.0	19.1	23.5	13.9	34.0	50.0	19.8	17.9	101.6	2.2	118.20	181.50
11	SCL240-12	13.0	21.9	26.5	15.9	38.5	56.0	24.8	19.9	116.6	2.3	174.10	270.70
	SCL240-14	15.0	21.9	26.5	15.9	38.5	56.0	24.8	19.9	116.6	2.3	172.30	266.50
	SCL240-16	17.0	21.9	26.5	15.9	38.5	56.0	24.8	19.9	116.6	2.3	170.30	261.50
	SCL240-18	19.0	21.9	26.5	15.9	38.5	56.0	24.8	19.9	116.6	2.3	168.00	256.10
	SCL240-20	21.0	21.9	26.5	15.9	38.5	56.0	24.8	19.9	116.6	2.3	165.40	250.10
12	SCL300-12	13.0	24.6	30.0	20.0	43.0	67.0	26.8	24.0	137.8	2.7	274.50	393.40
	SCL300-14	15.0	24.6	30.0	20.0	43.0	67.0	26.8	24.0	137.8	2.7	272.40	388.40
	SCL300-16	17.0	24.6	30.0	20.0	43.0	67.0	26.8	24.0	137.8	2.7	270.00	382.80
	SCL300-18	19.0	24.6	30.0	20.0	43.0	67.0	26.8	24.0	137.8	2.7	267.30	376.20
	SCL300-20	21.0	24.6	30.0	20.0	43.0	67.0	26.8	24.0	137.8	2.7	264.40	369.00
13	SCL400-12	13.0	29.9	36.5	23.0	53.0	67.0	26.8	27.0	143.8	3.3	427.90	592.40
	SCL400-14	15.0	29.9	36.5	23.0	53.0	67.0	26.8	27.0	143.8	3.3	425.30	586.20
	SCL400-16	17.0	29.9	36.5	23.0	53.0	67.0	26.8	27.0	143.8	3.3	422.50	579.00
	SCL400-18	19.0	29.9	36.5	23.0	53.0	67.0	26.8	27.0	143.8	3.3	419.20	571.00
	SCL400-20	21.0	29.9	36.5	23.0	53.0	67.0	26.8	27.0	143.8	3.3	415.50	562.20
	SCL400-22	23.0	29.9	36.5	23.0	53.0	67.0	26.8	27.0	143.8	3.3	411.50	552.60
14	SCL500-12	13.0	31.8	39.0	23.0	56.0	75.0	33.8	27.0	158.8	3.6	551.10	773.00
	SCL500-14	15.0	31.8	39.0	23.0	56.0	75.0	33.8	27.0	158.8	3.6	548.30	766.00

No.	Items	Dimension (mm)										Thickness (mm)	Weight (g)
		d2	d1	D	A	B	C	E	F	H	L		
14	SCL500-16	17.0	31.8	39.0	23.0	56.0	75.0	33.8	27.0	158.8	3.6	545.10	134.60
	SCL500-18	19.0	31.8	39.0	23.0	56.0	75.0	33.8	27.0	158.8	3.6	541.50	131.00
	SCL500-20	21.0	31.8	39.0	23.0	56.0	75.0	33.8	27.0	158.8	3.6	537.50	127.60
	SCL500-22	23.0	31.8	39.0	23.0	56.0	75.0	33.8	27.0	158.8	3.6	533.20	123.80
15	SCL630-12	13.0	36.0	44.0	26.0	63.5	80.0	37.8	30.0	173.8	4.0	759.50	171.80
	SCL630-14	15.0	36.0	44.0	26.0	63.5	80.0	37.8	30.0	173.8	4.0	756.40	168.00
	SCL630-16	17.0	36.0	44.0	26.0	63.5	80.0	37.8	30.0	173.8	4.0	752.80	164.20
	SCL630-18	19.0	36.0	44.0	26.0	63.5	80.0	37.8	30.0	173.8	4.0	748.80	160.20
	SCL630-20	21.0	36.0	44.0	26.0	63.5	80.0	37.8	30.0	173.8	4.0	744.40	200.30
16	SCL630-22	23.0	36.0	44.0	26.0	63.5	80.0	37.8	30.0	173.8	4.0	739.60	196.30
	SCL800-14	15.0	41.6	51.2	29.0	74.0	85.0	41.8	33.0	188.8	4.8	1,147.60	192.10
	SCL800-16	17.0	41.6	51.2	29.0	74.0	85.0	41.8	33.0	188.8	4.8	1,143.30	187.10
	SCL800-18	19.0	41.6	51.2	29.0	74.0	85.0	41.8	33.0	188.8	4.8	1,138.50	181.50
	SCL800-20	21.0	41.6	51.2	29.0	74.0	85.0	41.8	33.0	188.8	4.8	1,133.30	270.70
17	SCL1000-14	15.0	46.6	56.6	31.0	81.5	90.0	45.0	36.0	202.0	5.0	1,425.30	266.50
	SCL1000-16	17.0	46.6	56.6	31.0	81.5	90.0	45.0	36.0	202.0	5.0	1,420.80	261.50
	SCL1000-18	19.0	46.6	56.6	31.0	81.5	90.0	45.0	36.0	202.0	5.0	1,415.80	256.10
	SCL1000-20	21.0	46.6	56.6	31.0	81.5	90.0	45.0	36.0	202.0	5.0	1,410.30	250.10

INDENT

Item Size (mm ²)	Tool
1.5-10	LS-8
6-16	LS-16
10-25	LS-22
10-35	LS-38
> 35	YQK-300