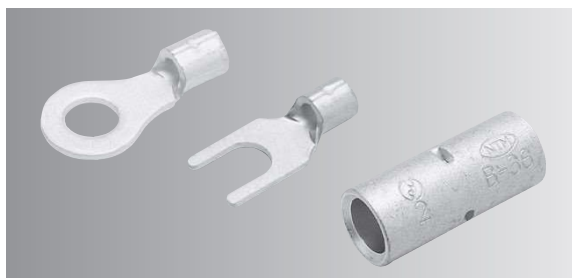


NON-INSULATED TERMINALS & SLEEVES

A



SPECIFICATIONS

- **MATERIAL** : Oxygen free copper strip/tube. (electro-tin-plating)
- **RATED CURRENT** : Please see amperage rating table for insulated wires. (Page 147)

STANDARDS

- Japanese Industrial Standards, JIS C2805 and JIS C2806.
- UL 486A (File No. E44245)
- CSA C22.2 (File No. LR-28418)



FOR SAFETY USE

Please observe the following points to prevent over-heat and possible fire.

- Copper wire only.
- Use our recommended tools.
- Use with specified wire range.

(NOTE)

APPLICABLE WIRE

- Wire range and performance ratings comply with JIS standard wire (IV, KIV, VSF).
- Inquire when solid wire is used for the 14 mm² or above terminals.

UL / CSA

To have UL/CSA listed or certified, use proper Nichifu crimp tool. To find correct tool, see our tool selection, page 145~146.

WIRE STRIP LENGTH

Strip length should be approx. 2mm longer than barrel length. (conductor should come out 1mm from both ends)

STRUCTURE OF OUR PART NUMBER

R 1.25 - 3

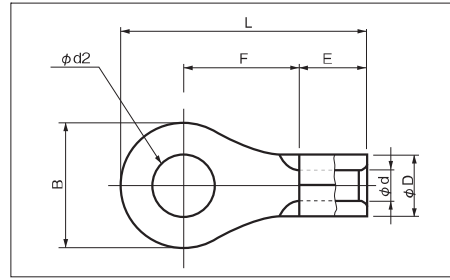
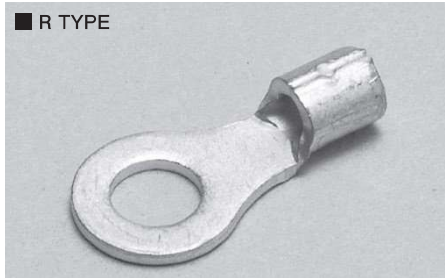
Shape of tongue	Nominal size	Stud size(mm)
R : RING	1.25 → 1.25mm ²	
RD : RING,DOUBLE STUD	2 → 2mm ²	
CB : SQUARE RING	3.5 → 3.5mm ² etc	
FT : FLAG RING		

1.25 Y - 3

Nominal size	Shape of tongue	Stud size(mm)
1.25 → 1.25mm ²	Y : SPADE	
2 → 2mm ²	LY : LOCKING SPADE	
3.5 → 3.5mm ² etc		

RING TERMINALS (R TYPE)

JIS C 2805



A

RoHS10
See page 2

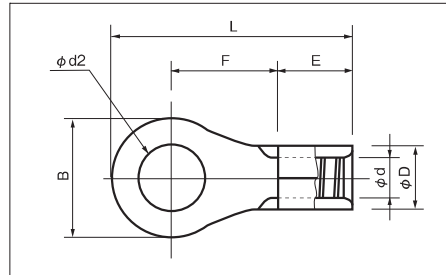
PART NUMBER		DIMENSIONS mm						WIRE RANGE			TOOL No.		STD QTY/BOX	
		φd2	B	L	F	E	φD	φd	SOLID mm	STRAINED mm ²	AWG	HAND TOOL No.		TOOL BODY No. / DIES No.
R 0.3-2	○	2.2	5.2	12.0	4.9	4.5	2.2	1.0	-	0.2~0.5	24-20	NH 69		1,000 (100×10)
R 0.3-3	○	3.2		12.0	4.9									
R 0.3-3N	○			14.3	7.2									
R 0.3-3.5	○	3.7	6.6	15.0	7.2									
R 0.3-4	○	4.3												
R 0.3-5	○	5.3	8.0	15.5	7.0	NA 10 NA 3	N10 04 N3 70							
R 0.75-3	○	3.2	5.6	12.0	4.7	4.5	2.5	1.4	-	0.3~0.75	22-18	NH 69		1,000 (100×10)
R 0.75-3.5	○	3.7												
R 0.75-4	○	4.3												
R 1.25-2	○	2.2	5.5	12.0	4.75									
R 1.25-2S	○		5.7	11.9	4.55									
R 1.25-3	●	3.2	5.5	12.0	4.75									
R 1.25-3N	○		5.6	14.9	7.6									
R 1.25-3S	○		5.7	11.9	4.55									
R 1.25-3.5N	○	3.7	5.6	14.9	7.6									
R 1.25-3.5S	○		5.7	11.9	4.55									
R 1.25-3.5	●		6.6	13.3	5.5									
R 1.25-3.5M	○		6.8	13.9	6.0									
R 1.25-3.5L	○		8.0	15.6	7.1									
R 1.25-4S	○	4.3	6.6	13.3	5.5									
R 1.25-4M	○		6.8	13.9	6.0									
R 1.25-4	●	5.3	8.0	15.6	7.1									
R 1.25-5	●													
R 1.25-6	○					6.4								
R 1.25-8	○	8.4	12.0	20.2	9.7	NA 10 NA 3	N10 01 N3 7							
R 1.25-10	○	10.5	16.5	25.0	12.25									
R 2-2	○	2.2	6.5	12.7	4.95	4.5	4.2	2.3	-	1.14 1.82	1.04 2.63	16-14	NH 1 NH 9 NH 69	1,000 (100×10)
R 2-3N	○	3.2	5.6	14.9	7.6									
R 2-3S	○		5.7	12.3	4.95									
R 2-3	○		6.5	12.7										
R 2-3.5N	○	3.7	5.6	14.9	7.6									
R 2-3.5NS	○		6.5	12.7	4.95									
R 2-3.5	●		6.6	14.4	6.6									
R 2-3.5S	○		6.6	15.4	7.6									
R 2-3.5M	○		8.0	16.0	7.5									
R 2-4S	○	4.3	6.6	14.4	6.6									
R 2-4M	○		8.0	16.0	7.5									
R 2-4	●		8.5	16.5	7.75									
R 2-5M	○	5.3	8.0	16.0	7.5									
R 2-5	●		9.5	17.0	7.75									
R 2-5L	○		12.0	21.5	11.0									
R 2-6	●	6.4	12.0	21.5	11.0									
R 2-8	●	8.4												
R 2-10	○	10.5				15.0	24.5	12.5	NA 10 NA 3	N10 02 N3 7				
R 2-12	○	13.0	19.0	28.5	14.5									

NOTE 1) ● : JIS, UL, CSA ○ : UL, CSA
2) Refer to page 12 for UL/ CSA and proper strip length of wire.

RING TERMINALS (R TYPE)

JIS C 2805

■ R TYPE



A

RoHS 10

See page 2

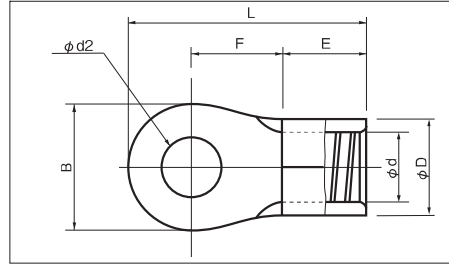
PART NUMBER	DIMENSIONS mm							WIRE RANGE			TOOL No.		STD QTY/BOX
	ϕd2	B	L	F	E	ϕD	ϕd	SOLID mm	STRANDED mm ²	AWG	HAND TOOL No. TOOL BODY No. DIES No.		
R 3.5-4S ※	4.3	7.0	17.5	8.0	6.0	5.1	3.0	1.82 } 2.4	2.63 } 4.6	12	NH 1 NH 9	1,000 (100×10)	
R 3.5-4 ○		8.0	18.0										
R 3.5-5N ※ ○	5.3	9.6	20.0	9.2	6.0	5.1	3.0	1.82 } 2.4	2.63 } 4.6	12	NH 1 NH 9	1,000 (100×10)	
R 3.5-5S ○		12.0	21.4										
R 3.5-5L ○	6.4	9.6	20.0	9.2	6.0	5.1	3.0	1.82 } 2.4	2.63 } 4.6	12	NH 1 NH 9	1,000 (100×10)	
R 3.5-6 ○		12.0	21.4										
R 3.5-6L ○	8.4	13.5	25.5	12.75	6.0	5.1	3.0	1.82 } 2.4	2.63 } 4.6	12	NA 10 N10 03	1,000 (100×10)	
R 3.5-8 ○		13.5	25.5										
R 5.5-3M ※ ○	3.2	6.5	16.95	7.2	6.5	5.6	3.4	1.82 } 2.89	2.63 } 6.64	12-10	NH 1 NH 9	1,000 (100×10)	
R 5.5-3N ※ ○		7.0	17.2										
R 5.5-3S ※ ○	3.7	9.0	18.2	7.2	6.5	5.6	3.4	1.82 } 2.89	2.63 } 6.64	12-10	NH 1 NH 9	1,000 (100×10)	
R 5.5-3.5N ※ ○		7.0	17.2										
R 5.5-3.5S ※ ○	3.7	9.0	18.2	7.2	6.5	5.6	3.4	1.82 } 2.89	2.63 } 6.64	12-10	NH 1 NH 9	1,000 (100×10)	
R 5.5-3.5 ○		9.5	19.5										
R 5.5-4N ※ ○	4.3	7.0	17.2	7.2	6.5	5.6	3.4	1.82 } 2.89	2.63 } 6.64	12-10	NH 1 NH 9	1,000 (100×10)	
R 5.5-4S ※ ○		9.0	18.2										
R 5.5-4 ●	5.3	9.5	19.5	8.25	6.5	5.6	3.4	1.82 } 2.89	2.63 } 6.64	12-10	NH 1 NH 9	1,000 (100×10)	
R 5.5-5N ※ ○		8.0	17.7										
R 5.5-5S ※ ○	5.3	9.0	18.2	7.2	6.5	5.6	3.4	1.82 } 2.89	2.63 } 6.64	12-10	NH 1 NH 9	1,000 (100×10)	
R 5.5-5 ●		9.5	19.5										
R 5.5-6S ※	6.4	9.0	23.0	12.0	6.5	5.6	3.4	1.82 } 2.89	2.63 } 6.64	12-10	NH 1 NH 9	1,000 (100×10)	
R 5.5-6 ●		12.0											
R 5.5-8S ※	8.4	13.2	22.1	9.0	6.5	5.6	3.4	1.82 } 2.89	2.63 } 6.64	12-10	NH 1 NH 9	1,000 (100×10)	
R 5.5-8 ●		15.0	28.0										
R 5.5-10 ●	10.5	15.0	28.0	14.0	6.5	5.6	3.4	1.82 } 2.89	2.63 } 6.64	12-10	NH 1 NH 9	1,000 (100×10)	
R 5.5-12 ○	13.0	19.2	32.5	16.4	6.5	5.6	3.4	1.82 } 2.89	2.63 } 6.64	12-10	NH 1 NH 9	1,000 (100×10)	
R 5.5-14 ○	15.0	19.2	32.5	16.4	6.5	5.6	3.4	1.82 } 2.89	2.63 } 6.64	12-10	NA 10 N10 03 NA 3 N3 7	500 (50×10)	
R 8-4S ○	4.3	8.0	21.5	9.1	8.4	7.1	4.5	2.89 } 3.65	6.64 } 10.52	8	NH 1 NH 9 NOP 60 NOM 60	1,000 (100×10)	
R 8-4 ○		12.0	23.5										
R 8-5N ※	5.3	9.0	22.0	9.1	8.4	7.1	4.5	2.89 } 3.65	6.64 } 10.52	8	NH 1 NH 9 NOP 60 NOM 60	1,000 (100×10)	
R 8-5S ○		10.0	22.5										
R 8-5 ●	6.4	12.0	23.5	9.1	8.4	7.1	4.5	2.89 } 3.65	6.64 } 10.52	8	NH 1 NH 9 NOP 60 NOM 60	1,000 (100×10)	
R 8-6S ○		10.0	22.5										
R 8-6 ●	8.4	12.0	23.5	9.1	8.4	7.1	4.5	2.89 } 3.65	6.64 } 10.52	8	NH 1 NH 9 NOP 60 NOM 60	1,000 (100×10)	
R 8-8S ○		15.0	29.5										
R 8-8 ●	10.5	15.0	29.5	13.6	8.4	7.1	4.5	2.89 } 3.65	6.64 } 10.52	8	NH 1 NH 9 NOP 60 NOM 60	100	
R 8-10 ●		15.0	29.5										
R 8-12 ○	13.0	20.0	33.5	15.1	8.4	7.1	4.5	2.89 } 3.65	6.64 } 10.52	8	NH 1 NH 9 NOP 60 NOM 60	500 (50×10)	
R 8-14 ○	15.0	22.0	37.0	17.6	8.4	7.1	4.5	2.89 } 3.65	6.64 } 10.52	8	NA 20 N20 08	500 (50×10)	

NOTE 1) ● : JIS, UL, CSA ○ : UL, CSA 2) Refer to page 12 for UL/CSA and proper strip length of wire.
3) ※Specification is partly different from other ring terminals.

RING TERMINALS (R TYPE)

JIS C 2805

■ R TYPE



RoHS10
See page 2

A

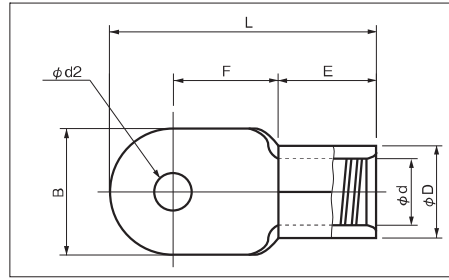
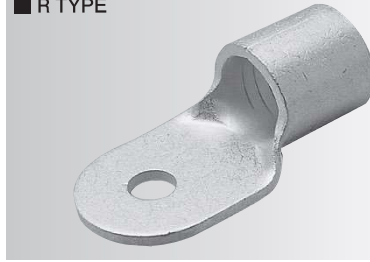
PART NUMBER	DIMENSIONS mm							WIRE RANGE			TOOL No.		STD QTY/BOX
	φd2	B	L	F	E	φD	φd	SOLID mm	STRAINED mm ²	AWG	HAND TOOL No.	TOOL BODY No. HEAD No.	
R 14-5N ※	5.3	9.0	26.0	11.5	10.0	9.0	5.8	-	10.52 } 16.78	6	NH 9 NOP 60 NOM 60 NOP 150HA NOM 150		100
R 14-5S ○		10.0	26.5										
R 14-5 ●		12.0	27.5										
R 14-6S ○	6.4	10.0	26.5										
R 14-6 ●		12.0	27.5										
R 14-6L ○	8.4	16.0	32.5	14.5									
R 14-8S ○		12.0	27.5	11.5									
R 14-8 ●		16.0	32.5	14.5									
R 14-10 ●	10.5	16.0	32.5	14.5									
R 14-12 ●	13.0	22.0	40.0	19.0									
R 14-14 ●	15.0	30.0	48.5	23.5									
R 14-16 ○	17.0												
R 14-20 ○	21.0												
R 14-20 ○											NA 20	N20 14	50
R 22-5N ※	5.3	9.3	27.5	11.0	12.0	11.6	7.7	-	16.78 } 26.66	4	NOP 60 NOM 60 NOP 150HA NOM 150		100
R 22-5S ※ ○		11.8	31.4	13.5									
R 22-5 ○		16.5	33.3	13.05									
R 22-6S ※ ○	6.4	11.8	31.4	13.5									
R 22-6 ●		16.5	33.3	13.05									
R 22-8S ※ ○	8.4	11.8	31.4	13.5									
R 22-8 ●		16.5	33.3	13.05									
R 22-10S ※		10.5	17.5	36.3									
R 22-10 ●	13.0	22.0	42.3	19.3									
R 22-12 ●	15.0	30.0	51.3	24.3									
R 22-14 ●	17.0												
R 22-16 ○	21.0												
R 22-20 ○											NA 20	N20 22	50
R 38-5 ○	5.3	22.0	42.3	18.3	13.0	13.4	9.4	-	26.66 } 42.42	2	NOP 60 NOM 60 NOP 150HA NOM 150		100
R 38-6S ※ ○	6.4	15.3	39.0	18.35									
R 38-6 ○		22.0	42.3	18.3									
R 38-8S ※ ○	8.4	15.3	39.0	18.35									
R 38-8 ●		22.0	42.3	18.3									
R 38-10S ※ ○	10.5	15.3	39.0	18.35									
R 38-10 ●	13.0	22.0	42.3	18.3									
R 38-12 ●	15.0	30.0	52.3	24.3									
R 38-14 ●	17.0												
R 38-16 ○	21.0												
R 38-20 ○											NA 20	N20 38	50

※Current, tensile length, etc. are rated lower than other terminals of the same wire size.(refer to page 147)

RING TERMINALS (R TYPE)

JIS C 2805

■ R TYPE



A

RoHS 10

See page 2

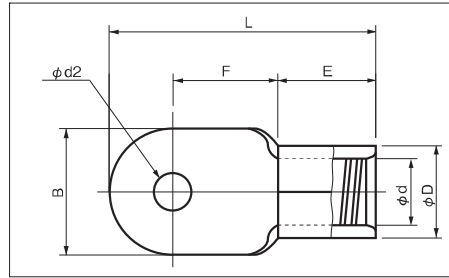
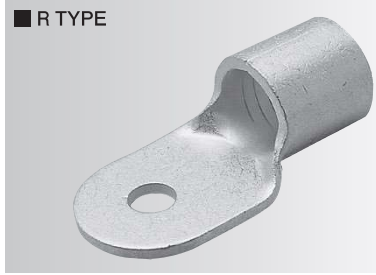
PART NUMBER	DIMENSIONS mm							WIRE RANGE			TOOL No.		STD QTY/BOX
	φd2	B	L	F	E	φD	φd	SOLID mm	STRANDED mm ²	AWG MCM	TOOL BODY No.	HEAD No.	
R 60-6S ※	6.4	16.0	46.5	20.0	18.5	15.6	11.4	-	42.42 ∩ 60.57	1/0	NOP 60 NOM 60 NOP 150HA NOM 150		100
R 60-6 ○	6.4	22.0	48.5	19.0									
R 60-8S ※	8.4	16.0	46.5	20.0									
R 60-8 ●	8.4	22.0	48.5	19.0									
R 60-10S ※	10.5	16.0	46.5	20.0									
R 60-10 ●	10.5	22.0	48.5	19.0									
R 60-12 ●	13.0	32.0	57.3	22.8									
R 60-14 ●	15.0												
R 60-16 ○	17.0												
R 60-20 ○	21.0												
R 60-22 ○	23.0												
R 60-22 ○	23.0												
R 70-8 ○	8.4	24.0	51.0	20.0	19.0	17.6	13.5	-	60.57 ∩ 76.28	2/0	NOP 150HA NOM 150		25
R 70-10 ○	10.5												
R 70-12 ○	13.0												
R 70-14 ○	15.0												
R 70-16 ○	17.0												
R 70-20 ○	21.0												
R 70-22 ○	23.0												
R 80-8 ○	8.4	27.0	52.5	20.0	19.0	19.6	14.5	-	76.28 ∩ 96.3	3/0	NOP 150HA NOM 150		50
R 80-10 ○	10.5												
R 80-12 ○	13.0												
R 80-14 ○	15.0												
R 80-16 ○	17.0												
R 80-20 ○	21.0												
R 80-22 ○	23.0												
R 100-8 ○	8.4	28.5	53.5	20.25	19.0	22.5	16.4	-	96.3 ∩ 117.2	4/0	NOP 150HA NOM 150		20
R 100-8 ●	8.4												
R 100-10 ●	10.5												
R 100-10L	10.5												
R 100-12 ●	13.0												
R 100-12L	13.0												
R 100-14 ●	15.0												
R 100-16 ●	17.0												
R 100-18 ●	19.0												
R 100-20 ●	21.0												
R 100-22 ○	23.0												
R 150-8 ○	8.4	36.0	67.3	22.3	27.0	26.6	19.5	-	117.2 ∩ 152.05	250 ∩ 300 MCM	NOP 150HA NOM 150		20
R 150-10 ●	10.5												
R 150-12 ●	13.0												
R 150-12L	13.0												
R 150-14 ●	15.0												
R 150-16 ●	17.0		83.3	38.3									
R 150-18 ●	19.0												
R 150-20 ●	21.0												
R 150-22 ○	23.0												
R 150-27 ○	28.0										42.0	35.3	

NOTE 1) ● : JIS, UL, CSA ○ : UL, CSA
2) Refer to page 12 for UL/CSA and proper strip length of wire.

RING TERMINALS (R TYPE)

JIS C 2805

■ R TYPE



RoHS 10

See page 2

A

PART NUMBER	DIMENSIONS mm							WIRE RANGE			TOOL No.		STD QTY/BOX									
	phi d2	B	L	F	E	phi D	phi d	SOLID mm	STRANDED mm ²	AWG MCM	HAND TOOL No.	TOOL BODY No.		HEAD No.								
R 180-10 ○	10.5	38.5	77.0	28.05	29.7	28.5	20.2	-	152.05 192.6	300 350 MCM	NOP 700 NOM 2500A NOM 3000	NOH 300K	10									
R 180-12 ○	13.0																					
R 180-14 ○	15.0																					
R 180-16 ○	17.0		87.0	38.05																		
R 180-18 ○	19.0																					
R 180-20 ○	21.0																					
R 180-22 ○	23.0																					
R 200-10N ○	10.5	44.0	73.2	24.5	33.2	32.9	24.0	-	192.6 242.27	400 MCM	NOP 700 NOM 2500A NOM 3000	NOH 300K	10									
R 200-10S ○	13.0		80.0	24.8																		
R 200-12N ○	15.0		73.2	24.5																		
R 200-12S ○	17.0		80.0	24.8																		
R 200-12 ●	19.0		91.0	35.8																		
R 200-14 ●	21.0																					
R 200-16 ●	23.0																					
R 200-18 ●	25.0																					
R 200-20 ●	27.0																					
R 200-22 ●	29.0																					
R 200-24 ●	31.0																					5
R 200-27 ●	33.0																					
R 250-12	13.0	44.0	91.0	35.8	33.2	35.6	26.5	-	250	-	REC-Li250M		10									
R 250-14	15.0																					
R 250-16	17.0																					
R 325-10N ○	10.5	50.5	49.0	88.5	33.0	36.5	37.8	28.0	-	242.27 325	500 600 MCM	NOP 700 NOM 2500A NOM 3000	NOH 300K	10								
R 325-10S ○	13.0		50.5	95.0	33.25																	
R 325-12N ○	15.0		49.0	88.5	33.0																	
R 325-12S ○	17.0		105.0	43.25																		
R 325-14S ○	19.0																					
R 325-14S ○	21.0																					
R 325-16 ●	23.0																					
R 325-18 ●	25.0																					
R 325-20 ●	27.0																					
R 325-22 ●	29.0																					5
R 325-24 ●	31.0																					
R 325-27 ●	33.0																					

NOTE 1) ● : JIS, UL, CSA ○ : UL, CSA
 2) Refer to page 12 for UL/CSA and proper strip length of wire.