



Suitable for machine tool equipment that needs excellent water and oil proof features

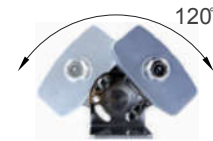


Common Specifications

- Special sealing structure provides excellent oil resistance, suitable for environments with high temperature cutting oil
- Suitable for high pressure and high temperature water cleaning environments(IP69K)
- Tempered glass prevents damage from machine tool chips
- Bracket included has tilt adjustment with angle of 120°
- Can select from variety of body length of 200/ 300/ 400/ 500/ 600mm to fit your application needs
- Can choose anti-glare lens type depending on work environment needs
- Certificates : CE, UL Compliant



Tilt Type K Bracket



The standard bracket included enables tilt adjustment with angle of 120°



Structural Features

Special sealing structure features superior oil resistance
Prevents components from moving in the sealed body due to warpage from high temperature over a period of time

Chemically Tempered Glass
Prevents shock damage from machine tool chips

Special Micro Lens
Provides high luminance with superior light focusing capability, suitable for work environments that need long distance direct visibility

Aluminum Heat-Radiant Housing
Adopted special heat-radiant structure to provide stable luminance in high temperature sealed environment

M12 Connector Attached Type

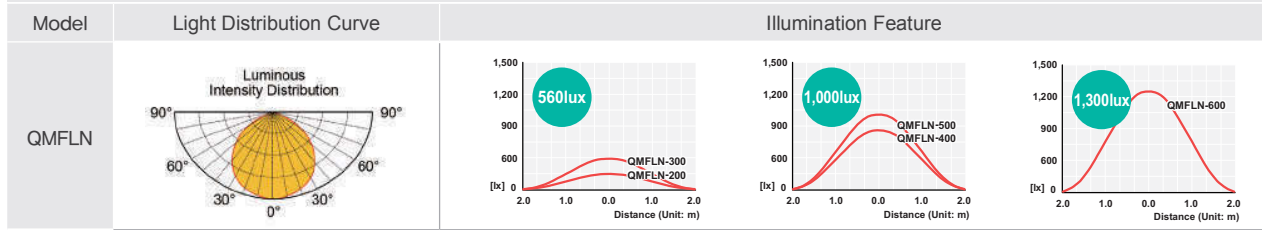


Customized cable entry M12 connector attached type available.

Test Conditions/ Regulations

Vibration Resistance Test	<ul style="list-style-type: none"> • Acceleration : 20m/s² • Duration : 1 octave/min • Range of frequency : 10-150Hz • Amplitude : Maximum 7.5mm, Direction : tested 10times each 3 directions(X, Y, Z)
Shock Resistance Test	<ul style="list-style-type: none"> • Acceleration : 20g • Directions : ±X, ±Y, ±Z • Numbers : 3 times each directions • Time period : 11ms for each direction • Waveform : Half sine
Oil Resistance Test	<ul style="list-style-type: none"> • General test : Tested in water soluble and non-water soluble flooded environments for 500 hours. • High temperature oil resistance test : Place the object in a constant temperature water bath at 80°C for two hours and then submerge the object in the room temperature oil diluent for 24hours.
Solid Particle Protection Test(IP6X)	<ul style="list-style-type: none"> • After reducing the pressure inside the test object, spray talcum powder with a nominal diameter of 50um for 2 hours at 40-60meters/hour inside the dust chamber. • IEC60529
Liquid Ingress Protection Test(IPX7)	<ul style="list-style-type: none"> • Test ingress by putting the object under 1000mm water with 2bar of pressure for 30 mins
High-pressure, High-temperature Wash-down Test (IP69K)	<ul style="list-style-type: none"> • Spray nozzle provides 80°C water with pressure of 80–100 bar and a flow rate of 14–16 L/min to the object • Distance between spray nozzle and the test object : 10-15cm • Water spray angle : 0°, 30°, 60°, 90° • The nozzle is held at 4 of each angle for 30 seconds • DIN 40050 PART9

Light Distribution and Illuminance



Optics Specifications

Model		QMFLN-200	QMFLN-300	QMFLN-400	QMFLN-500	QMFLN-600
Lens color	(Blank)	Transparent	Transparent	Transparent	Transparent	Transparent
	TLC	Translucent	Translucent	Translucent	Translucent	Translucent
Light color		Cooldaylight				
Color temperature		6,000-7,000K				
Luminous flux	(Blank)	359lm	851lm	1,284lm	1,553lm	1,719lm
	TLC	306lm	730lm	1,109lm	1,394lm	1,532lm
Efficacy (lm/W)	(Blank)	240Lux	560Lux	850Lux	1,000Lux	1,300Lux
	TLC	160Lux	370Lux	580Lux	750Lux	1,050Lux

Specifications

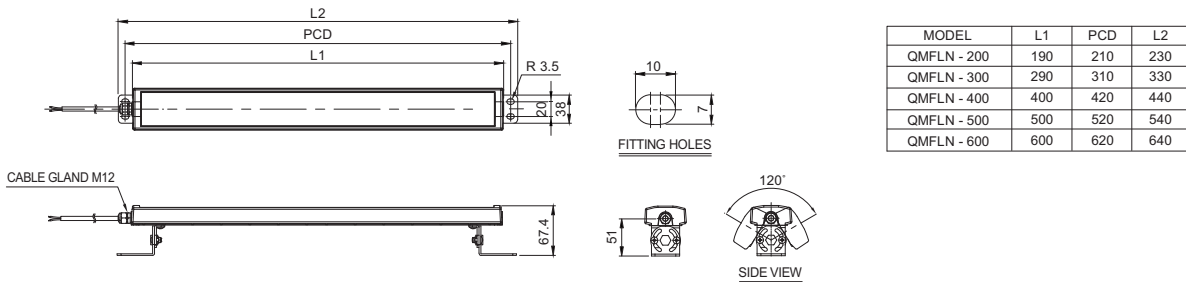
Model	QMFLN-200	QMFLN-300	QMFLN-400	QMFLN-500	QMFLN-600
Voltage	DC24V				
Range for operation voltage	DC22V-30V				
Current	0.235A	0.520A	0.816A	1.050A	1.050A
Power consumption	5.6W	12.5W	20W	25W	25W
Power consumption	Min. 100MΩ(500V DC mega ohm meter)				
Withstanding voltage	500V AC, 60Hz, 1 minute				
Operation temperature	-30°C to +60°C				
Protection rating	IP67/ IP69K				
Materials	Housing: Al, Lens : Tempered glass, Bracket : Spc-1				
Certificates	CE DC24V Only UL DC24V Only				
Weight (Approx.)	0.57kg	0.80kg	1.03kg	1.26kg	1.49kg



Technical Diagram

(Units : mm)

QMFLN-200/ 300/ 400/ 500/ 600



※ External power line - Dura & Flex-FVU(0.5sq) x 2C 450mm



Ordering Specification

QMFLN	-	200	-	24	-	TLC
[Model number]		[Product length]		[Voltage]		[Lens type]
• QMFLN		• 200 : 190mm • 300 : 290mm • 400 : 400mm • 500 : 500mm • 600 : 600mm		• 24-DC24V		• (Blank) - Transparent lens • TLC - Translucent lens

