

QA85LSE



QA85HLS

PRODUCT SPECIFICATION

QA85LSE

Materials Lens-PC, Housing-ABS

Ambient operating temperature -30°C to +50°C

Protection rating IP65

Flashing rate LED flash type: 60-80 flashes/min

LED strobe type 1: 60-80 flashes/min

LED strobe type 2: 40-60/min

- Ultra-high brightness LED strobe light for heavy equipment that maximizes light efficiency by applying a special diffused lens
- Emit strong signal light like xenon lamp by compensating for the signal light attenuation that occurs during the day
- Various functions of steady-flash-strobe are available

QA85LSE LED Strobe Warning Lights

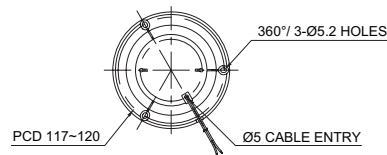
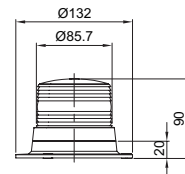
Model number	Voltage	Operation mode	Current	Flashing rate	Certificates	Weight	Color
QA85LSE	DC12V-24V	steady	Max. 0.150A	-	-	0.16kg	<ul style="list-style-type: none"> ● R-Red ● A-Amber ● G-Green ● B-Blue
		flashing	Max. 0.290A	60-80 flashes/min			
		Strobe1	Max. 0.180A	60-80 flashes/min			
		Strobe2	Max. 0.180A	40-60/min			

※ DC type model has a free-voltage range of 10V-30V.

Technical Diagram

Units: mm

·QA85LSE



Wiring Instructions

- External power line UL2464 20AWG x 2C 400mm
- DC Type: Black output line is negative(-).

Customization

- User selected connector type available upon request

Ordering Specification

QA85LSE	-	12/24	-	R
[Model number]		[Voltage]		[Color]
QA85LSE		12/24-DC12V-24V		<ul style="list-style-type: none"> ● R-Red ● A-Amber ● G-Green ● B-Blue