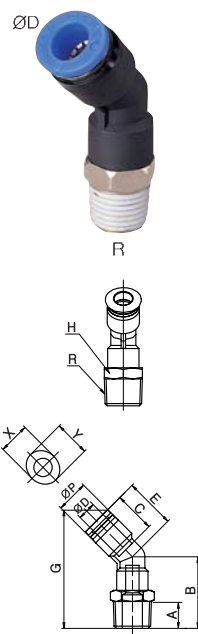


PL45

Male 45° Elbow



MODEL [ØD-T]

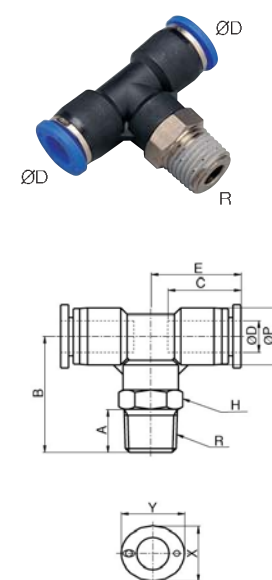
Tube (Metric) - Thread(R)			
MODEL	ØD	R	
PL45 04-M5	4	M5	
PL45 04-M6	4	M6	
PL45 04-01	4	R1/8	
PL45 04-02	4	R1/4	
PL45 04-03	4	R3/8	
PL45 06-M5	6	M5	
PL45 06-M6	6	M6	
PL45 06-01	6	R1/8	
PL45 06-02	6	R1/4	
PL45 06-03	6	R3/8	
PL45 06-04	6	R1/2	
PL45 08-01	8	R1/8	
PL45 08-02	8	R1/4	
PL45 08-03	8	R3/8	
PL45 08-04	8	R1/2	
PL45 10-01	10	R1/8	
PL45 10-02	10	R1/4	
PL45 10-03	10	R3/8	
PL45 10-04	10	R1/2	
PL45 12-01	12	R1/8	
PL45 12-02	12	R1/4	
PL45 12-03	12	R3/8	
PL45 12-04	12	R1/2	

Tube (Inch) - Thread(R)			
MODEL	ØD	R	
PL45 5/32-R01	5/32	R1/8	
PL45 5/32-R02	5/32	R1/4	
PL45 5/32-R03	5/32	R3/8	
PL45 3/16-R01	3/16	R1/8	
PL45 3/16-R02	3/16	R1/4	
PL45 3/16-R03	3/16	R3/8	
PL45 1/4-R01	1/4	R1/8	
PL45 1/4-R02	1/4	R1/4	
PL45 1/4-R03	1/4	R3/8	
PL45 1/4-R04	1/4	R1/2	
PL45 5/16-R01	5/16	R1/8	
PL45 5/16-R02	5/16	R1/4	
PL45 5/16-R03	5/16	R3/8	
PL45 5/16-R04	5/16	R1/2	
PL45 3/8-R01	3/8	R1/8	
PL45 3/8-R02	3/8	R1/4	
PL45 3/8-R03	3/8	R3/8	
PL45 3/8-R04	3/8	R1/2	
PL45 1/2-R01	1/2	R1/8	
PL45 1/2-R02	1/2	R1/4	
PL45 1/2-R03	1/2	R3/8	
PL45 1/2-R04	1/2	R1/2	

Tube (Inch) - Thread (NPT)			
MODEL	ØD	R	
PL45 5/32-U10U	5/32	UNF10 *32	
PL45 5/32-N01U	5/32	NPT1/8	
PL45 5/32-N02U	5/32	NPT1/4	
PL45 5/32-N03U	5/32	NPT3/8	
PL45 3/16-U10U	3/16	UNF10 *32	
PL45 3/16-N01U	3/16	NPT1/8	
PL45 3/16-N02U	3/16	NPT1/4	
PL45 3/16-N03U	3/16	NPT3/8	
PL45 1/4-U10U	1/4	UNF10 *32	
PL45 1/4-N01U	1/4	NPT1/8	
PL45 1/4-N02U	1/4	NPT1/4	
PL45 1/4-N03U	1/4	NPT3/8	
PL45 1/4-N04U	1/4	NPT1/2	
PL45 5/16-N01U	5/16	NPT1/8	
PL45 5/16-N02U	5/16	NPT1/4	
PL45 5/16-N03U	5/16	NPT3/8	
PL45 5/16-N04U	5/16	NPT1/2	
PL45 3/8-N01U	3/8	NPT1/8	
PL45 3/8-N02U	3/8	NPT1/4	
PL45 3/8-N03U	3/8	NPT3/8	
PL45 3/8-N04U	3/8	NPT1/2	
PL45 1/2-N01U	1/2	NPT1/8	
PL45 1/2-N02U	1/2	NPT1/4	
PL45 1/2-N03U	1/2	NPT3/8	
PL45 1/2-N04U	1/2	NPT1/2	

PT

Male Branch Tee



MODEL [ØD-T]

Tube (Metric) - Thread(R)			
MODEL	ØD	R	
PT 04-M5	4	M5	
PT 04-M6	4	M6	
PT 04-01	4	R1/8	
PT 04-02	4	R1/4	
PT 04-03	4	R3/8	
PT 06-M5	6	M5	
PT 06-M6	6	M6	
PT 06-01	6	R1/8	
PT 06-02	6	R1/4	
PT 06-03	6	R3/8	
PT 06-04	6	R1/2	
PT 08-01	8	R1/8	
PT 08-02	8	R1/4	
PT 08-03	8	R3/8	
PT 08-04	8	R1/2	
PT 10-01	10	R1/8	
PT 10-02	10	R1/4	
PT 10-03	10	R3/8	
PT 10-04	10	R1/2	
PT 12-01	12	R1/8	
PT 12-02	12	R1/4	
PT 12-03	12	R3/8	
PT 12-04	12	R1/2	
PT 16-03	16	R3/8	
PT 16-04	16	R1/2	

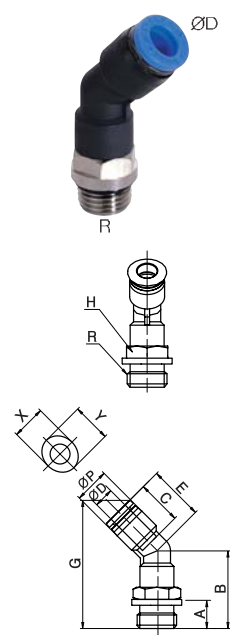
Tube (Inch) - Thread(R)			
MODEL	ØD	R	
PT 5/32-R01	5/32	R1/8	
PT 5/32-R02	5/32	R1/4	
PT 5/32-R03	5/32	R3/8	
PT 1/4-R01	1/4	R1/8	
PT 1/4-R02	1/4	R1/4	
PT 1/4-R03	1/4	R3/8	
PT 1/4-R04	1/4	R1/2	
PT 5/16-R01	5/16	R1/8	
PT 5/16-R02	5/16	R1/4	
PT 5/16-R03	5/16	R3/8	
PT 5/16-R04	5/16	R1/2	
PT 3/8-R01	3/8	R1/8	
PT 3/8-R02	3/8	R1/4	
PT 3/8-R03	3/8	R3/8	
PT 3/8-R04	3/8	R1/2	
PT 1/2-R01	1/2	R1/8	
PT 1/2-R02	1/2	R1/4	
PT 1/2-R03	1/2	R3/8	
PT 1/2-R04	1/2	R1/2	

Tube (Inch) - Thread (NPT)			
MODEL	ØD	R	
PT 5/32-U10U	5/32	UNF10 *32	
PT 5/32-N01U	5/32	NPT1/8	
PT 5/32-N02U	5/32	NPT1/4	
PT 5/32-N03U	5/32	NPT3/8	
PT 3/16-U10U	3/16	UNF10 *32	
PT 3/16-N01U	3/16	NPT1/8	
PT 3/16-N02U	3/16	NPT1/4	
PT 3/16-N03U	3/16	NPT3/8	
PT 1/4-U10U	1/4	UNF10 *32	
PT 1/4-N01U	1/4	NPT1/8	
PT 1/4-N02U	1/4	NPT1/4	
PT 1/4-N03U	1/4	NPT3/8	
PT 1/4-N04U	1/4	NPT1/2	
PT 5/16-N01U	5/16	NPT1/8	
PT 5/16-N02U	5/16	NPT1/4	
PT 5/16-N03U	5/16	NPT3/8	
PT 5/16-N04U	5/16	NPT1/2	
PT 3/8-N01U	3/8	NPT1/8	
PT 3/8-N02U	3/8	NPT1/4	
PT 3/8-N03U	3/8	NPT3/8	
PT 3/8-N04U	3/8	NPT1/2	
PT 1/2-N01U	1/2	NPT1/8	
PT 1/2-N02U	1/2	NPT1/4	
PT 1/2-N03U	1/2	NPT3/8	
PT 1/2-N04U	1/2	NPT1/2	

*Rotating body construction after a proper installation.

PL45-G

Male 45° Elbow

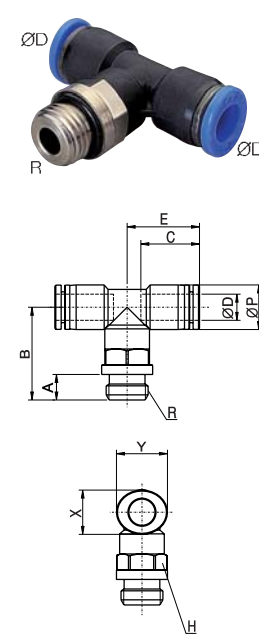


MODEL [ØD-T]

Tube (Metric) - Thread(G)			
MODEL	ØD	R	
PL45 04-G01	4	G1/8	
PL45 04-G02	4	G1/4	
PL45 04-G03	4	G3/8	
PL45 06-G01	6	G1/8	
PL45 06-G02	6	G1/4	
PL45 06-G03	6	G3/8	
PL45 06-G04	6	G1/2	
PL45 08-G01	8	G1/8	
PL45 08-G02	8	G1/4	
PL45 08-G03	8	G3/8	
PL45 08-G04	8	G1/2	
PL45 10-G01	10	G1/8	
PL45 10-G02	10	G1/4	
PL45 10-G03	10	G3/8	
PL45 10-G04	10	G1/2	
PL45 12-G01	12	G1/8	
PL45 12-G02	12	G1/4	
PL45 12-G03	12	G3/8	
PL45 12-G04	12	G1/2	

PT-G

Male Branch Tee



MODEL [ØD-T]

Tube (Metric) - Thread(G)			
MODEL	ØD	R	
PT 04-G01	4	G1/8	
PT 04-G02	4	G1/4	
PT 04-G03	4	G3/8	
PT 06-G01	6	G1/8	
PT 06-G02	6	G1/4	
PT 06-G03	6	G3/8	
PT 06-G04	6	G1/2	
PT 08-G01	8	G1/8	
PT 08-G02	8	G1/4	
PT 08-G03	8	G3/8	
PT 08-G04	8	G1/2	
PT 10-G01	10	G1/8	
PT 10-G02	10	G1/4	
PT 10-G03	10	G3/8	
PT 10-G04	10	G1/2	
PT 12-G01	12	G1/8	
PT 12-G02	12	G1/4	
PT 12-G03	12	G3/8	
PT 12-G04	12	G1/2	
PT 16-G03	16	G3/8	
PT 16-G04	16	G1/2	