

BULLETS & RECEPTACLES (PC · PCE TYPE)

SPECIFICATION

■ MATERIAL : Terminal : Brass (Electro-tin-plated)
Sleeve : Oxygen free copper tube
(electro-tin-plated)

Insulator: Nylon

■ RATED VOLTAGE : 300V

■ RATED CURRENT : See following table

Wire mm ²	0.5	0.75	1.25	2
A	10	12	15	20

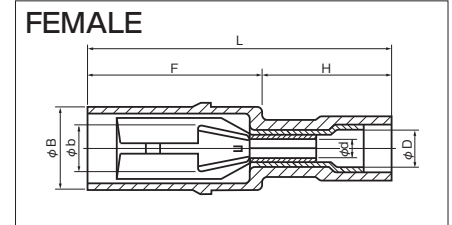
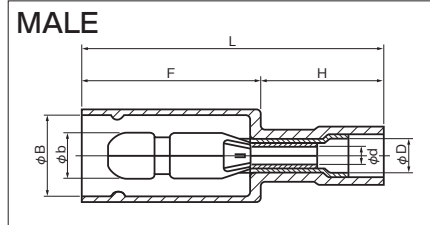
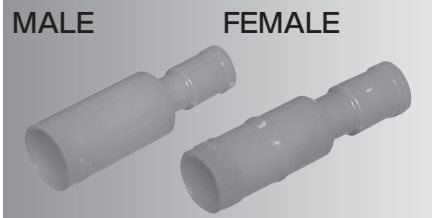
■ INSULATOR TEMPERATURE : - 40°C ~ + 105°C

■ FLAME RETARDANCE : UL94V2

■ APPLICABLE WIRE : Performance ratings comply with JIS standards wire (IV · KIV · VSF)

PC TYPE

RoHS 10
See page 2

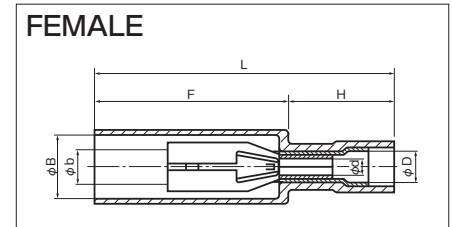
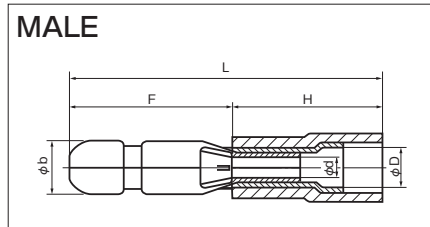
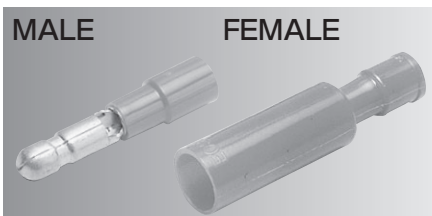


PART NUMBER	DIMENSIONS mm							WIRE RANGE		TOOL No.		INS	STD COLOR	STD QTY/BOX
	φb	φB	φd	φD	L	F	H	STRANDED mm ²	AWG	HAND TOOL No.	DIES No.			
PC 2005-M	2.0	5.1	1.7	3.1	26.5	15.0	11.5	0.5 0.75	20-18	NH 5 NH 32 NA 10 NA 3	N10 10 N3 5	Nylon	TRANSLUCENT	1,000 (100×10)
PC 2005-F	2.0	4.6			24.5	13.0								
PC 4009-M	4.0	7.4	1.8	3.2	27.7	16.5	11.2	0.75 1.25	18-16	NH 11 NH 32 NA 10 NA 3	N10 11 N3 11		RED	1,000 (100×10)
PC 4009-F	3.95	6.9			26.2	15.0								
PC 4020-M	4.0	7.4	2.4	3.9	27.7	16.5	11.2	2.0	14	NH 12 NH 32 NA 10 NA 3	N10 12 N3 12		BLUE	1,000 (100×10)
PC 4020-F	3.95	6.9			26.2	15.0								

No insulator lock on PC2005.

PCE TYPE

RoHS 10
See page 2



PART NUMBER	DIMENSIONS mm							WIRE RANGE		TOOL No.		INS	STD COLOR	STD QTY/BOX
	φb	φB	φd	φD	L	F	H	STRANDED mm ²	AWG	HAND TOOL No.	DIES No.			
PCE 4009-M	4.0	—	1.8	3.2	25.2	13.0	12.2	0.75 1.25	18-16	NH 11 NH 32 NA 10 NA 3	N10 11 N3 11	Nylon	RED	1,000 (100×10)
PCE 4009-F	3.95	6.5			31.5	20.3	11.2							
PCE 4020-M	4.0	—	2.4	3.9	25.2	13.0	12.2	2.0	14	NH 12 NH 32	N10 12 N3 12		BLUE	500 (100×5)
PCE 4020-F	3.95	6.5			31.5	20.3	11.2							
PCE 5020-M	5.0	—	2.4	3.9	25.2	13.0	12.2	2.0	14	NA 10 NA 3	N10 12 N3 12		BLUE	500 (100×5)
PCE 5020-F	4.95	7.4			31.5	20.3	11.2							

