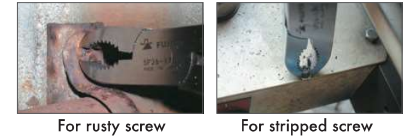


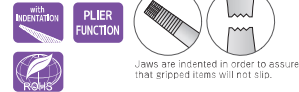
# LONG NOSE PLIERS

SCREW PLIERS	39
SCREW PLIERS	40
MECHANIC PLIERS STRAIGHT	40
MECHANIC PLIERS ERGO GRIP	40
LONG NOSE PLIERS	41
BENT LONG NOSE PLIERS	41
SIDE BENT LONG NOSE PLIERS	41
MULTI-PURPOSE LONG NOSE PLIERS	41
LONG NOSE PLIERS	42
LONG FLAT NOSE PLIERS	42
STAINLESS LONG NOSE PLIERS	42
STAINLESS BENT NEEDLE NOSE PLIERS	42
MINITECH SHORT NOSE PLIERS	43
MINITECH BENT SHORT NOSE PLIERS	43
MINITECH SUPER MICRO LONG NOSE PLIERS	43
MINITECH TWEEZER LONG NOSE PLIERS	44
TWEEZER LONG NOSE PLIERS	44

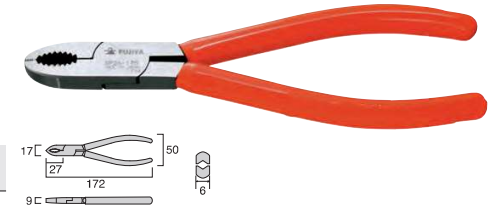
Easy to turn broken and special screw.  
Possible to hold correctly even though rust and special screw  
and to exert removal and control of Screw powerfully.



## SCREW PLIERS SP26-175



No.	SIZE mm	WEIGHT g/w	APPLICABLE SCREW SIZE	PACKAGE SIZE HxWxD(mm)	Quantity	JAN CODE
SP26-175	175	150	M2-M6	223x73x12	6	002674



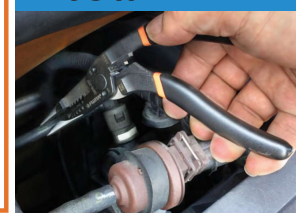
The grip is at a 40° curve, making it easier to see the nose.



No obstructions to one's view, making it easy to see what's being worked on.



Easily grippable

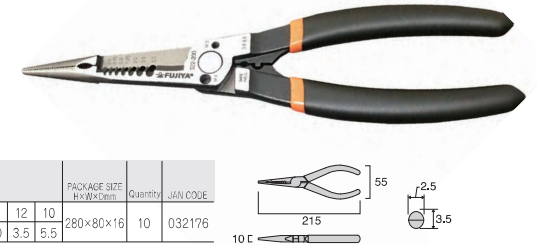


## MECHANIC PLIERS STRAIGHT 330-200



Stripping function Bolt cutting function (M3, M4) Crimping function (0.5-5.5mm<sup>2</sup>)

No.	SIZE mm	WEIGHT g/w	WIRE SIZE	PACKAGE SIZE HxWxD(mm)	Quantity	JAN CODE
330-200	215	190	AWG 22 20 18 16 14 12 10 0.3 0.5 0.9 1.3 2.0 3.5 5.5 (Cross section (mm <sup>2</sup> ))	280x80x16	10	032176

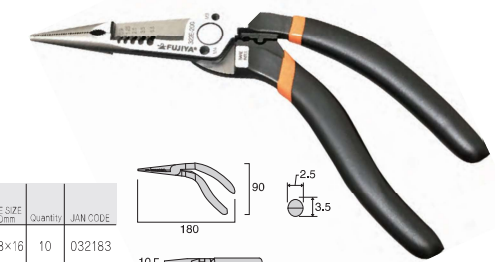


## MECHANIC PLIERS ERGO GRIP 330E-200



Stripping function Bolt cutting function (M3, M4) Crimping function (0.5-5.5mm<sup>2</sup>)

No.	SIZE mm	WEIGHT g/w	WIRE SIZE	PACKAGE SIZE HxWxD(mm)	Quantity	JAN CODE
330E-200	185	186	AWG 20 18 16 14 12 0.5 0.9 1.3 2.0 3.5 (Cross section (mm <sup>2</sup> ))	255x98x16	10	032183



Easy to turn broken and special screw.  
Possible to hold correctly even though rust and special screw and to exert removal and control of Screw powerfully.



For rusty screw For Stripped screw Wide ones also can be cut



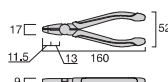
## SCREW PLIERS NSP01-150



adaptive screw type	screw size	Adaptive screw size						
		M2	M2.3	M2.5	M2.6	M3	M4	M5
Pan head screw	Head Diameter	3.5	4	4.5	4.5	5.5	7	9
Truss head screw	Head Diameter	4.5	5.7	6.9	9.4			



No.	SIZE mm	WEIGHT g/w	CUTTING PERFORMANCE	PACKAGE SIZE HxWxD(mm)	Quantity	JAN CODE
NSP01-150	150	180	STEEL WIRE mm Φ1.0 COPPER WIRE mm Φ1.5	200x73x15	6	002698



※The last six digits of JAN (Japanese Article Numbering) Code are displayed with the manufacturer code (4952520) omitted.

※The last six digits of JAN (Japanese Article Numbering) Code are displayed with the manufacturer code (4952520) omitted.