

ML Series D66mm Bulb Revolving Warning Signal Light



Smooth lens

Prism lens



Compact Revolving Warning Light perfectly designed for small devices.

- Incandescent or Xenon type
- Red, Yellow, Green and Blue lens available
- Smooth lens or Prism lens
- Stud mounted or Pole mounted
- Optional Wall Mounting Brackets available
- Wide range of power supply

Ordering Information

MLG F - 20 - R

① ② ③ ④

1. Mounting Style

MLG	Ø66mm Dome top lens Signal Light (Stud mount)
MLP	Ø66mm Dome top lens Signal Light (Pole mount)

2. Light Style

	Rotating Light (Smooth Lens)
F	Flashing Light (Prism Lens) - *Note
S	Strobe Light with Xenon Lamp (110VAC or 220VAC only)

3. Power Supply

01	12VAC/DC
02	24VAC/DC
10	110VAC
20	220VAC

4. Lens Colors

R	Red
Y	Yellow
G	Green
B	Blue

Note - Flashing types of DC power only

Specifications

Bulb Lights

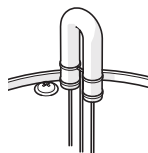
Operation/Function	Rotating , Flashing
Power Supply	12VAC/DC , 24VAC/DC , 110VAC , 220VAC (50/60Hz)
Lens Diameter	66 mm
Lens Color	Red, Yellow, Green, Blue (Lens Type :Smooth)
Rotation Rate	130rpm ±10%
Flash Rate	80 times/minute ±10%
Ambient Temperature	-15° to 40°C
Storage Temperature	-25° to 70°C
Ambient Humidity	45 ~ 85% RH
Degree of Protection	IP42
Approvals	CE, RoHS
Recommended Wire Size	AC 110/220V: VSF / 0.75mm ² (Power supply wire only) AC/DC 12/24V: 1007 UL / 22AWG

Current Draw

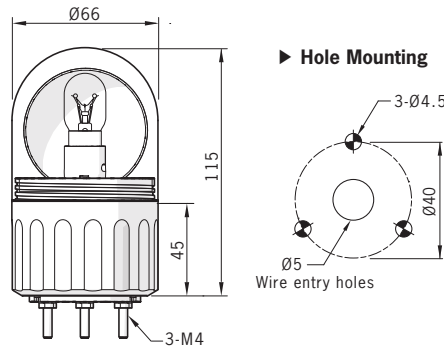
Power Supply	12V	24V	110V	220V
Current Draw	0.6A, 8W	0.3A, 8W	0.07A, 8W	0.03A, 8W

Xenon Strobe Lights

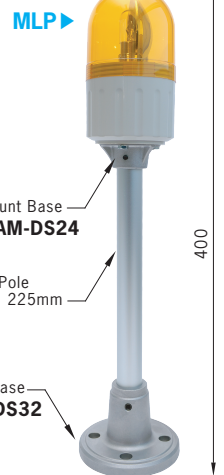
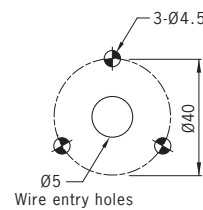
Power Supply	110VAC , 220VAC (50/60Hz)
Current	110VAC : 0.22A , 220VAC : 0.11A
Lens Color	Red, Yellow, Green, Blue (Lens Type : Prism)
Strobe Pulse	80 times/minute ±10%
Degree of Protection	IP42
Approvals	CE, RoHS
Recommended Wire Size	VSF / 0.75mm ² (Power supply wire only)
Lamp Wattage	6W Lamp



Dimensions (unit: mm)



▶ Hole Mounting



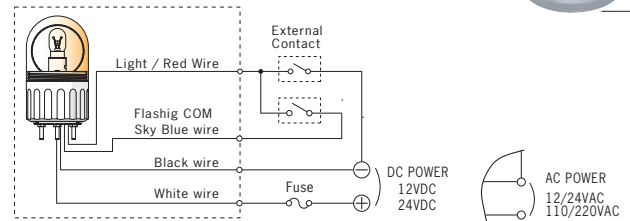
Mount Base
MAM-DS24

20mm Pole
Length: 225mm

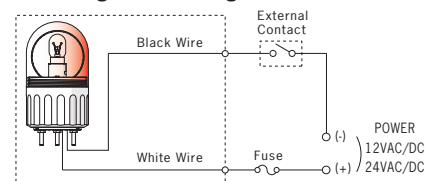
Mount Base
MAM-DS32

Wiring Diagram

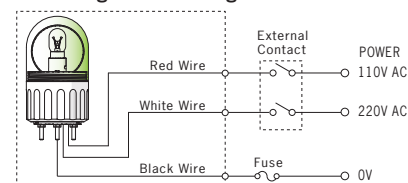
▶ Flashing Lights



▶ Rotating & Strobe Lights



▶ Rotating & Strobe Lights



Wall Mount Brackets



MAP-DS30
ABS resin



MAM-DS26
Steel

Replacement Parts

Rated Voltage	Bulb	Rated Voltage	Bulb
12VDC	12V 8W	110VAC	130V 8W
24VDC	24V 8W	220VAC	240V 8W

▶ See page 54 for Replacement Bulbs product

See Page 56 ~ 58 for Mounting Options and Accessories.

