




Illuminated Pushbuttons

Package Quantity: 1

Solder/Tab Terminal

Part No. / Shape	LBW ① L - ② ③ T ④ ⑤ ⑥ *					
<div style="border: 1px solid black; padding: 2px;">Flush</div> 	Round / Black Bezel	Square / Black Bezel	Round / Metallic Bezel	Square / Metallic Bezel	Round with Guard	Square with Guard
	<div style="border: 1px solid black; padding: 2px;">Extended</div>  (black bezel is also available)		<div style="border: 1px solid black; padding: 2px;">Flush Ring-illuminated</div>  (black bezel is also available)			
① Shape	② Operation	④ Contact	⑤ LED Operating Voltage	Part No.		* Illumination Color Code
Black bezel	Momentary	Gold/SPDT	24V AC/DC	LBW①L-M③T14*		Specify the color code in place of * in the Part No. A: amber G: green PW: pure white R: red S: blue Y: yellow
		Gold/DPDT		LBW①L-M③T24*		
	Maintained	Gold/SPDT	24V AC/DC	LBW①L-A③T14*		
		Gold/DPDT		LBW①L-A③T24*		
Metallic bezel	Momentary	Gold/SPDT	24V AC/DC	LBW①L-M③T14*		
		Gold/DPDT		LBW①L-M③T24*		
	Maintained	Gold/SPDT	24V AC/DC	LBW①L-A③T14*		
		Gold/DPDT		LBW①L-A③T24*		
Guard Type	Momentary	Gold/SPDT	24V AC/DC	LBW①L-M③T14*		
		Gold/DPDT		LBW①L-M③T24*		
	Maintained	Gold/SPDT	24V AC/DC	LBW①L-A③T14*		
		Gold/DPDT		LBW①L-A③T24*		

- Flush/Extended color code: A (amber), G (green), PW (pure white), R (red), S (blue), Y (yellow)
- Ring-illuminated color code: PW (pure white), WA (amber), WG (green), WR (red), WS (blue)
- Illuminated pushbuttons contain an LED unit. For details on LED units, see **B-130**.
- The guard opens 180 degrees spring-return.
- Illuminated pushbuttons can be used with legend markings. Engraving can be done on a marking plate which is placed in the lens, or a clear film can be printed and placed in the lens. See **B-134** for details on the marking plate and film.
- PC board terminals available for gold contacts. Silver contacts also available. To specify, see Part Number Development below.
- Extended pushbuttons available. To specify, see Part Number Development below. Pushbuttons with guard is not available. Extended pushbutton is available with momentary operation only.
- Flush ring-illuminated style is available. See Part Number Development below (③). Guard is not available with flush ring-illuminated style.
- 5V DC and 12V AC/DC LED operating voltages also available.
- Other bezel sizes available (LB series). For details, see **B-075**.

Part Number Development

LBW ① L - ② ③ T ④ ⑤ ⑥ *

① Shape

Code	Shape
6	Round / Black Bezel
7	Square / Black Bezel
6M	Round / Metallic Bezel
7M	Square / Metallic Bezel
6G	Round with Guard
7G	Square with Guard

② Operation

Code	Operation
A	Maintained
M	Momentary

③ Operator Style

Code	Operator Style
1	Flush
2	Extended
1R	Flush Ring-illuminated

- Extended style is available only for round (black/metallic bezel) and in momentary operation.
- Guard model is not available for Flush Ring-illuminated types. Also, Y (yellow) is not available.

④ Contacts

Code	Contact
1	Gold/SPDT
2	Gold/DPDT
5	Silver/SPDT
6	Silver/DPDT

⑤ LED Operating Voltage

Code	Rated Operating Voltage
1	5V DC
3	12V AC/DC
4	24V AC/DC

⑥ Others

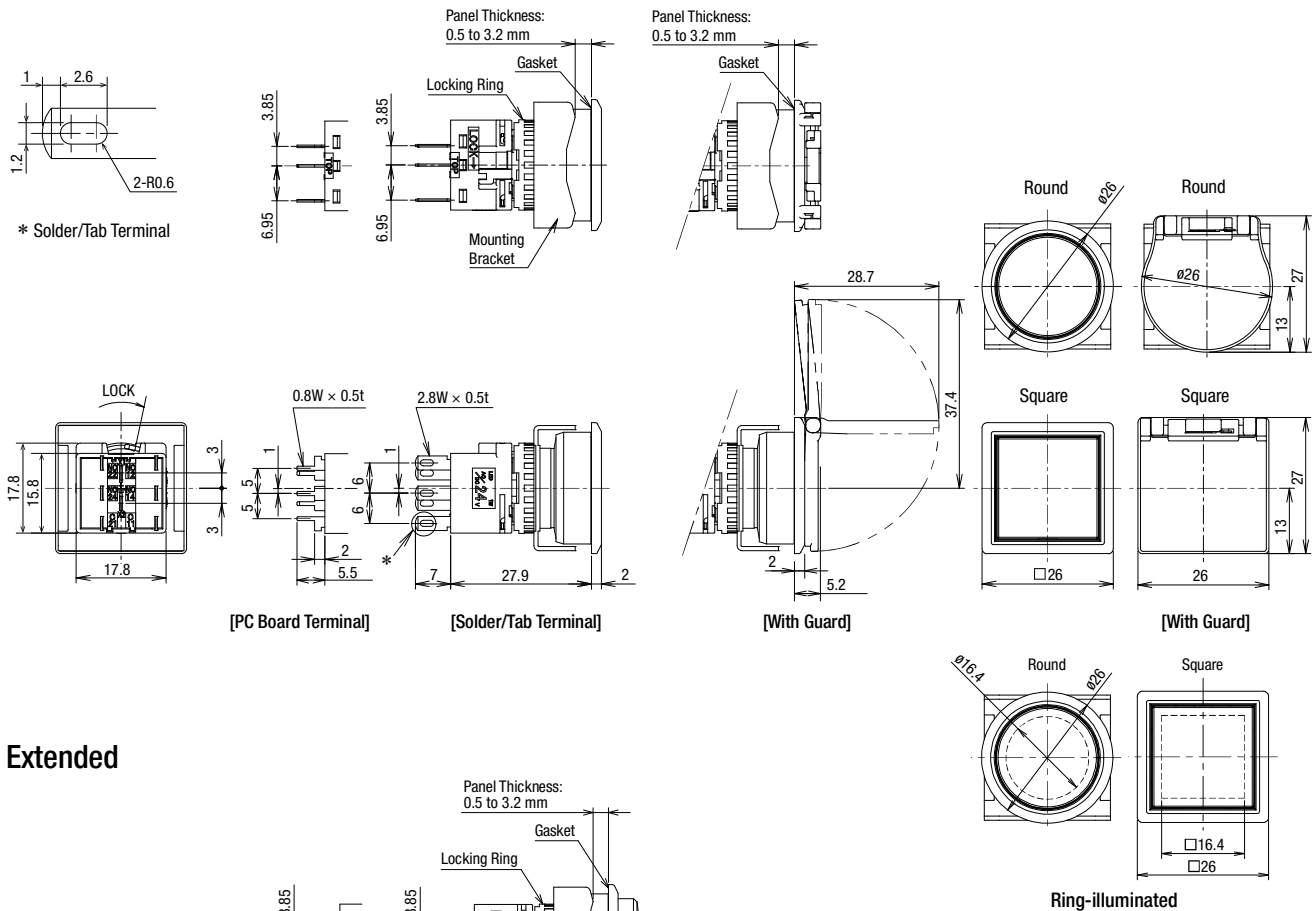
Code	Specification	Part No. Example
Blank	Solder/Tab Terminal	—
V	PC Board Terminal (Gold Contact Only)	LBW6L-M1T14V*

- Specify the color code in place of * in the table above.

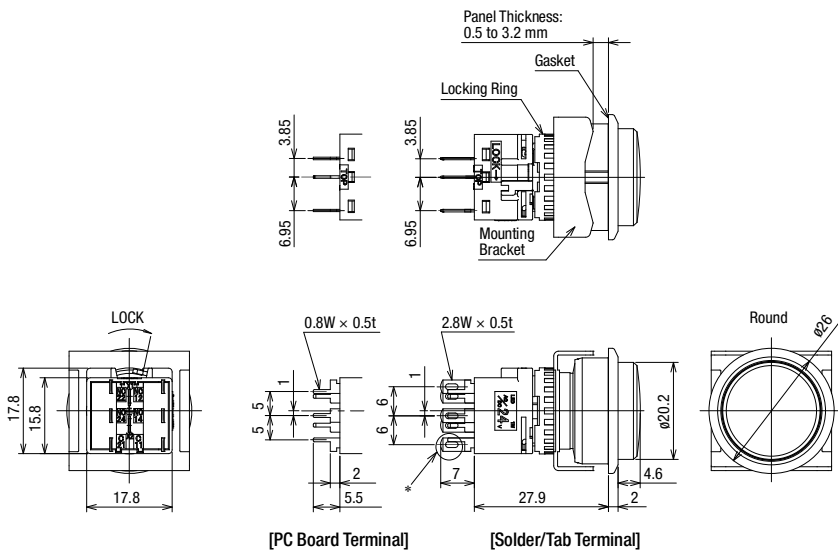
Dimensions

All dimensions in mm.

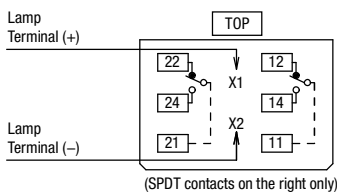
Flush/Ring-illuminated



Extended

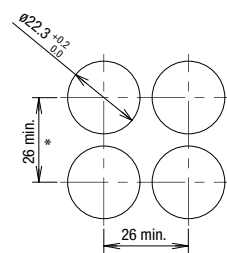


Terminal Arrangement (Bottom View)

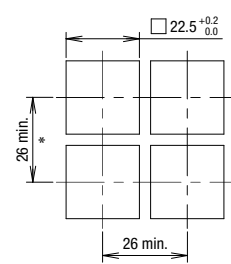


Mounting Hole Layout

Round (LBW6/LBW6M)



Square (LBW7/LBW7M)



- For details on pc board and circuit design, see B-121.
- For details on single board mounting, see B-122.

*: 53 mm minimum for switches with guard.

APEM

Switches & Pilot Lights

Control Boxes

Emergency Stop Switches

Enabling Switches

Safety Products

Explosion Proof

Terminal Blocks

Relays & Sockets

Circuit Protectors

Power Supplies

LED Illumination

Controllers

Operator Interfaces

Sensors

AUTO-ID

Flush Silhouette

$\phi 16$

$\phi 22$

$\phi 30$

Miniature

Pilot Lights

CW

LW-F

LB

LBW

UP

Flush Bezel