

TeSys Control

K Contact blocks - Time delays

Product references



LA1KN22



LA1KN3



LA1KN7



Control relays



LA2KT2E

Instantaneous auxiliary contact blocks

Clip-on front mounting, 1 per control relay

Connection	Composition		Reference	
Screw clamp terminals		–	LA1KN20	
		2	LA1KN02	
		1	LA1KN11	
		–	LA1KN40 ⁽¹⁾	
		1	LA1KN31 ⁽¹⁾	
		2	LA1KN22 ⁽¹⁾	
		3	LA1KN13 ⁽¹⁾	
		–	LA1KN04 ⁽¹⁾	
	Spring terminals		–	LA1KN203
			2	LA1KN023
		1	LA1KN113	
		–	LA1KN403 ⁽¹⁾	
		1	LA1KN313 ⁽¹⁾	
		2	LA1KN223 ⁽¹⁾	
		3	LA1KN133 ⁽¹⁾	
		–	LA1KN043 ⁽¹⁾	
Faston connectors 1 x 6.35 or 2 x 2.8			–	LA1KN207
			–	LA1KN407 ⁽¹⁾
		1	LA1KN317 ⁽¹⁾	

Electronic time delay contact blocks

- Relay output with common point changeover contact, ~ or ≍ 240 V, 2 A maximum
- Control voltage 0.85...1.1 Uc
- Maximum switching capacity 250 VA or 150 W
- Operating temperature -10...+ 60 °C
- Reset time: 1.5 s during the time delay period 0.5 s after the time delay period

Clip-on front mounting, 1 per control relay

Voltage	Type	Timing range	Composition	Reference
V		s		
~ or ≍ 24...48	On-delay	1...30	1	LA2KT2E
~ 110...240	On-delay	1...30	1	LA2KT2U

Other versions

Electronic timers type RE4.
Please consult your Regional Sales Office.

⁽¹⁾ Block of 4 contacts for use on CA2K and CA3K.

TeSys Control

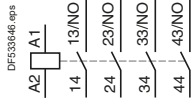
K Control relays

Schemes

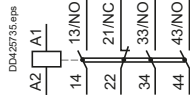
Control relays

CA2K, CA3K, CA4K

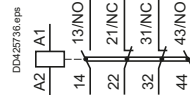
4 N/O



3 N/O + 1 N/C

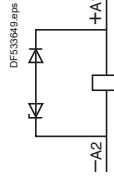


2 N/O + 2 N/C

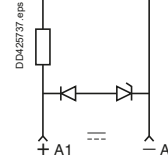


With integral suppression device

CA3K



CA4K

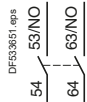


Instantaneous auxiliary contact blocks LA1K

For CA2K, CA3K, CA4K

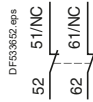
2 N/O

LA1KN20, LA1 KN207



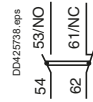
2 N/C

LA1KN02, LA1 KN027



1 N/O + 1 N/C

LA1KN11, LA1 KN117



For CA2K, CA3K

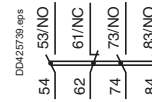
4 N/O

LA1KN40, LA1 KN407



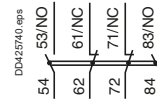
3 N/O + 1 N/C

LA1KN31, LA1 KN317



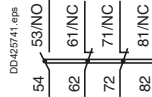
2 N/O + 2 N/C

LA1KN22



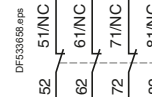
1 N/O + 3 N/C

LA1KN13



4 N/C

LA1KN04

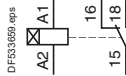


Electronic time delay contact blocks LA2KT

For CA2K, CA3K, CA4K

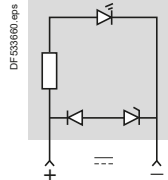
1 C/O

LA2KT2

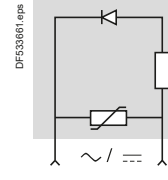


Suppressor modules

LA4KC



LA4KE



Ref.



Control relays

TeSys Control

K Contactors - Auxiliary contacts blocks

Product references



LA1KN22



LA1KN223



LA1KN407

Instantaneous auxiliary contact blocks

Recommended for standard applications. Clip-on front mounting, 1 block per contactor

Connection	For use on contactors	Composition	Reference
Screw clamp terminals	All products with screw clamp terminals	2 –	LA1KN20
		– 2	LA1KN02
		1 1	LA1KN11
	All products with screw clamp terminals except low consumption	4 –	LA1KN40
		3 1	LA1KN31
		2 2	LA1KN22
Spring terminals	All products with spring terminals	1 3	LA1KN13
		– 4	LA1KN04
		2 –	LA1KN203
	All products with spring terminals except low consumption	– 2	LA1KN023
		1 1	LA1KN113
		4 –	LA1KN403
Faston connectors, 1 x 6.35 or 2 x 2.8	All products with Faston connectors	3 1	LA1KN313
		2 2	LA1KN223
		1 3	LA1KN133
	All products with Faston connectors except low consumption	– 4	LA1KN043
		2 –	LA1KN207
		4 –	LA1KN407
3 1	LA1KN317		

With terminal referencing to standard EN 50012. Clip-on front mounting, 1 block per contactor

Screw clamp terminals with referencing conforming to standard EN 50012	All 3-pole + N/O products with screw clamp terminals except LP4 and LP5K12	– 2	LA1KN02M
	All 3-pole + N/O products with screw clamp terminals except LP4 or LP5K06, K09 and K12	1 1	LA1KN11M
	All 3-pole + N/O products with screw clamp terminals except LP4 or LP5K06, K09 and K12	3 1	LA1KN31M
		2 2	LA1KN22M

Electronic time delay auxiliary contact blocks

Relay output with common point changeover contact, ~ or ≍ 240 V, 2 A maximum.

Control voltage 0.85...1.1 Uc.

Maximum switching capacity 250 VA or 150 W.

Operating temperature -10...+60 °C.

Reset time: 1.5 s during the time delay period, 0.5 s after the time delay period.

Clip-on front mounting, 1 block per contactor

Voltage	Type	Timing range	Composition	Reference
V		s		
~ or ≍ 24...48	On-delay	1...30	1	LA2KT2E
~ 110...240	On-delay	1...30	1	LA2KT2U



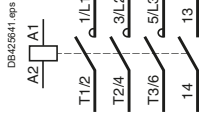
TeSys Control

K Contactors

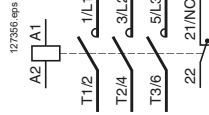
Schemes

3-pole contactors

3 P + N/O

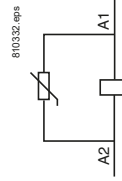


3 P + N/C

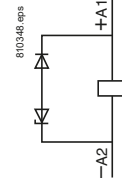


With integral suppression device

LC7K

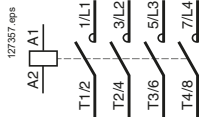


LP4K

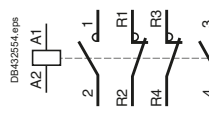


4-pole contactors

4 P

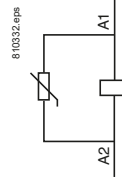


2 P N/O + 2 P N/C

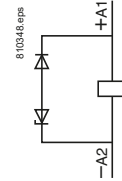


With integral suppression device

LC7K



LP4K



Instantaneous auxiliary contacts LA1K

LA1KN20, KN207, KN203

2 N/O



LA1KN02, KN027, KN023

2 N/C



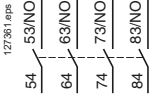
LA1KN11, KN117, KN113

1 N/O + 1 N/C



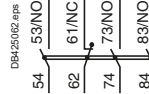
LA1KN40, KN407, KN403

4 N/O



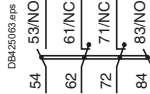
LA1KN31, KN317, KN313

3 N/O + 1 N/C



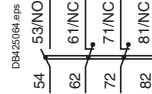
LA1KN22, KN227, KN223

2 N/O + 2 N/C



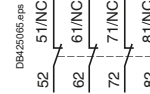
LA1KN13, KN137, KN133

1 N/O + 3 N/C



LA1KN04, KN047, KN043

4 N/C



Terminal referencing conforming to standard EN 50012

LA1KN02M

2 N/C



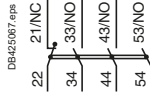
LA1KN11M

1 N/O + 1 N/C



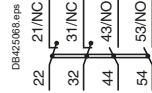
LA1KN31M

3 N/O + 1 N/C



LA1KN22M

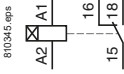
2 N/O + 2 N/C



Electronic time delay contact blocks

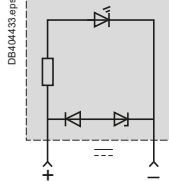
LA2KT

1 C/O

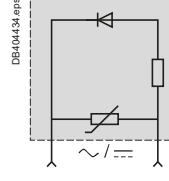


Suppressor modules

LA4KC



LA4KE



TeSys Control

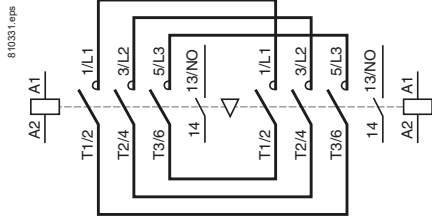
K Reversing contactors

Schemes

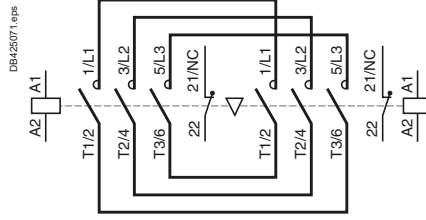
3-pole reversing contactors

With screw clamp connections

3 P + N/O



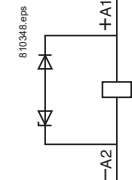
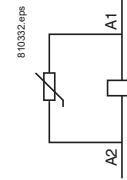
3 P + N/C



With integral suppression device

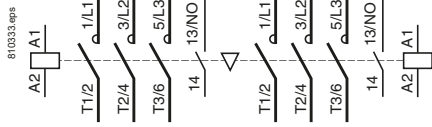
LC8K

LP5K

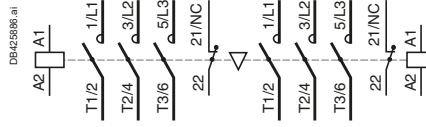


With Faston connectors or solder pins (printed circuit board)

3 P + N/O



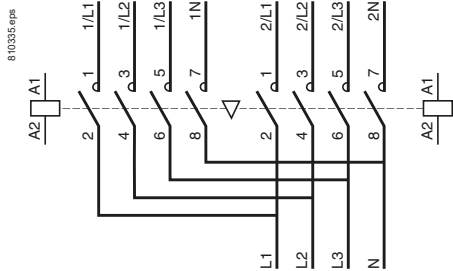
3 P + N/C



4-pole reversing contactors

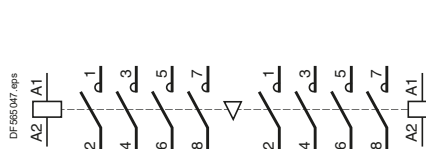
With screw clamp connections

4 P



With Faston connectors or solder pins (printed circuit board)

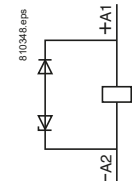
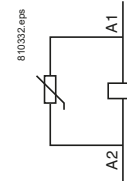
4 P



Integral suppression device

LC8K

LP5K



Instantaneous auxiliary contacts LA1K

Terminal referencing conforming to standard EN 50012

LA1KN20, KN207, KN203

LA1KN02, KN027, KN023

LA1KN11, KN117, KN113

LAKN02M

LA1KN11M

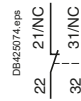
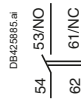
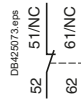
2 N/O

2 N/C

1 N/O + 1 N/C

2 N/C

1 N/O + 1 N/C



LA1KN40, KN407, KN403

LA1KN31, KN317, KN313

LA1KN22, KN227, KN223

LAKN13, KN137, KN133

LA1KN04, KN047, KN043

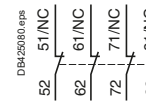
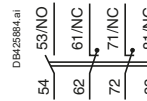
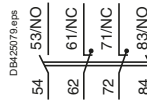
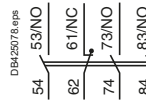
4 N/O

3 N/O + 1 N/C

2 N/O + 2 N/C

1 N/O + 3 N/C

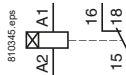
4 N/C



Electronic time delay contact blocks

LA2KT

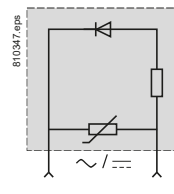
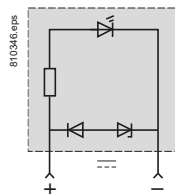
1 C/O



Suppressor modules

LA4KC

LA4KE



References:
pages B8/8 to B8/11

Characteristics:
pages B8/72 to B8/75

Dimensions:
page B8/78

