



for a greener tomorrow

**MITSUBISHI  
ELECTRIC**  
*Changes for the Better*

FACTORY AUTOMATION

Graphic Operation Terminal

**e-Factory**

# GOT2000 Series

Compact body, **clear** and **bright** display

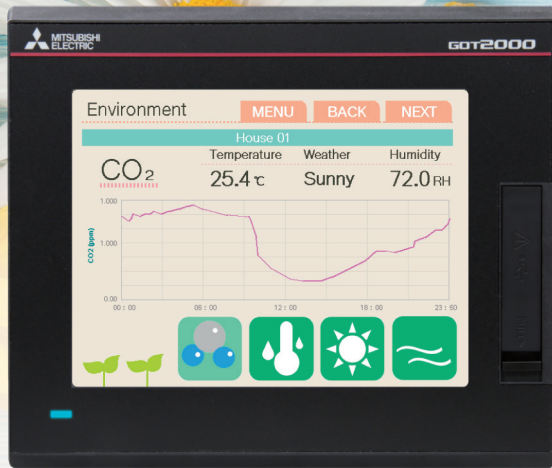


GT25 model 5.7-inch type debut!

**New** GT2505-VTBD

# GOT2000

Graphic Operation Terminal



## Various functions of GT25 are available along with the same functions as GT14

VGA 640 × 480 dots	TFT 65536 colors	24 V DC power
SD memory card slot	Operation memory (RAM) 80MB	USB host & USB device

### GT2505-VTBD recommended functions

Ethernet	CC-Link IE Field Basic
RS-232	RS-422/485



### 01 GOT Mobile function



Via GOT at the production site, connected devices can be monitored from multiple information devices (clients) such as computers and tablets in a remote location. You can check the production in a timely manner and take necessary actions immediately. Just display the production status on a large monitor, and you can easily implement an ANDON system.

- \* A separate license (GT25-WEBSKEY) is required.
- \* A browser (Google Chrome or Safari) is required on the client.
- \* Up to five clients can connect to one GOT at the same time.
- \* An access point is required separately because the wireless LAN communication unit cannot be used with GT2505.



For the details, please refer to the GOT Smart Web-based Remote Solutions (L(NA)08416ENG).

### 02 Drive recorder



GOT can be used to display the screen equivalent to the drive recorder of MR Configurator2. Easily check the servo data (motor current, position command, etc.) on GOT without using a personal computer.

Drive recorder information list screen



Graph waveform screen



Store the data on the GOT's SD memory card or USB memory, and check and analyze in your office.

### 03 System launcher/ System launcher (servo network)

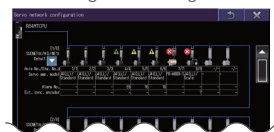


A graphical configuration diagram of programmable controller and servo systems indicates module statuses.

System configuration diagram



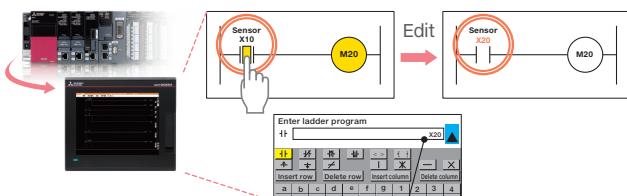
Servo network configuration diagram



Icons show the module status. You can check the module with an error at a glance.

### 04 Sequence program monitor (Ladder)/(iQ-R ladder)

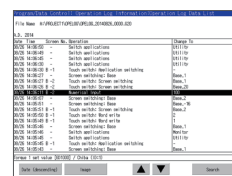
When an error occurs, GOT can monitor and edit a sequence program in a controller in the ladder format, and also can change current values of devices. There is no need for a personal computer.



Change the device number from X10 to X20.

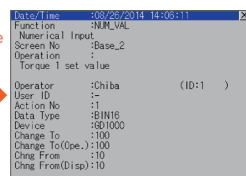
### 05 Operation log

GOT records all the operations performed by operators. Checking the recorded operation history helps you to identify and analyze the cause of the error occurred due to improper operations, leading to making improvements, preventing reoccurrence, and enhancing traceability.



Check the brief information of the log in a list

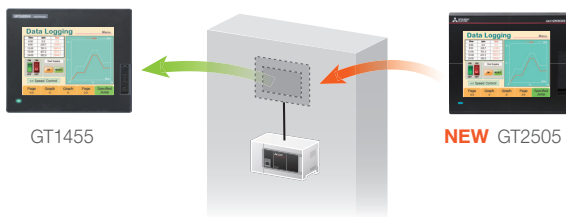
For more details



Check the detailed information of the log

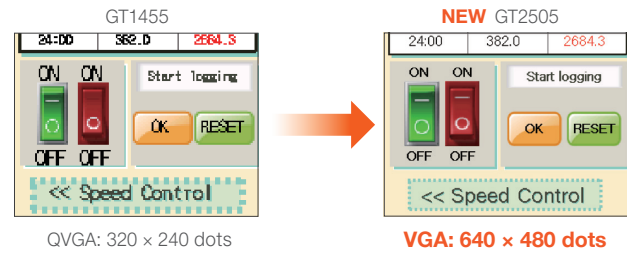
## Panel cut dimensions compatible with existing models

Easy to replace GT14 models because of the same panel cut dimensions.

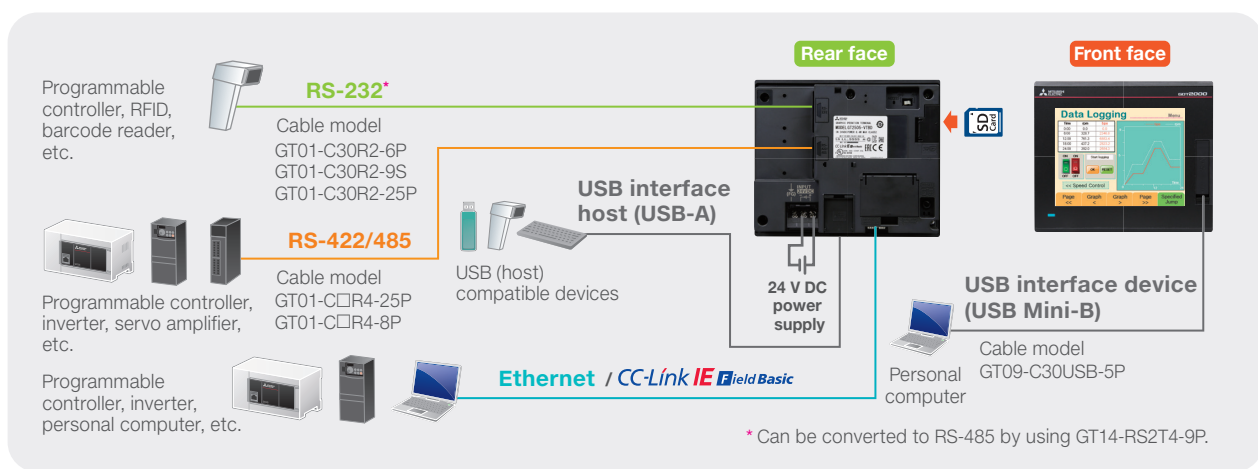


## Clear display with 4 times higher resolution

Higher resolution while keeping the screen size the same as GT14 models. 640 × 480 dots high resolution LCD displays clear characters.



## GT2505 system configuration



## GOT2000 Series 5.7-inch models functions list

Item		GT2705	GT2505	GT1455
Hardware specifications	Memory			
	Memory for storage (ROM)	32 MB	32 MB	9 MB
	Memory for operation (RAM)	80 MB	80 MB	—
	SRAM user area/D drive	●/—	●/—	●/●
	Ethernet/CC-Link IE Field Basic	●/●	●/●	●/—
USB host/USB device	●/●	●/●	●/●	
Extension interface/Side interface	●*2	—	—	
Touch panel simultaneous press (two points)	●	—	—	
Vertical display*1	Rotate 90° to left	Rotate 90° to right	Rotate 90° to right	
Functions	Recipe display (record list)	●	●	—
	Document display	Memory	●	●
	Historical trend graph	(Memory)	●	●
	Logging	(Memory) (Battery)	●	●
	GOT Mobile function	License (Memory)	●	●
	VNC server function	License	●	●
	Remote personal computer operation function (Ethernet)	License	●	●
	Sound output function	Unit	●	—
	MES interface function	License (Memory)	●	●
	Wireless LAN function	Unit	●	—
Operation log	Memory	●	●	

Unit	Option unit required	License	License required
Memory	SD memory card or USB memory required		
Battery	Battery required		
( )	Required depending on conditions of use		

Item		GT2705	GT2505	GT1455
KANA KANJI conversion		●	●	●
Backup/Restoration	Memory	●	●	●
FA transparent		●	●	●
Multi-channel function	(Unit)	●*3 4 channels	●*4 4 channels	●*4 2 channels
Multiple GOT connection		—	—	●
SoftGOT-GOT link	License	●	●	—
Gesture function		●	—	—
Sequence program monitor (Ladder) / (IQ-R ladder)	Memory	●	●	—
Sequence program monitor (SFC)	Memory	●	●	—
Network monitor		●	●	—
CC-Link IE Field Network diagnostics		●	●	—
Drive recorder	GOT Drive® (Memory)	●	●	—
Servo amplifier monitor	GOT Drive®	●	●	—
R/Q motion monitor	GOT Drive®	●	●	—
Log viewer	(Memory)	●	●	—
System launcher		●	●	—
System launcher (servo network)	GOT Drive®	●	●	—

\*1 Remote personal computer operation function (Ethernet) cannot be used. The following screens are displayed horizontally: utility screen, monitor and data management screens that are displayed from the utility screen (sequence program monitor, etc.). For the details of other GOT operations when placed vertically, please refer to the relevant product manual or the Help.

\*2 For the applicable option units, please refer to the Graphic Operation Terminal GOT2000 Series Catalog (L(NA)08270ENG) or the relevant product manual.

\*3 Up to three communication units can be installed on GT2705.

\*4 No communication units can be installed on GT2505 and GT1455.

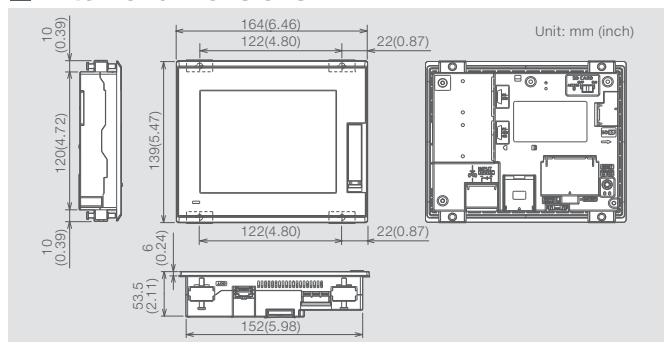
# GT2505-VTBD

## Performance specifications

Item	Specifications	
Display section <sup>1,2</sup>	Display device	TFT color LCD
	Screen size	5.7"
	Resolution	VGA: 640 x 480 dots
	Display size	115.2 (4.54) (W) x 86.4 (3.40) (H) mm (inch)
	Number of displayed characters	16-dot standard font: 40 characters x 30 lines (two-byte characters) 12-dot standard font: 53 characters x 40 lines (two-byte characters)
	Display color	65536 colors
	Brightness adjustment	32 levels
Touch panel <sup>3</sup>	Backlight	LED (not replaceable)
	Backlight life <sup>4</sup>	Approx. 60000 h (operating ambient temperature: 25 °C, display intensity: 50%)
	Type	Analog resistive film
	Key size	Minimum 2 x 2 dots <sup>8</sup> (per key)
	Simultaneous press	Not available <sup>9</sup> (Only 1 point can be touched.)
Life	1 million touches or more (operating force: 0.98 N or less)	
Panel color	Black	
User memory	User memory capacity	Memory for storage (ROM): 32 MB Memory for operation (RAM): 80 MB
	Life (number of write times)	100000 times
Built-in clock precision	±90 seconds/month (ambient temperature: 25 °C)	
Battery		GT11-50BAT lithium battery
	Life	Approx. 5 years (ambient temperature: 25 °C)
Built-in interface	RS-232	1 channel Transmission speed: 115200, 57600, 38400, 19200, 9600, 4800 bps Connector shape: D-sub 9-pin (male)
	RS-422/485	1 channel Transmission speed: 115200, 57600, 38400, 19200, 9600, 4800 bps Connector shape: D-sub 9-pin (female)
	Ethernet	1 channel Data transfer method: 100BASE-TX, 10BASE-TX Connector shape: RJ-45 (modular jack)
	USB (host)	1 channel (rear face) Maximum transfer rate: High-Speed 480 Mbps Connector shape: USB-A
	USB (device)	1 channel (front face) Maximum transfer rate: High-Speed 480 Mbps Connector shape: USB Mini-B
	SD memory card	1 channel, SDHC compliant (maximum 32 GB)
	Extension interface	—
Side interface	—	
Buzzer output	Single tone (tone and tone length adjustable)	
POWER LED	2 colors (blue and orange)	
Protective structure <sup>6</sup>	Front: IP67F <sup>7,9</sup> Inside control panel: IP2X	
Safety standards, radio laws (as of August 2017)	CE, UL, cUL, EAC, KC	
External dimensions	164 (6.46) (W) x 139 (5.47) (H) x 53.5 (2.11) (D) mm (inch)	
Panel cut dimensions	153 (6.02) (W) x 121 (4.76) (H) mm (inch)	
Weight (excluding a fitting)	0.6 (1.3) kg (lb)	
Compatible software package	GT Works3 Version1.180N or later	

- <sup>1</sup> As a characteristic of liquid crystal display panels, bright dots (always lit) and dark dots (never lit) may appear on the panel. Since liquid crystal display panels comprise a great number of display elements, the appearance of bright and dark dots cannot be reduced to zero. Individual differences in liquid crystal display panels may cause differences in color, uneven brightness and flickering. Note that these phenomena are characteristics of liquid crystal display panels and it does not mean the products are defective or damaged.
- <sup>2</sup> Flickering may occur due to vibration, shock, or the display colors.
- <sup>3</sup> When a stylus is used, the touch panel has a life of 100 thousand touches. The stylus must satisfy the following specifications. • Material: polycarbonate resin • Tip radius: 0.8 mm or more
- <sup>4</sup> To prevent the display section from burning in and lengthen the backlight life, enable the screen save function and turn off the backlight.
- <sup>5</sup> If you touch two points or more simultaneously on the touch panel, a touch switch near the touched points may operate unexpectedly. Do not touch two points or more simultaneously on the touch panel.
- <sup>6</sup> Note that the structure does not guarantee protection in all users' environments. The GOT may not be used in certain environments where it is subjected to splashing oil or chemicals for a long period of time or soaked in oil mist.
- <sup>7</sup> To conform to IP67F, close the USB environmental protection cover by pushing the [PULL] mark firmly. (The GOT conforms to IP2X when the USB environmental protection cover is open.)
- <sup>8</sup> The minimum size of a key that can be arranged. To ensure safe use of the product, the following settings are recommended. • Key size: 16 x 16 dots or larger • Distance between keys: 16 dots or more
- <sup>9</sup> The suffix "F" of IP67F is a symbol that indicates protection rate against oil. It is described in the Appendix of Japanese Industrial Standard JIS C 0920.

## External dimensions



The release date varies depending on the product and your region. For details, please contact your local sales office.

The actual color may differ slightly from the pictures in this catalog. The actual display may differ from what are shown on GOT screen images.

## General specifications

The same as GT25 models. For the details, please refer to the GT25 General Description (IB(NA)-0800537(ENG)) or the Graphic Operation Terminal GOT2000 Series Catalog (L(NA)08270(ENG)).

## Power supply specifications

Item	Specifications	
Power supply voltage	24 V DC (+10%, -15%)	
Power consumption	Under the maximum load	8.4 W or less
	Main unit	4.3 W
	Main unit (backlight OFF)	2.6 W
Inrush current	42 A or less (2 ms, ambient temperature: 25 °C, under the maximum load)	
Permissible instantaneous power failure time	10 ms or less	
Noise immunity	Noise voltage: 1000 Vp-p, noise width: 1 μs, measured by a noise simulator with noise frequency ranging from 30 Hz to 100 Hz	
Withstand voltage	500 V AC for 1 minute across power terminals and earth	
Insulation resistance	500 V DC across power terminals and earth, 10 MΩ or more by an insulation resistance tester	

## Product list

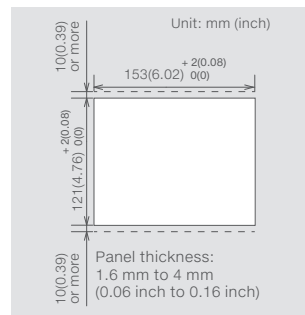
Classification	Model	Specifications, remarks
GOT	GT2505-VTBD	Display: 5.7" VGA, TFT color LCD: 65536 colors, Panel color: black, Power supply: 24 V DC
RS-232/485 signal conversion adapter	GT14-RS2T4-9P	For connecting the RS-232 (D-sub 9-pin connector) and RS-485 (terminal block)
Protective sheet	GT25-05PSGC-2	Antiglare type, Transparent, With a hole for the USB environmental protection cover, A set of 5 sheets
	GT25-05PSCC-2	Clear type, Transparent, With a hole for the USB environmental protection cover, A set of 5 sheets
USB environmental protection cover	GT21-WUCOV	Environmental protection cover for the USB interface on the GOT front face (for replacement)
Stand	GT05-50STAND	For 5.7"
SD memory card	NZ1MEM-2GBSD	SD memory card for GOT, 2 GB
	NZ1MEM-4GBSD	SDHC memory card for GOT, 4 GB
	NZ1MEM-8GBSD	SDHC memory card for GOT, 8 GB
	NZ1MEM-16GBSD	SDHC memory card for GOT, 16 GB
Battery	GT11-50BAT	Battery for backup of SRAM data, clock data, and system status log data (for replacement)
Panel-mounted USB port extension	GT14-C10EXUSB-4S	Cable length: 1m, for routing the USB port (host) of the GOT rear face to the front side of the control panel
HMI/GOT Screen Design Software MELSOF GT Works3	SW1DND-GTWK3-E	English Version, standard license product <sup>1</sup> , DVD-ROM
GOT Mobile Function License <sup>2</sup>	GT25-WEBSKEY-1	1 license

<sup>1</sup> Volume license product and additional license product are also available. For details, please contact your local sales office.

<sup>2</sup> 1 license is required for 1 GOT unit.

For inquiries relating to the latest status of conforming to various standards and laws (CE, UL, cUL, EAC, KC, and maritime certifications [ABS/BV/DNV GL/LR/NK/RINA]), please contact your local sales office.

## Panel cut dimensions Related materials



Graphic Operation Terminal GOT2000 Series Catalog (L(NA)08270(ENG))

### Precautions for safe use

To use the products given in this publication properly, always read the relevant manuals before beginning operation.

### Trademarks and registered trademarks

ETHERNET is a registered trademark of Xerox Corp.  
SD and SDHC Logos are registered trademarks or trademarks of SD-3C, LLC.  
Google Chrome is a trademark or registered trademark of Google Inc.  
Safari is a trademark of Apple Inc., registered in the U.S. and other countries.  
Other product and company names are either trademarks or registered trademarks of their respective owners.

# MITSUBISHI ELECTRIC CORPORATION

HEAD OFFICE: TOKYO BLDG., 2-7-3, MARUNOUCHI, CHIYODA-KU, TOKYO 100-8310, JAPAN  
NAGOYA WORKS: 1-14, YADA-MINAMI 5, HIGASHI-KU, NAGOYA, JAPAN

### Country/Region Sales office

USA .....+1-847-478-2100  
Mexico .....+52-55-3067-7511  
Brazil .....+55-11-4689-3000  
China .....+86-21-2322-3030  
Taiwan .....+886-2-2299-2499  
Korea .....+82-2-3660-9530

Singapore .....+65-6473-2308  
Thailand .....+66-2682-6522 to 31  
Indonesia .....+62-21-3192-6461  
Vietnam .....+84-8-3910-5945  
India .....+91-20-2710-2000  
Australia .....+61-2-9684-7777

Germany .....+49-2102-486-0  
UK .....+44-1707-28-8780  
Italy .....+39-039-60531  
Spain .....+34-935-65-3131  
France .....+33-1-55-68-55-68  
Czech .....+420-251-551-470

Turkey .....+90-216-526-3990  
Poland .....+48-12-347-65-00  
Russia .....+7-812-633-3497  
South Africa .....+27-11-658-8100