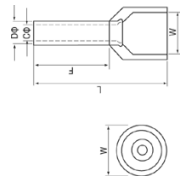


**CORD-END TERMINALS (E)**

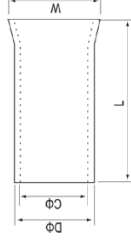


**Insulation:** P.P **Metal:** Copper or Brass

CE/RoHS

Wire Range mm2 (A.W.G.)	Item No.	Dimension(mm)					Pcs/ Pack	Insulating tube color		
		F	L	W	Dφ	Cφ		German	French	
0.5(22)	E 0508	8.0	14.0	2.6	1.3	1.0	1000	Orange	White	White
0.75(20)	E 7508	8.0	14.6	2.8	1.5	1.2	1000	White	Blue	Blue
1.0(18)	E 1508	8.0	14.6	3.0	1.7	1.4	1000	Yellow	Red	Red
1.5(16)	E 1508	8.0	14.6	3.5	2.0	1.7	1000	Red	Black	Black
2.5(14)	E 2508	8.0	15.2	4.0	2.6	2.3	1000	Blue	Gray	Gray
4.0(12)	E 4009	9.0	16.5	4.4	3.2	2.8	1000	Gray	Orange	Orange
6.0(10)	E 6012	12.0	20.0	6.3	3.9	3.5	1000	Black	Green	Green
10.0(7)	E 10-12	12.0	21.5	7.6	4.9	4.5	1000	Milk	Brown	Brown
16.0(5)	E 16-12	12.0	22.2	8.8	6.2	5.8	500	Green	Milk	Milk
25.0(4)	E 25-16	16.0	29.0	11.2	7.9	7.5	250	Brown		
	E 25-22	22.0	35.0							
35.0(2)	E 35-16	16.0	30.0	12.7	8.7	8.3	250	Gray		
50.0(1)	E 50-25	25.0	41.0	15.3	10.9	10.3	250	Olive		

**CORD-END TERMINALS (EN)**



**Insulation:** Copper or Brass  
**Plating:** Tin  
**Material:** Copper or brass  
**Range size (mm²):** 0.5 - 6

Welding connector with copper material only

Wire Range mm2 (A.W.G.)	Item No.	Dimension (mm)					Pcs/Pack
		L	Dφ	Cφ	W		
0.5(22)	EN 0508	8	1.3	1	1.7	10000	
0.75(20)	EN 7508	8	1.5	1.2	1.9	10000	
1.0(18)	EN 1008	8	1.7	1.4	2.2	10000	
1.5(16)	EN1508	8	2	1.7	2.5	10000	
2.5(14)	EN 2508	8	2.6	2.3	3.3	10000	
4.0(12)	EN 4009	9	3.2	2.8	3.9	5000	
6.0(10)	EN 6012	12	3.9	3.5	4.8	5000	
10.0(7)	EN 10-12	12	4.9	4.5	5.8	2500	
16.0(5)	EN 16-12	12	6.2	5.8	7.2	2000	
25.0(4)	EN 25-16	16	7.9	7.5	9.1	1000	
	EN 25-22	22					
35.0(2)	EN 35-16	16	8.7	8.3	10.2	500	
50.0(1)	EN 50-25	25	10.9	10.3	12.4	500	