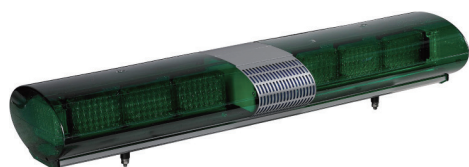


ELML

Warning Lights for Road Safety (Max 126dB)



Various combinations of sizes, color, and light source depending on the application needs



ELML

ELML LED Strobe Warning Light Bar

- Adjustable size depending on the type of vehicle and application needs
- Can select from a xenon or LED light source for your various application needs
- Suitable for tow trucks, patrol cars and parking lots
- Designed in a structure which allows for quick assembly and disassembly for convenient light source replacement
- Adopts LED strobe system that emits flashing light for excellent visibility
- Enhanced outdoor visibility with use of independent LED diffusion lenses coupled with the LED backlighting system
- Flashing rate : 60-80 flashes/min
- Built-in speaker, volume : Max 126dB at 1m
- Standard color arrangements :
 - Blue-Red
 - Red-Red
 - Amber-Amber
 - Green-Green
- Customized color arrangements available
- Materials : Lens/ Housing-PC, Reflector-Heat resistant ABS, Board-AI
- Protection rating : IP56
- Modular design allows user defined color arrangement if necessary

Model number	LED module number	Voltage / Current (Based on 3 layers)	Certificate	Weight (Based on 3 layers)	Color
ELML-1	2EA	DC12V / 1.000A DC24V / 0.555A	-	11.02kg	<ul style="list-style-type: none"> • B-R • R-R • A-A • G-G
ELML-2	4EA				
ELML-3	6EA				
ELML-4	8EA				
ELML-5	10EA				

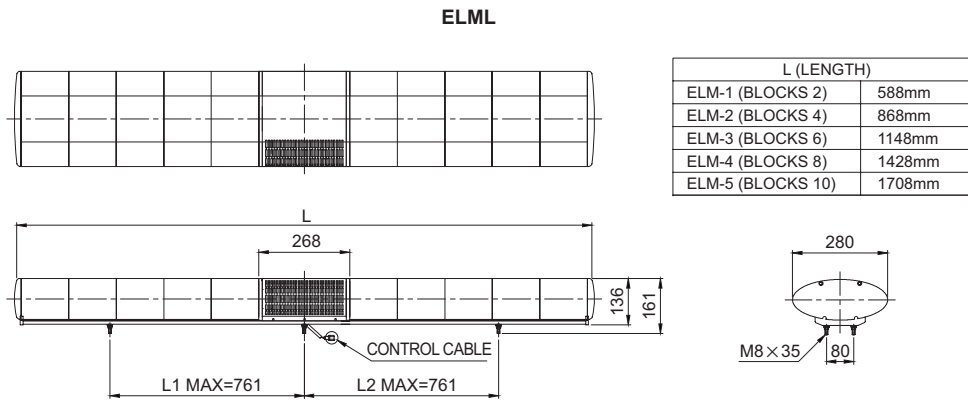
Ordering Specification

ELML	-	4	-	12	-	B/R	-	SAMP
[Model number]		[Layer]		[Voltage]		[Color]		[AMP]
• ELML		• 1-1layer • 2-2layers • 3-3layers • 4-4layers • 5-5layers		• 12-DC12V • 24-DC24V		• B/R ● Blue-Red • R/R ● Red-Red • A/A ● Amber-Amber • G/G ● Green-Green		• None • - No AMP • SAMP • -AMP included



Technical Diagram

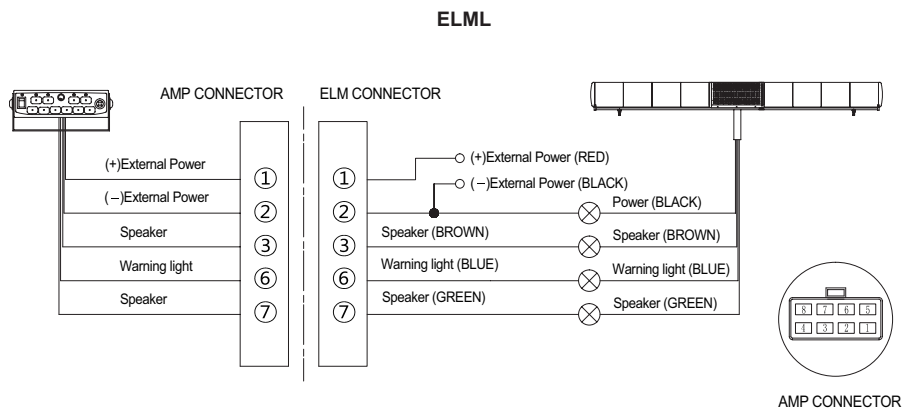
(Units : mm)



• Power line specification - ICE57 (0.75sq) x 4C 3m



Wiring Instructions



Warning/
Signal/
Stackable



Signal &
Electric Horn/
Speakers



Vessels and
Heavy-Duty
Equipment



Explosion
Proof



Warning
Light Bar



Aviation
Obstruction
Lights



Signal Tower
Lights



USB/ETN
Signal Tower
Lights



Wireless
Network
System



Electric Horn/
Speakers



Industrial
LED Lights

ELM-SOL

Solar Powered Warning Light Bar



Solar powered warning light bar for road safety

- Semi-permanent lifetime by adopting high brightness LED
- Solar powered design does not require a power system (Built-in rechargeable battery)
- Built-in SUN switch activates a system that automatically operates the product when darkness is detected
- Operates for 96 hours upon full charge
- Flashing rate : 60-80 flashes/min



Specifications

Model number	Battery voltage	Battery capacity	Running time	Certificate	Weight
ELM-SOL	12V	12Ah	96 hour	-	12.80kg

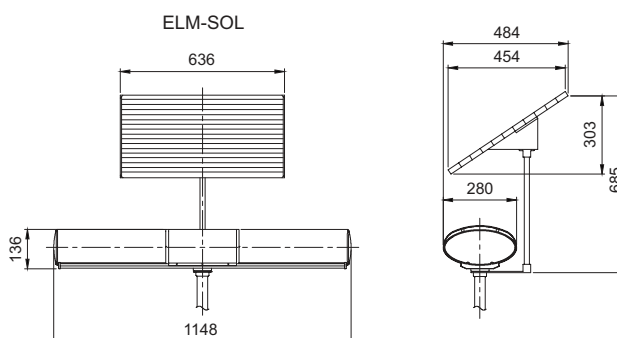


Technical Diagram

(Units : mm)



ELM-SOL



SAMP

Controllable AMP for Warning Light Bar

Signal sound AMP for ELV and ELM

- Simple linkage between sound signal and warning lights
- Clear and stable sound signal
- Built-in switch for emergency voice on the microphone
- Commonly applicable for ELV and ELM



Specifications

Model number	Voltage	Current	Sound pattern	Frequency/ Repeat time	Certificate	Weight
SAMP	DC12V DC24V	4.150A 1.870A	Fire	300-700Hz / 140cycle	-	1.09kg
			Emergency	350-750Hz / 14cycle		
			Ambulance	610-690Hz / 50cycle		
			Buzzer	2,200Hz		
			Horn sound	595Hz - 1,040Hz		



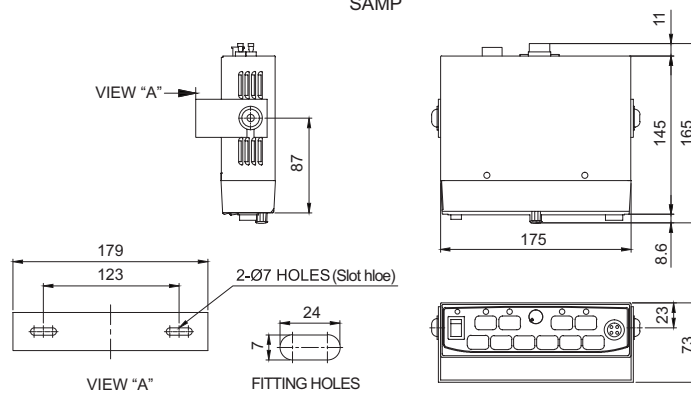
Technical Diagram

(Units : mm)



SAMP

SAMP



Ordering Specification

SAMP	-	12
[Model number]		[Voltage]
• SAMP		• 12-DC12V • 24-DC24V