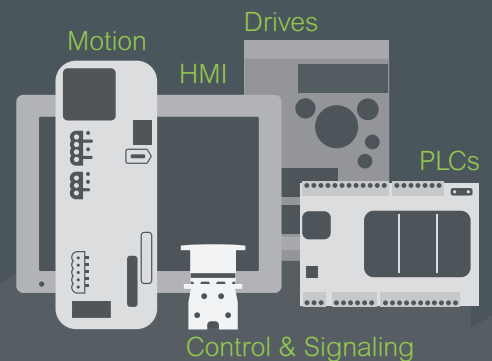




## Introducing the **Easy Series**

Essential automation & control products

*When just enough is just right!*



# Easy Harmony XA2

## Control and signaling

Ø 22 mm, plastic pushbuttons, switches and pilot lights



# Harmony

## Discover Harmony

Advanced operator interface and industrial relays

Harmony operator interface and industrial relays enhance operational efficiency and equipment availability across industrial and building applications. **Harmony** includes intelligent connected products and edge terminals that visualize, gather and process data, enabling informed operator decisions.

## Explore our offer

- [Harmony Push Buttons and Switches](#)
- [Harmony HMI Operator Terminals, IPC and EdgeBox](#)
- [Harmony Signaling Devices](#)
- [Harmony Electrical Relays](#)
- [Harmony Safety](#)

Life Is On

**Schneider**  
Electric

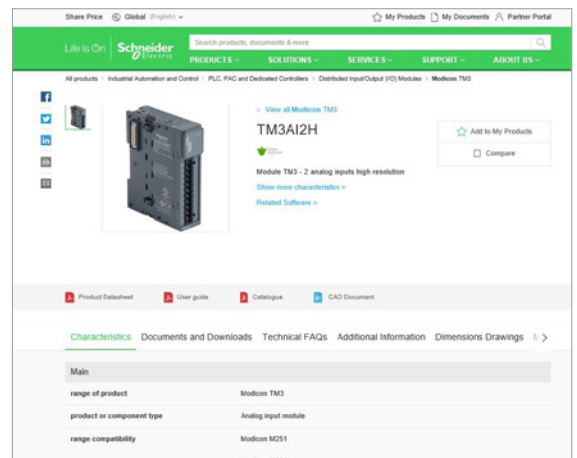
# Quick access to product information

## Get technical information about your product

References

**Modicon TM3**  
I/O expansion modules for Modicon controllers  
Analog I/O modules

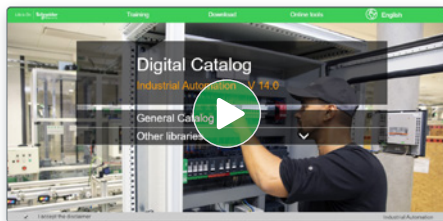
Number and type of channels	Input range	Output range	Resolution	Input terminal (Modicon)	Reference	Weight
2 enhancement inputs	-10...+10 VDC 0...20 mA, 4...20 mA	10 mA or 10 mA + sign	12 bits or 12 bits + sign	TER302	TM3AI2H	0,110
4 enhancement inputs	-10...+10 VDC 0...20 mA, 4...20 mA	10 mA or 10 mA + sign	12 bits or 12 bits + sign	TER304	TM3AI4H	0,130
4 enhancement or temperature inputs	-10...+10 VDC 0...20 mA, 4...20 mA PT100, RTD, Ni100, Ni200, Ni500, Ni1000, Pt100, Pt200	10 mA or 10 mA + sign	12 bits or 12 bits + sign	TER306	TM3AI4T	0,130
4 differential temperature inputs	-10...+10 VDC 0...20 mA, 4...20 mA PT100, RTD, Ni100, Ni200, Ni500, Ni1000, Pt100, Pt200	10 mA or 10 mA + sign	12 bits or 12 bits + sign	TER308	TM3AI4D	0,130
2 enhancement	-10...+10 VDC	10 mA or 10 mA + sign	12 bits or 12 bits + sign	TER310	TM3AI2S	0,110



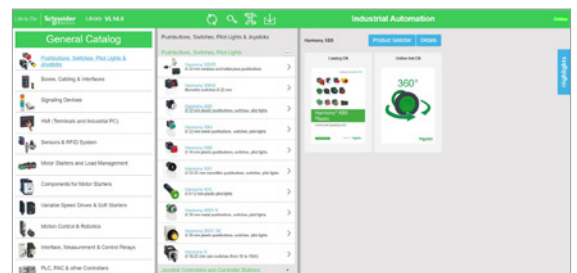
Each commercial reference presented in a catalog contains a hyperlink. Click on it to obtain the technical information of the product:

- Characteristics, Dimensions and drawings, Mounting and clearance, Connections and schemas, Performance curves
- Product image, Instruction sheet, User guide, Product certifications, End of life manual

## Find your catalog



- > With just 3 clicks, you can access the Industrial Automation and Control catalogs, in both English and French
- > Consult digital automation catalogs at [Digi-Cat Online](#)

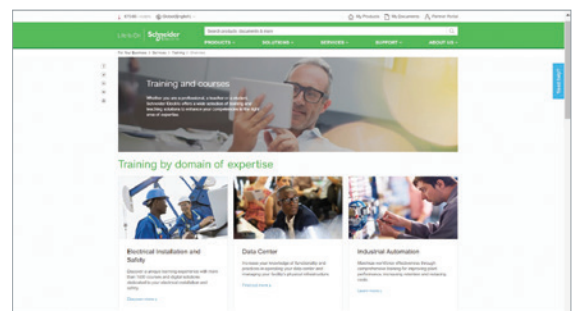


- Up-to-date catalogs
- Embedded product selectors, 360° pictures
- Optimized search by commercial references

## Select your training



- > Find the right [Training](#) for your needs on our Global website
- > Locate the training center with the selector tool, using this [link](#)



# General contents

## Harmony™ Easy XA2

■ General presentation.....	page 2
<b>Selection guide</b> .....	<b>page 4</b>
■ <b>General</b>	
□ Presentation .....	page 8
□ Description .....	page 9
■ <b>References</b>	
□ Spring return pushbuttons .....	page 12
□ Mushroom head pushbuttons, spring return .....	page 12
□ Pushbuttons, push-push.....	page 12
□ Double-headed pushbuttons, spring return.....	page 13
□ Emergency switching off pushbuttons, push-pull and turn to release.....	page 13
□ Selector switches, with standard handle or with long handle.....	page 14
□ Key switches.....	page 14
□ Illuminated pushbuttons, flush push with integral LED .....	page 15
□ Bulbs and associated accessories for illuminated pushbuttons .....	page 16
□ Contact functions for all XA2 pushbuttons and switches .....	page 16
□ Pilot lights .....	page 17
□ Indicators .....	page 18
□ Empty control stations .....	page 19
■ <b>Product reference index</b> .....	page 20



#### Easy Harmony XA2:

- modular, plastic pushbuttons and switches with metallic-look ring,
- complete, plastic pilot lights with integral LED

#### Fit for purpose

All the products composing the Easy Harmony XA2 range have been designed to be used in numerous control and signaling applications:

- > customers can easily select the key functions for standard applications
- > their diameter, Ø 22 mm /0.866 in. makes them suitable for standard OEM and panel builder applications.
- > with plastic material, they provide a solution for industrial applications demanding a high resistance to chemical agents.

#### Ease and comfort of choice

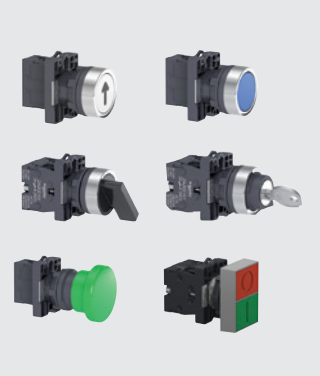
The range is available in the form of complete units. It involves:

- > modular, plastic pushbuttons and switches with metallic-look ring  
The modular design allows flexible and simple setup for complete products: the right product can be chosen among various types of heads and 2 types of functions are proposed (contact and signaling)
- > complete pilot lights, provided with integral LED.

All products are fitted with screw clamp terminals allowing fast and easy connection.

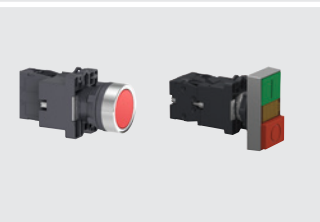
#### Contact functions

- Pushbuttons with spring return and push-push (marked or unmarked)
- Selector switches and key switches, 2 or 3 positions
- Emergency switching off pushbuttons with push-pull and turn to release
- Double-headed pushbuttons with spring return



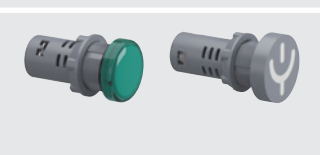
#### Contact and signaling functions

- Illuminated pushbuttons with integral LED, spring return and flush push
- Illuminated double-headed pushbuttons with integral LED, spring return



#### Signaling functions

- Pilot lights with integral LED
- Indicators with integral LED



#### Groomed ergonomics

- > Metallic-look ring on pushbuttons and switches gives a modern look
- > Ergonomic curve on the selector switches allows flexible operation



Metallic-look ring



Ergonomic curve

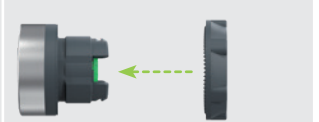


Pushbuttons and switches with metallic-look ring design

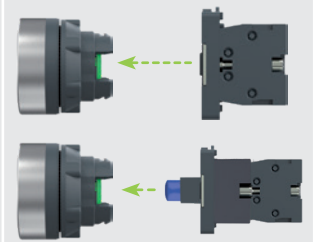
## Easy installation

- > Installation of pushbuttons is simple and easy
- > Mounting by single nut to the control panel
- > Anti-rotation plate prevents the pushbutton head from rotation

- Single lock ring for mounting on control panel



- Clip-together component system for head, body, contacts, and LED light blocks



## Proven robustness

- > Conforming to most demanding international standards and approvals
- > Tested and certified performance
- > Excellent resistance to mechanical shock and vibration
- > Supports extended temperature range from - 40° C to + 70° C



Helps customer to  
improve the reliability

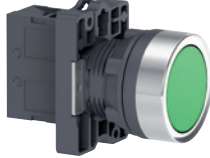
## Service and availability


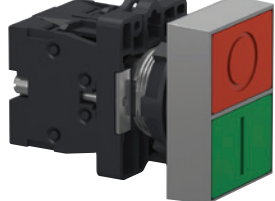
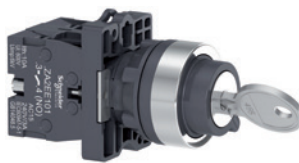
- > Supported by the service of Schneider Electric
- > Wide availability throughout an extensive distribution network

 Up to IP 65 degree of protection

# Control and signaling units Ø 22

Easy Harmony XA2, plastic  
Pushbuttons, switches and pilot lights

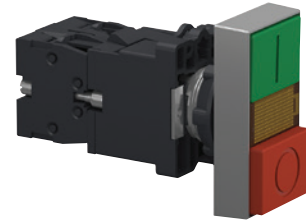
Type of products		Contact functions	
		Pushbuttons	Emergency switching off pushbuttons
			
			
Description of range		<ul style="list-style-type: none"> <li>Pushbuttons, spring return: flush push, mushroom head, and push-push</li> <li>Emergency switching off pushbuttons: turn to release and push-pull</li> </ul>	
Features	Products	Complete units	
	Shape of head	Circular	
Drilling or cut-out for mounting		Ø 22 mm/0.866 in.	
Degree of protection		IP 65 conforming to standard IEC 60529	
International standards		IEC 60947-5-1, EN 60947-5-1, GB/T 14048.1-93, GB/14048.5-93	
Product certification		CCC, EAC, CE	
Cabling		Screw clamp terminal connections	
Mounting	Panel thickness	Ø 1 to 6 mm/ 0.04 to 0.24 in.	
	Type references	<b>XA2EA●●/EA●●●●/EC●●/XA2ER●●/EH0●●</b>	<b>XA2ET●●/ES●●●</b>
Pages		12	13

Type of products		Contact functions	
		Selector and key switches	Double-headed pushbuttons
			
			
Description of range		<ul style="list-style-type: none"> <li>Selector switches, 2 or 3-position: standard or long handle</li> <li>Key switches</li> <li>Double-headed pushbuttons, spring return</li> </ul>	
Features	Products	Complete units	
	Shape of head	Circular	Rectangular
Drilling or cut-out for mounting		Ø 22 mm/0.866 in.	
Degree of protection		IP 54 conforming to standard IEC 60529 Selector switches: IP 65 Key switches: IP 54	IP 40 conforming to standard IEC 60529
International standards		IEC 60947-5-1, EN 60947-5-1, GB/T 14048.1-93, GB/14048.5-93	
Product certification		CCC, EAC, CE	CCC, CE, and EAC
Cabling		Screw clamp terminal connections	
Mounting	Panel thickness	Ø 1 to 6 mm/ 0.04 to 0.24 in.	
	Type references	<b>XA2ED●●/EJ●●/EG●●</b>	<b>XA2EA7A3415</b>
Pages		14	13

# Control and signaling units Ø 22

Easy Harmony XA2, plastic  
Pushbuttons, switches and pilot lights

Type of products	Contact and signaling functions	
	Illuminated pushbuttons	Illuminated double-headed pushbuttons



<b>Description of range</b>	■ Illuminated pushbuttons with integral LED, spring return: flush push	■ Illuminated double-headed pushbuttons with integral LED, spring return
<b>Features</b>	Products	Complete units
	Shape of head	Circular
<b>Drilling or cut-out for mounting</b>	Ø 22 mm/0.866 in.	
<b>Degree of protection</b>	IP 65 conforming to standard IEC 60529	IP 40 conforming to standard IEC 60529
<b>International standards</b>	IEC 60947-5-1, EN 60947-5-1, GB/T 14048.1-93, GB/14048.5-93	
<b>Product certification</b>	CCC, EAC, CE	CCC, CE, and EAC
<b>Cabling</b>	Screw clamp terminal connections	
<b>Mounting</b>	Panel thickness	Ø 1 to 6 mm/0.04 to 0.24 in.
<b>Type references</b>	<b>XA2EW3●●●</b>	<b>XA2EW7L3741●5</b>
<b>Pages</b>	15	13

Signaling functions	
Pilot lights	Indicators



■ Pilot lights with integral LED	■ Indicators with integral LED
Complete units	
Circular	
Ø 22 mm/0.866 in.	
IP 65 conforming to standard IEC 60529	IP 54 conforming to standard IEC 60529
IEC 60947-5-1, EN 60947-5-1, GB/T 14048.1-2012, GB/14048.5-2017	
CCC, CE	CCC, CE
Screw clamp terminal connections	
Ø 1 to 6 mm/0.04 to 0.24 in.	
<b>XA2EV●●LC/EV●E●LC/EV●D●LC/EV●●34LC</b>	<b>XA2EV●34●PC</b>
17	19



#### Presentation

The Easy Harmony XA2 range of Ø 22/0.866 in. plastic control and signaling units combines simplicity of installation, flexibility and robustness. It meets the requirements of the majority of industrial applications. The metallic-look ring design on the pushbuttons and switches gives them a modern look. These products are available in the form of complete units.

■ This range includes:

- Contact functions: pushbuttons, selector/key switches, Emergency switching off pushbuttons, and double-headed pushbuttons designed for parameter settings, adjustments, and start/stop control of machines and installations
- Contact and signaling functions: illuminated pushbuttons and double-headed illuminated pushbuttons designed for control and signaling functions
- Signaling functions: pilot lights and indicators designed for visual signaling

■ The pushbutton, switch control (illuminated and non-illuminated), and pilot light offer is both broad and comprehensive:

- Pushbuttons, spring return with flush push, marked or unmarked, or mushroom head
- Emergency stop pushbuttons Ø 40/1.575 in., Ø 30/1.181 in., and Ø 60/2.362 in. with 2 types of head: push-pull and turn to release
- Pilot lights, indicators, and illuminated pushbuttons with integral LED
- Selector switches with different types of operator: standard handle, long handle, or key
- Choice of heads: circular and double-head
- Connection type: screw clamp connector
- Various accessories

#### Installation

■ Easy Harmony XA2 products are both simple and quick to install:

- Mounting by a single nut to the control panel,
- Body/fixing collar simply clip on the head,
- Anti-loosening system for screw clamp terminals on contact blocks.

#### Environment

The performance features of the Easy Harmony XA2 range meets the following specifications:

■ Degrees of protection conforming to standard IEC 60529:

- IP 65 for pushbuttons, Emergency switching off pushbuttons, illuminated pushbuttons, and pilot lights
- IP 54 for key selector switch and indicators
- IP40 for double-headed pushbuttons



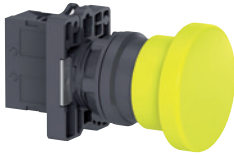

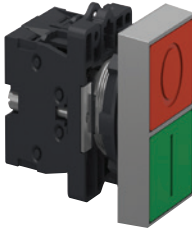
■ International standards:

- IEC 60947-5-1, EN 60947-5-1, GB/T 14048.1-93, GB/14048.5-93

■ Product certification:

- CCC, EAC, CE

For more technical information, please refer to the Schneider Electric website, Easy Harmony XA2 offer.

Complete units		Contact functions		
				
Pushbuttons, spring return	Type of push	Flush push, unmarked	Flush push, marked	Mushroom head
	Degree of protection	IP65	IP65	IP65
	Color	White, Black, Green, Yellow, Blue, and Red	Green, Black, White, and Red	Black, Green, Red, and Yellow
	Reference	<b>XA2EA●1/EA42</b>	<b>XA2EA33●1/EA43●2</b>	<b>XA2EC●1/EC42/ER21</b>
	Pages	<a href="#">11</a>	<a href="#">11</a>	<a href="#">11</a>
				
Pushbuttons, spring return	Type of push	Push-push, unmarked		
	Degree of protection	IP65		
	Color	White, Black, Green, Yellow, Blue, and Red		
	Reference	<b>XA2EH0●1/EH042</b>		
	Pages	<a href="#">12</a>		
				
Double-headed pushbuttons, spring return	Type of push	Flush push		
	Degree of protection	IP40		
	Color	Green and Red		
	Reference	<b>XA2EA7A3415</b>		
	Pages	<a href="#">12</a>		
				
Emergency switching off pushbuttons	Type of push	Turn to release and push-pull (Ø 30 mm/1.181 in., Ø 40 mm/1.575 in., Ø 60 mm/1.362 in.)		
	Degree of protection	IP65		
	Color	Red and Black		
	Reference	<b>XA2ET42/ES●42/ES422</b>		
	Pages	<a href="#">12</a>		

## Complete units (continued)

## Contact functions

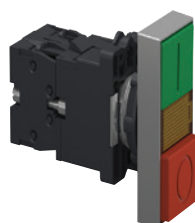


Selector switches and key switches	Type of push	Standard handle, 2 or 3 positions	Long handle, 2 or 3 positions	Key, 2 or 3 positions
	Degree of protection	IP65	IP65	IP54
	Reference	<b>XA2ED●●</b>	<b>XA2EJ●●</b>	<b>XA2EG21/EG●3</b>
	Page	13		

## Contact and signaling functions



Illuminated pushbuttons, spring return	Type of push	Flush push
	Degree of protection	IP65
	LED	Integral LEDs 24, 220...230, or 380...400 V
	Color	White, Green, Red, Yellow, and Blue
	Reference	<b>XA2EW3●B1/3●M1/ 3●Q1</b>
	Pages	14



Double-headed pushbuttons, spring return with pilot light block	Type of push	Flush push
	Degree of protection	IP40
	LED	Integral LEDs 24 or 220...230 V
	Color	Red and Green
	Reference	<b>XA2EW7L3741B5, XA2EW7L3741M5</b>
	Pages	13

Complete units (continued)

Signaling functions



<b>Pilot lights</b>	<b>Degree of protection</b>	IP65
	<b>LED</b>	Integral LEDs 12 V, 24 V, 30 V, 48 V, 60...63.5 V, 110 V, 220...230 V, and 380...400 V
	<b>Color</b>	White, Green, Red, Amber, Blue, and Yellow
	<b>Reference</b>	<b>XA2EV●●LC/EV●E●LC/EV●D●LC/EV●●34LC</b>
	<b>Pages</b>	<a href="#">15</a>



<b>Indicators</b>	<b>Degree of protection</b>	IP54
	<b>LED</b>	Integral LEDs 110 V, 220...230 V, and 380...400 V
	<b>Color</b>	Red and Green
	<b>Reference</b>	<b>XA2EV●34●PC</b>
	<b>Pages</b>	<a href="#">19</a>

# Control and signaling units Ø 22

Easy Harmony XA2, plastic

Spring return pushbuttons, marked and unmarked

Mushroom head pushbuttons, spring return



XA2EA31



XA2EA4342

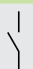
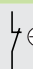








XA2EC51

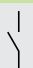
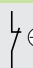



XA2EH021

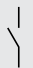
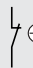

## Spring return pushbuttons with flush push

Shape of head	Type of contacts	Color of push	Marking	Reference	Weight kg/lb
	 				
	NO NC				
<b>Unmarked</b>					
	1 -	White	-	<a href="#">XA2EA11</a>	0.032/0.071
	-	Black	-	<a href="#">XA2EA21</a>	0.032/0.071
	-	Green	-	<a href="#">XA2EA31</a>	0.032/0.071
	-	Yellow	-	<a href="#">XA2EA51</a>	0.032/0.071
	-	Blue	-	<a href="#">XA2EA61</a>	0.032/0.071
-	- 1	Red	-	<a href="#">XA2EA42</a>	0.032/0.071
<b>Marked</b>					
	1 -	Green	"I"	<a href="#">XA2EA3311</a>	0.032/0.071
	1 -	Black	"↑"	<a href="#">XA2EA3351</a>	0.032/0.071
	1 -	White	"↑"	<a href="#">XA2EA3341</a>	0.032/0.071
	- 1	Red	"O"	<a href="#">XA2EA4322</a>	0.032/0.071
	- 1	Red	"STOP"	<a href="#">XA2EA4342</a>	0.032/0.071

## Mushroom head pushbuttons, spring return

Shape of head	Type of contacts	Color of push	Diameter Ø (mm)/ in.	Reference	Weight kg/lb
	 				
	NO NC				
	1 -	Black	40/1.575	<a href="#">XA2EC21</a>	0.052/0.115
	1 -	Green	40/1.575	<a href="#">XA2EC31</a>	0.052/0.115
	- 1	Red	40/1.575	<a href="#">XA2EC42</a>	0.052/0.115
	1 -	Yellow	40/1.575	<a href="#">XA2EC51</a>	0.052/0.115
	1 -	Black	60/2.362	<a href="#">XA2ER21</a>	0.058/0.128

## Pushbuttons, push-push with flush push

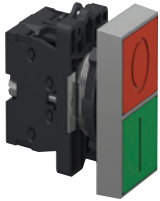
Shape of head	Type of contacts	Color of push	Reference	Weight kg/lb
	 			
	NO NC			
<b>Complete unit</b>				
	1 -	White	<a href="#">XA2EH011</a>	0.04/0.088
	1 -	Black	<a href="#">XA2EH021</a>	0.04/0.088
	1 -	Green	<a href="#">XA2EH031</a>	0.04/0.088
	- 1	Red	<a href="#">XA2EH042</a>	0.04/0.088
	1 -	Yellow	<a href="#">XA2EH051</a>	0.04/0.088
	1 -	Blue	<a href="#">XA2EH061</a>	0.04/0.088



# Control and signaling units Ø 22

Easy Harmony XA2, plastic  
 Double-headed pushbuttons, spring return  
 Emergency switching off pushbuttons

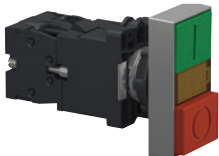
XA2E\_CP20011\_2



XA2EA7A3415

Double-headed pushbuttons, spring return							
Shape of head	Description	Type of contacts		Caps (1)		Reference	Weight kg/lb
				Marking	Background color		
		NO	NC				
Complete units							
	1 flush push, green	1	1	"I"	Green	<a href="#">XA2EA7A3415</a>	0.048/0.106
	1 flush push, red			"O"	Red		

XA2E\_CP20012\_2

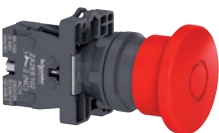


XA2EW7L3741●●

Double-headed pushbuttons with 1 white central pilot light block								
Shape of head	Description	Type of contacts		Caps (1)		Pilot light Voltage V	Reference	Weight kg/lb
				Marking	Background color			
		NO	NC					
Complete units								
	1 flush push, green	1	1	"I"	Green	24 ~	<a href="#">XA2EW7L3741B5</a>	0.072/0.159
	1 flush push, red			"O"	Red			
	1 central pilot light block, yellow					220...230 ~	<a href="#">XA2EW7L3741M5</a>	0.072/0.159



PFI32022



XA2ET42

Emergency switching off pushbuttons						
Shape of head	Type of push	Type of contacts	Diameter Ø (mm)/in.	Reference	Weight kg/lb	
		NC				
	Push-pull	1	40/1.575	<a href="#">XA2ET42</a>	0.088/0.194	
	Turn to release		1	30/1.181	<a href="#">XA2ES442</a>	0.056/0.123
40/1.575				<a href="#">XA2ES542</a>	0.058/0.128	
60/2.362				<a href="#">XA2ES642</a>	0.064/0.141	
30/1.181				<a href="#">XA2ES422</a>	0.056/0.123	

**Note:** For information on dimensions, please refer to the Schneider Electric website, Easy Harmony XA2 offer.  
 (1) These caps are factory assembled and cannot be removed (risk of damage).

# Control and signaling units Ø 22

Easy Harmony XA2, plastic  
Selector switches, with standard or long handle  
Key switches



XA2ED53

Selector switches, with standard handle or with long handle						
Shape of head	Type of push	Type of contacts		Number and type of positions	Reference	Weight kg/lb
		NO	NC			
	Standard handle	1	–	2 - stay put	XA2ED21	0.04/0.088
		1	1	2 - stay put	XA2ED25	0.054/0.119
		2	–	3 - stay put	XA2ED33	0.054/0.119
		2	–	3 - spring return from 2 sides	XA2ED53	0.054/0.119
	Long handle	1	–	2 - spring return	XA2ED41	0.041/0.090
		1	–	2 - stay put	XA2EJ21	0.041/0.090
		1	1	2 - stay put	XA2EJ25	0.041/0.090
		2	–	3 - stay put	XA2EJ33	0.055/0.121
		2	–	3 - spring return from 2 sides	XA2EJ53	0.055/0.121



XA2EG03

Key switches						
Shape of head	Type of push	Type of contacts		Number and type of positions	Reference	Weight kg/lb
		NO	NC			
	Key	1	–	2 - stay put, one side pull-out	XA2EG21	0.064/0.141
		2	–	2 - stay put, two sides pull-out	XA2EG43	0.078/0.172
		2	–	2 - spring return, one side pull-out	XA2EG63	0.078/0.172
		2	–	3 - spring return from 2 sides, middle pull-out	XA2EG73	0.078/0.172
		2	–	3 - stay put, middle pull-out	XA2EG33	0.078/0.172
		2	–	3 - stay put, 3 sides pull-out	XA2EG03	0.078/0.172

**Note:** For information on dimensions, please refer to the Schneider Electric website, Easy Harmony XA2 offer.

# Control and signaling units Ø 22

Easy Harmony XA2, plastic

Illuminated pushbuttons with flush push

Bulbs for illuminated pushbuttons

Contact functions for all XA2 pushbuttons and switches

PF132051



XA2EW36B1

Illuminated pushbuttons with integral LED									
Shape of head	Type of push	Supply voltage V	Type of contacts		Color	Reference	Weight kg/lb		
			NO	NC					
○	Flush push	24 ~	1	-	White	<a href="#">XA2EW31B1</a>	0.056/0.123		
					Green	<a href="#">XA2EW33B1</a>	0.056/0.123		
					Red	<a href="#">XA2EW34B1</a>	0.056/0.123		
					Yellow	<a href="#">XA2EW35B1</a>	0.056/0.123		
					Blue	<a href="#">XA2EW36B1</a>	0.056/0.123		
					-	1	Red	<a href="#">XA2EW34B2</a>	0.056/0.123
				220-230 ~	1	-	White	<a href="#">XA2EW31M1</a>	0.064/0.141
				Green			<a href="#">XA2EW33M1</a>	0.064/0.141	
				Red			<a href="#">XA2EW34M1</a>	0.064/0.141	
				Yellow			<a href="#">XA2EW35M1</a>	0.064/0.141	
				Blue			<a href="#">XA2EW36M1</a>	0.064/0.141	
					-	1	Red	<a href="#">XA2EW34M2</a>	0.056/0.123
				380-400 ~	1	-	White	<a href="#">XA2EW31Q1</a>	0.064/0.141
				Green			<a href="#">XA2EW33Q1</a>	0.064/0.141	
				Red			<a href="#">XA2EW34Q1</a>	0.064/0.141	
		Yellow	<a href="#">XA2EW35Q1</a>	0.064/0.141					
		Blue	<a href="#">XA2EW36Q1</a>	0.064/0.141					
			-	1	Red	<a href="#">XA2EW34Q2</a>	0.056/0.123		

**Note:** For information on dimensions, please refer to the Schneider Electric website, Easy Harmony XA2 offer.

## Control and signaling units Ø 22

Easy Harmony XA2, plastic

Illuminated pushbuttons with flush push

Bulbs for illuminated pushbuttons

Contact functions for all XA2 pushbuttons and switches



### Bulbs with BA 9s base fitting and associated accessories

Description	Characteristics	Color	Sold in lots of	Unit reference	Weight kg/lb
LEDs	24 ~	White	10	DL1LED241	0.002/0.004
		Green	10	DL1LED243	0.002/0.004
		Red	10	DL1LED244	0.002/0.004
		Yellow	10	DL1LED245	0.002/0.004
		Blue	10	DL1LED246	0.002/0.004

Description	Application	Sold in lots of	Unit reference	Weight kg/lb
Bezel tool	Tightening head fixing nut	1	ZB5AZ905	0.016/0.035
Anti-rotation plate	Prevents head from rotation	10	ZB5AZ902	0.008/0.018

### Contact functions (for all XA2 pushbuttons and switches)

#### Screw clamp terminal connections

Description	To be used with	Type of contacts		Sold in lots of	Unit reference	Weight kg/lb
		NO	NC			
Contact blocks	All XA2 pushbuttons and switches	1	–	1	ZA2EE101	0.014/0.031
		–	1	1	ZA2EE102	0.014/0.031

XA2E\_CP20053\_2



XA2EVB4LC

XA2E\_CP20056\_2



XA2EVC6LC

XA2E\_CP20054\_2



XA2EVE4LC

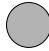
## Pilot lights with integral LED, screw clamp terminal connection

Shape of head	Supply voltage V	Color of lens	Sold in lots of	Reference	Weight kg/lb
●	12 ~	White	10	<a href="#">XA2EVJ1LC</a>	0.019/0.041
		Green	10	<a href="#">XA2EVJ3LC</a>	0.019/0.041
		Red	10	<a href="#">XA2EVJ4LC</a>	0.019/0.041
		Amber	10	<a href="#">XA2EVJ5LC</a>	0.019/0.041
		Blue	10	<a href="#">XA2EVJ6LC</a>	0.019/0.041
		Yellow	10	<a href="#">XA2EVJ8LC</a>	0.019/0.041
	24 ~	White	10	<a href="#">XA2EVB1LC</a>	0.019/0.041
		Green	10	<a href="#">XA2EVB3LC</a>	0.019/0.041
		Red	10	<a href="#">XA2EVB4LC</a>	0.019/0.041
		Amber	10	<a href="#">XA2EVB5LC</a>	0.019/0.041
Blue		10	<a href="#">XA2EVB6LC</a>	0.019/0.041	
Yellow		10	<a href="#">XA2EVB8LC</a>	0.019/0.041	
30 ~	White	10	<a href="#">XA2EVC1LC</a>	0.019/0.041	
	Green	10	<a href="#">XA2EVC3LC</a>	0.019/0.041	
	Red	10	<a href="#">XA2EVC4LC</a>	0.019/0.041	
	Amber	10	<a href="#">XA2EVC5LC</a>	0.019/0.041	
	Blue	10	<a href="#">XA2EVC6LC</a>	0.019/0.041	
	Yellow	10	<a href="#">XA2EVC8LC</a>	0.019/0.041	
	Green/Red	5	<a href="#">XA2EVB34LC</a>	0.022/0.049	
48 ~	White	10	<a href="#">XA2EVE1LC</a>	0.019/0.041	
	Green	10	<a href="#">XA2EVE3LC</a>	0.019/0.041	
	Red	10	<a href="#">XA2EVE4LC</a>	0.019/0.041	
	Amber	10	<a href="#">XA2EVE5LC</a>	0.019/0.041	
	Blue	10	<a href="#">XA2EVE6LC</a>	0.019/0.041	
	Yellow	10	<a href="#">XA2EVE8LC</a>	0.019/0.041	
60...63.5 ~	White	10	<a href="#">XA2EVEE1LC</a>	0.019/0.041	
	Green	10	<a href="#">XA2EVEE3LC</a>	0.019/0.041	
	Red	10	<a href="#">XA2EVEE4LC</a>	0.019/0.041	
	Amber	10	<a href="#">XA2EVEE5LC</a>	0.019/0.041	
	Blue	10	<a href="#">XA2EVEE6LC</a>	0.019/0.041	
	Yellow	10	<a href="#">XA2EVEE8LC</a>	0.019/0.041	

**Note:** For information on dimensions, please refer to the Schneider Electric website, Easy Harmony XA2 offer.



## Pilot lights with integral LED, screw clamp terminal connection

Shape of head	Supply voltage V	Color of lens	Sold in lots of	Reference	Weight kg/lb
	110 ~	White	10	XA2EVF1LC	0.019/0.041
		Green	10	XA2EVF3LC	0.019/0.041
		Red	10	XA2EVF4LC	0.019/0.041
		Amber	10	XA2EVF5LC	0.019/0.041
		Blue	10	XA2EVF6LC	0.019/0.041
		Yellow	10	XA2EVF8LC	0.019/0.041
	220 ---	White	10	XA2EVM1LC	0.019/0.041
		Green	10	XA2EVM3LC	0.019/0.041
		Red	10	XA2EVM4LC	0.019/0.041
		Amber	10	XA2EVM5LC	0.019/0.041
		Blue	10	XA2EVM6LC	0.019/0.041
		Yellow	10	XA2EVM8LC	0.019/0.041
	220-230 ~	White	10	XA2EVM1LC	0.019/0.041
		Green	10	XA2EVM3LC	0.019/0.041
		Red	10	XA2EVM4LC	0.019/0.041
Amber		10	XA2EVM5LC	0.019/0.041	
Blue		10	XA2EVM6LC	0.019/0.041	
Yellow		10	XA2EVM8LC	0.019/0.041	
380...400 ~	White	10	XA2EVQ1LC	0.019/0.041	
	Green	10	XA2EVQ3LC	0.019/0.041	
	Red	10	XA2EVQ4LC	0.019/0.041	
	Amber	10	XA2EVQ5LC	0.019/0.041	
	Blue	10	XA2EVQ6LC	0.019/0.041	
	Yellow	10	XA2EVQ8LC	0.019/0.041	
Green/Red			5	XA2EVM34LC	0.022/0.049



XA2EVM5LC



XA2EVQ8LC



XA2EVF34SPC



XA2EVF34BPC



XA2EVF34GPC

## Indicators, screw clamp terminal connection

Shape of head	Indicator type	Supply voltage V	Color of lens	Sold in lots of	Reference	Weight kg/lb
	Isolation switch	110 ~	Green/Red	5	XA2EVF34SPC	0.027/0.058
		220...230 ~	Green/Red	5	XA2EVM34SPC	0.027/0.058
		380...400 ~	Green/Red	5	XA2EVQ34SPC	0.027/0.058
	Circuit breaker	110 ~	Green/Red	5	XA2EVF34BPC	0.027/0.058
		220...230 ~	Green/Red	5	XA2EVM34BPC	0.027/0.058
		380...400 ~	Green/Red	5	XA2EVQ34BPC	0.027/0.058
	Ground	110 ~	Green/Red	5	XA2EVF34GPC	0.027/0.058
		220...230 ~	Green/Red	5	XA2EVM34GPC	0.027/0.058
		380...400 ~	Green/Red	5	XA2EVQ34GPC	0.027/0.058

**Note:** For information on dimensions, please refer to the Schneider Electric website, Easy Harmony XA2 offer.

## Control and signaling units Ø 22

Easy Harmony XA2, plastic

Empty control stations for XA2 pushbuttons, switches,  
and pilot lights

XALB01C



XALB03C

## Empty control stations

Description	Characteristics	Dimension w x h x d  mm/in.	Number of cut-outs	Reference	Weight kg/lb
Light gray "RAL 7035" cover Dark gray "RAL 7016" base	IP65	68 x 86 x 51/ 2.68 x 3.39 x 2	1	<a href="#">XALB01C</a>	0.100/0.220
		68 x 104 x 51/ 2.68 x 4.1 x 2	2	<a href="#">XALB02C</a>	0.150/0.330
		68 x 86 x 51/ 2.68 x 3.39 x 2	3	<a href="#">XALB03C</a>	0.200/0.440
Yellow "RAL 1021" cover Dark gray "RAL 7016" base	IP65	68 x 86 x 51/ 2.68 x 3.39 x 2	1	<a href="#">XALB01YC</a>	0.100/0.220

<b>D</b>			
DL1LED241	16	XA2EVC6LC	17
DL1LED243	16	XA2EVC8LC	17
DL1LED244	16	XA2EVE1LC	17
DL1LED245	16	XA2EVE3LC	17
DL1LED246	16	XA2EVE4LC	17
		XA2EVE5LC	17
		XA2EVE6LC	17
		XA2EVE8LC	17
		XA2EVEE1LC	17
		XA2EVEE3LC	17
		XA2EVEE4LC	17
		XA2EVEE5LC	17
		XA2EVEE6LC	17
		XA2EVEE8LC	17
		XA2EVF1LC	18
		XA2EVF3LC	18
		XA2EVF4LC	18
		XA2EVF5LC	18
		XA2EVF6LC	18
		XA2EVF8LC	18
		XA2EVF34BPC	18
		XA2EVF34GPC	18
		XA2EVF34SPC	18
		XA2EVJ1LC	17
		XA2EVJ3LC	17
		XA2EVJ4LC	17
		XA2EVJ5LC	17
		XA2EVJ6LC	17
		XA2EVJ8LC	17
		XA2EVM1LC	18
		XA2EVM3LC	18
		XA2EVM4LC	18
		XA2EVM5LC	18
		XA2EVM6LC	18
		XA2EVM8LC	18
		XA2EVM34BPC	18
		XA2EVM34GPC	18
		XA2EVM34LC	18
		XA2EVM34SPC	18
		XA2EVMD1LC	18
		XA2EVMD3LC	18
		XA2EVMD4LC	18
		XA2EVMD5LC	18
		XA2EVMD6LC	18
		XA2EVMD8LC	18
		XA2EVQ1LC	18
		XA2EVQ3LC	18
		XA2EVQ4LC	18
		XA2EVQ5LC	18
		XA2EVQ6LC	18
		XA2EVQ8LC	18
		XA2EVQ34BPC	18
		XA2EVQ34GPC	18
		XA2EVQ34SPC	18
		XA2EW7L3741B5	13
		XA2EW7L3741M5	13
		XA2EW31B1	15
		XA2EW31M1	15
		XA2EW31Q1	15
		XA2EW33B1	15
		XA2EW33M1	15
		XA2EW33Q1	15
		XA2EW34B1	15
		XA2EW34B2	15
		XA2EW34M1	15
		XA2EW34M2	15
		XA2EW34Q1	15
		XA2EW34Q2	15
		XA2EW35B1	15
		XA2EW35M1	15
		XA2EW35Q1	15
		XA2EW36B1	15
		XA2EW36M1	15
		XA2EW36Q1	15
		XALB01C	19
		XALB01YC	19
		XALB02C	19
		XALB03C	19
		<b>Z</b>	
		ZA2EE101	16
		ZA2EE102	16
		ZB5AZ902	16
		ZB5AZ905	16

Life Is On



Learn more about our products at  
[www.schneider-electric.com](http://www.schneider-electric.com)

The information provided in this documentation contains general descriptions and/or technical characteristics of the performance of the products contained herein. This documentation is not intended as a substitute for and is not to be used for determining suitability or reliability of these products for specific user applications. It is the duty of any such user or integrator to perform the appropriate and complete risk analysis, evaluation and testing of the products with respect to the relevant specific application or use thereof. Neither Schneider Electric nor any of its affiliates or subsidiaries shall be responsible or liable for misuse of the information contained herein.

Design: Schneider Electric  
Photos: Schneider Electric

**Schneider Electric Industries SAS**

Head Office  
35, rue Joseph Monier - CS 30323  
F-92500 Rueil-Malmaison Cedex  
France

DIA5ED2140104EN  
January 2021 - V5.0