



* Outsourcing products according to customer requirements



RV INSULATED TERMINAL

- **Insulation:** Vinyl
 - **Material:** Copper or brass
 - **Plating:** Tin
- Welding connector with copper material only.

Items	Din (mm ²)	Dimension (mm)						D
		d2	B	L	F	H		
RV2-3	1.5-2.5	3.2	6.6	17.8	4.3	10.0	4.9	
RV2-4	1.5-2.5	4.3	6.6	21	7.0	10.0	4.9	
RV2-5	1.5-2.5	5.3	8.5	22.5	7.8	10.0	4.9	
RV3.5-5	2.5-4	5.3	8.0	24.5	7.7	13.0	6.2	
RV5.5-5	4-6	5.3	9.5	25.5	8.3	13.0	6.7	
RV5.5-6	4-6	6.4	12.0	31.5	13.0	13.0	6.7	
RV5.5-8	4-6	8.4	15.0	33.7	13.7	13.0	6.7	
RV5.5-10	4-6	10.5	15.0	33.7	13.7	13.0	6.7	
RV5.5-12	4-6	13	19.2	38.1	16.0	13.0	6.7	



EARTH CABLE

- **Insulation:** PVC
- **Material:** Copper
- **Cable Diameter:** 0.5-35mm²

Cable Diameter (mm ²)	Core (Copper)	Cable Jacket (PVC)
0.5, 0.75, 1.0, 1.5, 2.5, 4.0, 6.0, 10.0, 16.0, 25.0, 35.0	The resistivity of copper wire < 0,019 Q.mm ² /m	Red, Blue, Green, Yellow-Green, Black, White

Machining the earth cable with the cable standard from famous cable companies such as CADIVI, LS, LION, ...



Material: Copper tube (Cu) 99% up **Surface:** Tin plated **Range size (mm²):** 1.5-1000



No.	Items	Dimension (mm)							Thickness (mm)	Weight (g)
		d2	d1	D	B	E	F	L		
1	TL1.5-3	3.2	2.2	3.7	8	7	7	20	0.75	1.10
	TL1.5-4	4.2	2.2	3.7	8	7	7	20	0.75	1.10
	TL1.5-5	5.2	2.2	3.7	10	7	7	20	0.75	1.10
	TL1.5-6	6.2	2.2	3.7	10	7	7	20	0.75	1.10
2	TL2.5-3	3.2	2.4	3.9	8	7	7	20	0.75	1.20
	TL2.5-4	4.2	2.4	3.9	8	7	7	20	0.75	1.20
	TL2.5-5	5.2	2.4	3.9	10	7	7	20	0.75	1.20
3	TL4-4	4.2	2.8	4.5	10	7	8	20	0.85	1.70
	TL4-5	5.2	2.8	4.5	10	7	8	20	0.85	1.70
	TL4-6	6.2	2.8	4.5	10	7	8	20	0.85	1.70
	TL4-8	8.2	2.8	4.5	12.5	7	8	20	0.85	1.70
4	TL6-4	4.2	3.8	5.5	10	9	9	24	0.85	2.42
	TL6-5	5.2	3.8	5.5	10	9	9	24	0.85	2.32
	TL6-6	6.2	3.8	5.5	10	9	9	24	0.85	2.17
	TL6-8	8.2	3.8	5.5	12.5	9	9	27	0.85	1.83
5	TL10-4	4.2	4.5	6.2	10	9	10	25	0.85	2.94
	TL10-5	5.2	4.5	6.2	10	9	10	25	0.85	2.84
	TL10-6	6.2	4.5	6.2	10	9	10	25	0.85	2.69
	TL10-8	8.2	4.5	6.2	12.5	9	10	27	0.85	2.35
6	TL10-10	10.2	4.5	6.2	15	9	10	27	0.85	1.94
	TL16-5	5.2	5.4	7.1	10	12	11	27	0.85	4.10
	TL16-6	6.2	5.4	7.1	10	12	11	27	0.85	3.95
	TL16-8	8.2	5.4	7.1	12.5	12	11	30	0.85	3.61
6	TL16-10	10.2	5.4	7.1	15	12	11	30	0.85	3.20
	TL16-12	12.5	5.4	7.1	16.5	12	11	30	0.85	2.60

Material: Copper tube (Cu) 99% up Surface: Tin plated Range size (mm²): 1.5-1000



No.	Items	Dimension (mm)							Thickness (mm)	Weight (g)
		d2	d1	D	B	E	F	L		
7	TL25-5	5.2	6.8	8.8	12.5	13	12	30	1.0	6.53
	TL25-6	6.2	6.8	8.8	12.5	13	12	30	1.0	6.40
	TL25-8	8.2	6.8	8.8	12.5	13	12	30	1.0	6.00
	TL25-10	10.2	6.8	8.8	15	13	12	32	1.0	5.50
	TL25-12	12.5	6.8	8.8	17	13	12	34	1	4.8
8	TL35-5	5.5	8.2	10.6	15	14	14	35	1.2	11.06
	TL35-6	6.5	8.2	10.6	15	14	14	35	1.2	10.9
	TL35-8	8.5	8.2	10.6	15	14	14	35	1.2	10.5
	TL35-10	10.5	8.2	10.6	15	14	14	37	1.2	9.8
	TL35-12	12.5	8.2	10.6	18.5	14	14	37	1.2	9
9	TL50-6	6.5	9.5	12.4	18	16	17	43	1.45	18.06
	TL50-8	8.5	9.5	12.4	18	16	17	43	1.45	17.5
	TL50-10	10.5	9.5	12.4	18	16	17	43	1.45	16.7
	TL50-12	12.5	9.5	12.4	19	16	17	45	1.45	15.8
	TL50-14	15	9.5	12.4	21	16	17	45	1.45	14.4
10	TL70-6	6.5	11.2	14.7	21	18	20	48	1.75	30.3
	TL70-8	8.5	11.2	14.7	21	18	20	48	1.75	29.6
	TL70-10	11	11.2	14.7	21	18	20	48	1.75	28.7
	TL70-12	12.5	11.2	14.7	21	18	20	48	1.75	27.6
	TL70-14	15	11.2	14.7	21	18	20	48	1.75	25.9
11	TL95-6	6.5	13.5	17.4	25.5	20	22	54	1.95	44.7
	TL95-8	8.5	13.5	17.4	25.5	20	22	54	1.95	43.9
	TL95-10	10.5	13.5	17.4	25.5	20	22	54	1.95	42.9
	TL95-12	13	13.5	17.4	25.5	20	22	54	1.95	41.3
	TL95-14	15	13.5	17.4	25.5	20	22	54	1.95	39.8
12	TL120-6	6.5	15	19.4	28	24	24	61	2.2	63.6
	TL120-8	8.5	15	19.4	28	24	24	61	2.2	62.7
	TL120-10	10.5	15	19.4	28	24	24	61	2.2	61.6
	TL120-12	13	15	19.4	28	24	24	61	2.2	59.8
	TL120-14	15	15	19.4	28	24	24	61	2.2	58.1
	TL120-16	17	15	19.4	28	24	24	61	2.2	56.2

Material: Copper tube (Cu) 99% up Surface: Tin plated Range size (mm²): 1.5-1000



No.	Items	Dimension (mm)							Thickness (mm)	Weight (g)
		d2	d1	D	B	E	F	L		
13	TL150-6	6.5	16.5	21.2	30.5	26	27	68	2.35	83.1
	TL150-8	8.5	16.5	21.2	30.5	26	27	68	2.35	82.2
	TL150-10	10.5	16.5	21.2	30.5	26	27	68	2.35	81
	TL150-12	13	16.5	21.2	30.5	26	27	68	2.35	79.1
	TL150-14	15	16.5	21.2	30.5	26	27	68	2.35	77.2
	TL150-16	17	16.5	21.2	30.5	26	27	68	2.35	75.2
14	TL185-6	6.5	18.5	23.5	34	32	29	78	2.5	111.7
	TL185-8	8.5	18.5	23.5	34	32	29	78	2.5	110.7
	TL185-10	10.5	18.5	23.5	34	32	29	78	2.5	109.4
	TL185-12	13	18.5	23.5	34	32	29	78	2.5	107.4
	TL185-14	15	18.5	23.5	34	32	29	78	2.5	105.4
15	TL185-16	17	18.5	23.5	34	32	29	78	2.5	103.3
	TL240-6	6.5	21	26.5	38.5	38	34	90	2.75	164.5
	TL240-8	8.5	21	26.5	38.5	38	34	90	2.75	163.4
	TL240-10	10.5	21	26.5	38.5	38	34	90	2.75	161.9
	TL240-12	13	21	26.5	38.5	38	34	90	2.75	159.7
	TL240-14	15	21	26.5	38.5	38	34	90	2.75	157.6
	TL240-16	17	21	26.5	38.5	38	34	90	2.75	155.1
	TL240-18	19	21	26.5	38.5	38	34	90	2.75	152.4
16	TL240-20	21	21	26.5	38.5	38	34	90	2.75	149.4
	TL300-8	8.5	23.5	30	43.5	42	37	101	3.25	239.6
	TL300-10	10.5	23.5	30	43.5	42	37	101	3.25	237.9
	TL300-12	13	23.5	30	43.5	42	37	101	3.25	235.2
	TL300-14	15	23.5	30	43.5	42	37	101	3.25	232.7
	TL300-16	17	23.5	30	43.5	42	37	101	3.25	229.9
	TL300-18	19	23.5	30	43.5	42	37	101	3.25	226.6
17	TL300-20	21	23.5	30	43.5	42	37	101	3.25	223
	TL400-12	13	28.5	36.5	53	44	44	113	4	400.4
	TL400-14	15	28.5	36.5	53	44	44	113	4	397.3
	TL400-16	17	28.5	36.5	53	44	44	113	4	393.7
	TL400-18	19	28.5	36.5	53	44	44	113	4	389.7
	TL400-20	21	28.5	36.5	53	44	44	113	4	385.3
TL400-22	23	28.5	36.5	53	44	44	113	4	380.5	

Material: Copper tube (Cu) 99% up Surface: Tin plated Range size (mm²): 1.5-1000



No.	Items	Dimension (mm)							Thickness (mm)	Weight (g)
		d2	d1	D	B	E	F	L		
18	TL500-12	13	30	39	56	48	48	124	4.5	547.5
	TL500-14	15	30	39	56	48	48	124	4.5	544
	TL500-16	17	30	39	56	48	48	124	4.5	540
	TL500-18	19	30	39	56	48	48	124	4.5	535.6
	TL500-20	21	30	39	56	48	48	124	4.5	530.6
	TL500-22	23	30	39	56	48	48	124	4.5	525.1
19	TL630-12	13	34.5	44	63.5	52	51	130	4.75	659
	TL630-14	15	34.5	44	63.5	52	51	130	4.75	655.2
	TL630-16	17	34.5	44	63.5	52	51	130	4.75	651
	TL630-18	19	34.5	44	63.5	52	51	130	4.75	646.3
	TL630-20	21	34.5	44	63.5	52	51	130	4.75	641
	TL630-22	23	34.5	44	63.5	52	51	130	4.75	635.3
20	TL800-14	15	40	51.2	74	54	56	140	5.6	971
	TL800-16	17	40	51.2	74	54	56	140	5.6	966
	TL800-18	19	40	51.2	74	54	56	140	5.6	960.5
	TL800-20	21	40	51.2	74	54	56	140	5.6	954.3
21	TL1000-14	15	44	56.6	81.5	60	56	146	6.3	1,259.40
	TL1000-16	17	44	56.6	81.5	60	56	146	6.3	1,253.90
	TL1000-18	19	44	56.6	81.5	60	56	146	6.3	1,247.60
	TL1000-20	21	44	56.6	81.5	60	56	146	6.3	1,240.60
	TL1000-22	23	44	56.6	81.5	60	56	146	6.3	1,240.60

CRIMPING TOOLS

Item size (mm²)

1.5 - 10

6 - 16

10 - 25

10 - 35

> 35

Tools



Material: Copper tube (Cu) 99% up Surface: Tin plated Range size (mm²): 1.5-1000



No.	Items	Dimension (mm)							Thickness (mm)	Weight (g)
		d2	d1	D	B	E	F	L		
1	SC1.5-3	3.2	2.2	3.7	8	7	7	20	0.5	0.79
	SC1.5-4	4.2	2.2	3.7	8	7	7	20	0.5	0.79
	SC1.5-5	5.2	2.2	3.7	10	7	7	20	0.5	0.79
	SC1.5-6	6.2	2.2	3.7	10	7	7	20	0.5	0.79
	SC2.5-3	3.2	2.4	3.9	8	7	7	20	0.5	0.84
2	SC2.5-4	4.2	2.4	3.9	8	7	7	20	0.5	0.84
	SC2.5-5	5.2	2.4	3.9	10	7	7	20	0.5	0.84
	SC2.5-6	6.2	2.4	3.9	10	7	7	20	0.5	0.84
	SC2.5-8	8.2	2.4	3.9	12.5	7	7	20	0.5	0.84
3	SC4-4	4.2	2.8	4.5	10	7	8	20	0.65	1.38
	SC4-5	5.2	2.8	4.5	10	7	8	20	0.65	1.38
	SC4-6	6.2	2.8	4.5	10	7	8	20	0.65	1.38
	SC4-8	8.2	2.8	4.5	12.5	7	8	20	0.65	1.38
4	SC6-4	4.2	4.1	5.5	10	9	9	24	0.7	1.63
	SC6-5	5.2	4.1	5.5	10	9	9	24	0.7	1.6
	SC6-6	6.2	4.1	5.5	10	9	9	24	0.7	1.48
	SC6-8	8.2	4.1	5.5	12	9	9	27	0.7	1.45
5	SC6-10	10.2	4.1	5.5	15	9	9	27	0.7	1.43
	SC10-4	4.2	4.6	6.2	10	9	10	25	0.8	2.81
	SC10-5	5.2	4.6	6.2	10	9	10	25	0.8	2.71
	SC10-6	6.2	4.6	6.2	10	9	10	25	0.8	2.65
6	SC10-8	8.2	4.6	6.2	12.5	9	10	27	0.8	2.62
	SC10-10	10.2	4.6	6.2	15	9	10	27	0.8	2.59
	SC16-5	5.2	5.5	7.1	10	12	11	27	0.8	3.91
	SC16-6	6.2	5.5	7.1	10	12	11	27	0.8	3.85
	SC16-8	8.2	5.5	7.1	12.5	12	11	30	0.8	3.82
	SC16-10	10.2	5.5	7.1	15	12	11	30	0.8	3.79

Material: Copper tube (Cu) 99% up Surface: Tin plated Range size (mm²): 1.5-1000

No.	Items	Dimension (mm)							Thickness (mm)	Weight (g)
		d2	d1	D	B	E	F	L		
7	SC25-5	5.2	7	8.8	12.5	13	12	30	0.9	6.09
	SC25-6	6.2	7	8.8	12.5	13	12	30	0.9	5.97
	SC25-8	8.2	7	8.8	12.5	13	12	30	0.9	5.83
	SC25-10	10.2	7	8.8	15	13	12	32	0.9	5.8
	SC25-12	12.2	7	8.8	17	13	12	34	0.9	5.8
8	SC35-5	5.5	8.6	10.6	15	14	14	35	1	9.43
	SC35-6	6.5	8.6	10.6	15	14	14	35	1	9.27
	SC35-8	8.5	8.6	10.6	15	14	14	35	1	8.9
	SC35-10	10.5	8.6	10.6	15	14	14	37	1	8.6
	SC35-12	12.5	8.6	10.6	18.5	14	14	37	1	8.6
9	SC50-6	6.5	10	12.4	18	16	17	43	1.2	15.37
	SC50-8	8.5	10	12.4	18	16	17	43	1.2	14.9
	SC50-10	10.5	10	12.4	18	16	17	43	1.2	14.3
	SC50-12	12.5	10	12.4	19	16	17	43	1.2	14.1
	SC50-14	15	10	12.4	21	16	17	43	1.2	14.1
10	SC70-6	6.5	11.9	14.7	21	18	20	48	1.4	24.96
	SC70-8	8.5	11.9	14.7	21	18	20	48	1.4	24.4
	SC70-10	10.5	11.9	14.7	21	18	20	48	1.4	23.7
	SC70-12	12.5	11.9	14.7	21	18	20	48	1.4	22.7
	SC70-14	15	11.9	14.7	21	18	20	48	1.4	21.4
11	SC95-6	6.5	14.2	17.4	25.5	20	22	54	1.6	37.55
	SC95-8	8.5	14.2	17.4	25.5	20	22	54	1.6	36.92
	SC95-10	10.5	14.2	17.4	25.5	20	22	54	1.6	36.1
	SC95-12	13	14.2	17.4	25.5	20	22	54	1.6	34.7
	SC95-14	15	14.2	17.4	25.5	20	22	54	1.6	33.5
12	SC120-6	6.5	15.8	19.4	28	24	24	61	1.8	53.3
	SC120-8	8.5	15.8	19.4	28	24	24	61	1.8	52.63
	SC120-10	10.5	15.8	19.4	28	24	24	61	1.8	51.6
	SC120-12	13	15.8	19.4	28	24	24	61	1.8	50.1
	SC120-14	15	15.8	19.4	28	24	24	61	1.8	48.7
SC120-16	17	15.8	19.4	28	24	24	61	1.8	47.1	

Material: Copper tube (Cu) 99% up Surface: Tin plated Range size (mm²): 1.5-1000

No.	Items	Dimension (mm)							Thickness (mm)	Weight (g)
		d2	d1	D	B	E	F	L		
13	SC150-8	8.5	17.4	21.2	30.5	26	27	68	1.9	68.24
	SC150-10	10.5	17.4	21.2	30.5	26	27	68	1.9	67.1
	SC150-12	13	17.4	21.2	30.5	26	27	68	1.9	65.6
	SC150-14	15	17.4	21.2	30.5	26	27	68	1.9	64.1
	SC150-16	17	17.4	21.2	30.5	26	27	68	1.9	62.4
	SC185-6	6.5	19.1	23.5	34	32	29	78	2.2	99.84
14	SC185-8	8.5	19.1	23.5	34	32	29	78	2.2	98.96
	SC185-10	10.5	19.1	23.5	34	32	29	78	2.2	97.7
	SC185-12	13	19.1	23.5	34	32	29	78	2.2	95.9
	SC185-14	15	19.1	23.5	34	32	29	78	2.2	94.2
	SC185-16	17	19.1	23.5	34	32	29	78	2.2	92.3
	SC240-6	6.5	21.9	26.5	38.5	38	34	90	2.3	140.3
15	SC240-8	8.5	21.9	26.5	38.5	38	34	90	2.3	139.3
	SC240-10	10.5	21.9	26.5	38.5	38	34	90	2.3	138.1
	SC240-12	13	21.9	26.5	38.5	38	34	90	2.3	136.3
	SC240-14	15	21.9	26.5	38.5	38	34	90	2.3	134.5
	SC240-16	17	21.9	26.5	38.5	38	34	90	2.3	132.5
	SC240-18	19	21.9	26.5	38.5	38	34	90	2.3	130.2
16	SC240-20	21	21.9	26.5	38.5	38	34	90	2.3	127.6
	SC300-8	8.5	24.6	30	43.5	42	37	101	2.7	203.1
	SC300-10	10.5	24.6	30	43.5	42	37	101	2.7	204.4
	SC300-12	13	24.6	30	43.5	42	37	101	2.7	199.5
	SC300-14	15	24.6	30	43.5	42	37	101	2.7	197.4
	SC300-16	17	24.6	30	43.5	42	37	101	2.7	195
17	SC300-18	19	24.6	30	43.5	42	37	101	2.7	192.3
	SC300-20	21	24.6	30	43.5	42	37	101	2.7	189.4
	SC400-12	13	29.9	36.5	53	44	44	113	3.3	337.6
	SC400-14	15	29.9	36.5	53	44	44	113	3.3	335
	SC400-16	17	29.9	36.5	53	44	44	113	3.3	332.2
	SC400-18	19	29.9	36.5	53	44	44	113	3.3	328.9
17	SC400-20	21	29.9	36.5	53	44	44	113	3.3	325.2
	SC400-22	23	29.9	36.5	53	44	44	113	3.3	321.2



Material: Copper tube (Cu) 99% up Surface: Tin plated Range size (mm²): 1.5-1000

No.	Items	Dimension (mm)							Thickness (mm)	Weight (g)
		d2	d1	D	B	E	F	L		
18	SC500-12	13	31.8	39	56	48	48	124	3.6	428.5
	SC500-14	15	31.8	39	56	48	48	124	3.6	425.7
	SC500-16	17	31.8	39	56	48	48	124	3.6	422.5
	SC500-18	19	31.8	39	56	48	48	124	3.6	418.9
	SC500-20	21	31.8	39	56	48	48	124	3.6	414.9
SC500-22	23	31.8	39	56	48	48	124	3.6	410.6	
19	SC630-12	13	36	44	63.5	52	51	130	4	565.7
	SC630-14	15	36	44	63.5	52	51	130	4	562.6
	SC630-16	17	36	44	63.5	52	51	130	4	559
	SC630-18	19	36	44	63.5	52	51	130	4	555
	SC630-20	21	36	44	63.5	52	51	130	4	550.6
SC630-22	23	36	44	63.5	52	51	130	4	545.8	
20	SC800-14	15	41.6	51.2	74	54	56	140	4.8	847.1
	SC800-16	17	41.6	51.2	74	54	56	140	4.8	842.8
	SC800-18	19	41.6	51.2	74	54	56	140	4.8	838
	SC800-20	21	41.6	51.2	74	54	56	140	4.8	832.8
21	SC1000-14	15	46.6	56.6	81.5	60	56	146	5	1,425.30
	SC1000-16	17	46.6	56.6	81.5	60	56	146	5	1,420.80
	SC1000-18	19	46.6	56.6	81.5	60	56	146	5	1,415.80
	SC1000-20	21	46.6	56.6	81.5	60	56	146	5	1,410.30
SC1000-22	23	46.6	56.6	81.5	60	56	146	5	1,410.30	

CRIMPING TOOLS

Item size (mm²)

1.5 - 10

6 - 16

10 - 25

10 - 35

> 35

Tools



LS-8



LS-16



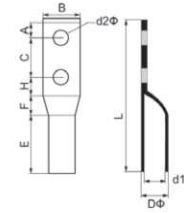
LS-22



LS-38



YQK-300



Material: Copper tube (Cu) 99% up Surface: Tin plated Range size (mm²): 10-1000

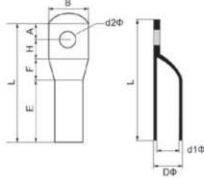
Items	Dimension (mm)										Thickness (mm)	Weight (g)
	d2	d1	D	A	B	C	E	F	H	L		
TTL10-6	6.2	4.5	6.2	7.5	12	44.4	21.5	7.4	9.5	90.3	0.85	10.45
TTL10-8	8.2	4.5	6.2	7.5	12	44.4	21.5	7.4	9.5	90.3	0.85	9.77
TTL10-10	10.2	4.5	6.2	7.5	14	44.4	21.5	7.4	9.5	90.3	0.85	8.95
TTL16-6	6.2	5.4	7.1	8	12	44.4	25	7.4	10	94.8	0.85	13
TTL16-8	8.2	5.4	7.1	8	12	44.4	25	7.4	10	94.8	0.85	12.32
TTL16-10	10.2	5.4	7.1	8	14	44.4	25	7.4	10	94.8	0.85	11.5
TTL16-12	12.2	5.4	7.1	8	16.5	44.4	25	7.4	10	94.8	0.85	10.3
TTL25-6	6.2	6.8	8.8	8.5	15	44.4	28.5	7.4	10.5	99.3	1	20.4
TTL25-8	8.2	6.8	8.8	8.5	15	44.4	28.5	7.4	10.5	99.3	1	19.6
TTL25-10	10.2	6.8	8.8	8.5	15	44.4	28.5	7.4	10.5	99.3	1	18.6
TTL25-12	12.2	6.8	8.8	8.5	16.5	44.4	28.5	7.4	10.5	99.3	1	17.2
TTL35-6	6.5	8.2	10.6	9	17	44.4	32	8	11	104.4	1.2	31.4
TTL35-8	8.5	8.2	10.6	9	17	44.4	32	8	11	104.4	1.2	30.6
TTL35-10	10.5	8.2	10.6	9	17	44.4	32	8	11	104.4	1.2	29.2
TTL35-12	12.5	8.2	10.6	9	17	44.4	32	8	11	104.4	1.2	27.6
TTL50-8	8.5	9.5	12.4	12.7	19	44.4	35	10.9	14.7	117.7	1.45	48.9
TTL50-10	10.5	9.5	12.4	12.7	19	44.4	35	10.9	14.7	117.7	1.45	47.3
TTL50-12	12.5	9.5	12.4	12.7	19	44.4	35	10.9	14.7	117.7	1.45	45.4
TTL50-14	15	9.5	12.4	12.7	21	44.4	35	10.9	14.7	117.7	1.45	42.7
TTL50-16	17	9.5	12.4	12.7	23	44.4	35	10.9	14.7	117.7	1.45	40.3
TTL70-8	8.5	11.2	14.7	13.9	21	44.4	35	10.9	17.9	122.1	1.75	73.1
TTL70-10	10.5	11.2	14.7	13.9	21	44.4	35	10.9	17.9	122.1	1.75	71.3
TTL70-12	12.5	11.2	14.7	13.9	21	44.4	35	10.9	17.9	122.1	1.75	69.1
TTL70-14	15	11.2	14.7	13.9	21	44.4	35	10.9	17.9	122.1	1.75	65.7
TTL70-16	17	11.2	14.7	13.9	24	44.4	35	10.9	17.9	122.1	1.75	62.7
TTL95-8	8.5	13.5	17.4	13.9	25.5	44.4	38	15.8	17.9	130	1.95	104.5
TTL95-10	10.5	13.5	17.4	13.9	25.5	44.4	38	15.8	17.9	130	1.95	102.5
TTL95-12	13	13.5	17.4	13.9	25.5	44.4	38	15.8	17.9	130	1.95	99.3

Material: Copper tube (Cu) 99% up Surface: Tin plated Range size (mm²): 10-1000

Items	Dimension (mm)										Thickness (mm)	Weight (g)
	d2	d1	D	A	B	C	E	F	H	L		
TTL95-14	15	13.5	17.4	13.9	25.5	44.4	38	15.8	17.9	130	1.95	96.3
TTL95-16	17	13.5	17.4	13.9	25.5	44.4	38	15.8	17.9	130	1.95	92.9
TTL120-8	8.5	15	19.4	13.9	28	44.4	40	18.8	17.9	135	2.2	136.8
TTL120-10	10.5	15	19.4	13.9	28	44.4	40	18.8	17.9	135	2.2	134.6
TTL120-12	13	15	19.4	13.9	28	44.4	40	18.8	17.9	135	2.2	131
TTL120-14	15	15	19.4	13.9	28	44.4	40	18.8	17.9	135	2.2	127.6
TTL120-16	17	15	19.4	13.9	28	44.4	40	18.8	17.9	135	2.2	123.8
TTL150-10	10.5	16.5	21.2	13.9	30.5	44.4	50	19.8	17.9	146	2.35	171.8
TTL150-12	13	16.5	21.2	13.9	30.5	44.4	50	19.8	17.9	146	2.35	168
TTL150-14	15	16.5	21.2	13.9	30.5	44.4	50	19.8	17.9	146	2.35	164.2
TTL150-16	17	16.5	21.2	13.9	30.5	44.4	50	19.8	17.9	146	2.35	160.2
TTL185-12	13	18.5	23.5	13.9	34	44.4	50	19.8	17.9	146	2.5	200.3
TTL185-14	15	18.5	23.5	13.9	34	44.4	50	19.8	17.9	146	2.5	196.3
TTL185-16	17	18.5	23.5	13.9	34	44.4	50	19.8	17.9	146	2.5	192.1
TTL185-18	19	18.5	23.5	13.9	34	44.4	50	19.8	17.9	146	2.5	187.1
TTL185-20	21	18.5	23.5	13.9	34	44.4	50	19.8	17.9	146	2.5	181.5
TTL240-12	13	21	26.5	13.9	38.5	44.4	56	24.8	17.9	157	2.75	270.7
TTL240-14	15	21	26.5	13.9	38.5	44.4	56	24.8	17.9	157	2.75	266.5
TTL240-16	17	21	26.5	13.9	38.5	44.4	56	24.8	17.9	157	2.75	261.5
TTL240-18	19	21	26.5	13.9	38.5	44.4	56	24.8	17.9	157	2.75	256.1
TTL240-20	21	21	26.5	13.9	38.5	44.4	56	24.8	17.9	157	2.75	250.1
TTL300-12	13	23.5	30	13.9	43.5	44.4	67	26.8	17.9	170	3.25	393.4
TTL300-14	15	23.5	30	13.9	43.5	44.4	67	26.8	17.9	170	3.25	388.4
TTL300-16	17	23.5	30	13.9	43.5	44.4	67	26.8	17.9	170	3.25	382.8
TTL300-18	19	23.5	30	13.9	43.5	44.4	67	26.8	17.9	170	3.25	376.2
TTL300-20	21	23.5	30	13.9	43.5	44.4	67	26.8	17.9	170	3.25	369
TTL400-12	13	28.5	36.5	13.9	53	44.4	67	26.8	17.9	170	4	592.4
TTL400-14	15	28.5	36.5	13.9	53	44.4	67	26.8	17.9	170	4	586.2
TTL400-16	17	28.5	36.5	13.9	53	44.4	67	26.8	17.9	170	4	579
TTL400-18	19	28.5	36.5	13.9	53	44.4	67	26.8	17.9	170	4	571
TTL400-20	21	28.5	36.5	13.9	53	44.4	67	26.8	17.9	170	4	562.2
TTL400-22	23	28.5	36.5	13.9	53	44.4	67	26.8	17.9	170	4	552.6
TTL500-12	13	30	39	13.9	56	44.4	75	33.8	17.9	185	4.5	773
TTL500-14	15	30	39	13.9	56	44.4	75	33.8	17.9	185	4.5	766
TTL500-16	17	30	39	13.9	56	44.4	75	33.8	17.9	185	4.5	758
TTL500-18	19	30	39	13.9	56	44.4	75	33.8	17.9	185	4.5	749.2
TTL500-20	21	30	39	13.9	56	44.4	75	33.8	17.9	185	4.5	739.2
TTL500-22	23	30	39	13.9	56	44.4	75	33.8	17.9	185	4.5	728.2

Material: Copper tube (Cu) 99% up Surface: Tin plated Range size (mm²): 10-1000

Items	Dimension (mm)										Thickness (mm)	Weight (g)
	d2	d1	D	A	B	C	E	F	H	L		
TTL630-12	13	34.5	44	16.5	63.5	44.4	80	37.8	20.5	199.2	4.75	1,004.70
TTL630-14	15	34.5	44	16.5	63.5	44.4	80	37.8	20.5	199.2	4.75	997.1
TTL630-16	17	34.5	44	16.5	63.5	44.4	80	37.8	20.5	199.2	4.75	988.7
TTL630-18	19	34.5	44	16.5	63.5	44.4	80	37.8	20.5	199.2	4.75	979.3
TTL630-20	21	34.5	44	16.5	63.5	44.4	80	37.8	20.5	199.2	4.75	968.7
TTL630-22	23	34.5	44	16.5	63.5	44.4	80	37.8	20.5	199.2	4.75	957.3
TTL800-14	15	40	51.2	16.5	74	44.4	85	41.8	25.5	213.2	5.6	1,470.30
TTL800-16	17	40	51.2	16.5	74	44.4	85	41.8	25.5	213.2	5.6	1,460.30
TTL800-18	19	40	51.2	16.5	74	44.4	85	41.8	25.5	213.2	5.6	1,449.30
TTL800-20	21	40	51.2	16.5	74	44.4	85	41.8	25.5	213.2	5.6	1,436.90
TTL1000-14	15	44	56.6	16.5	81.5	44.4	90	45	30.5	226.4	6.3	1,944.20
TTL1000-16	17	44	56.6	16.5	81.5	44.4	90	45	30.5	226.4	6.3	1,933.20
TTL1000-18	19	44	56.6	16.5	81.5	44.4	90	45	30.5	226.4	6.3	1,920.60
TTL1000-20	21	44	56.6	16.5	81.5	44.4	90	45	30.5	226.4	6.3	1,906.60

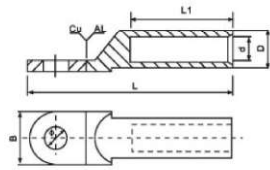


Material: Copper tube (Cu) 99% up Surface: Tin plated Range size (mm²): 10-1000

Items	Dimension (mm)										Thickness (mm)	Weight (g)
	d2	d1	D	A	B	C	E	F	L	H		
SCL10-6	6.2	4.6	6.2	7.5	12	21.5	7.4	9.5	45.9	0.8	5.15	10.45
SCL10-8	8.2	4.6	6.2	7.5	12	21.5	7.4	9.5	45.9	0.8	5.12	9.77
SCL10-10	10.2	4.6	6.2	7.5	14	21.5	7.4	9.5	45.9	0.8	5.09	8.95
SCL16-6	6.2	5.5	7.1	8	12	25	7.4	10	50.4	0.8	6.65	13
SCL16-8	8.2	5.5	7.1	8	12	25	7.4	10	50.4	0.8	6.62	12.32
SCL16-10	10.2	5.5	7.1	8	14	25	7.4	10	50.4	0.8	6.59	11.5
SCL16-12	12.2	5.5	7.1	8	16.5	25	7.4	10	50.4	0.8	6.57	10.3
SCL25-6	6.2	7	8.8	8.5	15	28.5	7.4	10.5	54.9	0.9	10.47	20.4
SCL25-8	8.2	7	8.8	8.5	15	28.5	7.4	10.5	54.9	0.9	10.33	19.6
SCL25-10	10.2	7	8.8	8.5	15	28.5	7.4	10.5	54.9	0.9	10.3	18.6
SCL25-12	12.2	7	8.8	8.5	16.5	28.5	7.4	10.5	54.9	0.9	10.3	17.2
SCL35-6	6.5	8.6	10.6	9	17	32	8	11	60	1	15.37	31.4
SCL35-8	8.5	8.6	10.6	9	17	32	8	11	60	1	15	30.6
SCL35-10	10.5	8.6	10.6	9	17	32	8	11	60	1	14.7	29.2
SCL35-12	12.5	8.6	10.6	9	17	32	8	11	60	1	14.7	27.6
SCL50-8	8.5	10	12.4	12.7	19	35	10.9	14.7	73.3	1.2	26.1	48.9
SCL50-10	10.5	10	12.4	12.7	19	35	10.9	14.7	73.3	1.2	25.5	47.3
SCL50-12	12.5	10	12.4	12.7	19	35	10.9	14.7	73.3	1.2	25.3	45.4
SCL120-10	10.5	15.8	19.4	13.9	28	40	18.8	17.9	90.6	1.8	76.7	42.7
SCL120-12	13	15.8	19.4	13.9	28	40	18.8	17.9	90.6	1.8	75.2	40.3
SCL120-14	15	15.8	19.4	13.9	28	40	18.8	17.9	90.6	1.8	73.8	73.1
SCL120-16	17	15.8	19.4	13.9	28	40	18.8	17.9	90.6	1.8	72.2	71.3
SCL150-10	10.5	17.4	21.2	13.9	30.5	50	19.8	17.9	101.6	1.9	100.1	69.1
SCL150-12	13	17.4	21.2	13.9	30.5	50	19.8	17.9	101.6	1.9	98.6	65.7
SCL150-14	15	17.4	21.2	13.9	30.5	50	19.8	17.9	101.6	1.9	97.1	62.7
SCL150-16	17	17.4	21.2	13.9	30.5	50	19.8	17.9	101.6	1.9	95.4	104.5
SCL185-12	13	19.1	23.5	13.9	34	50	19.8	17.9	101.6	2.2	126.5	102.5
SCL185-14	15	19.1	23.5	13.9	34	50	19.8	17.9	101.6	2.2	124.8	99.3
SCL185-16	17	19.1	23.5	13.9	34	50	19.8	17.9	101.6	2.2	122.9	96.3

Material: Copper tube (Cu) 99% up Surface: Tin plated Range size (mm²): 10-1000

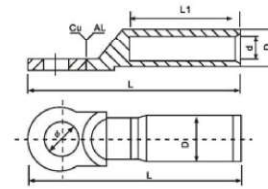
Items	Dimension (mm)										Thickness (mm)	Weight (g)
	d2	d1	D	A	B	C	E	F	L	H		
SCL185-18	19	19.1	23.5	13.9	34	50	19.8	17.9	101.6	2.2	120.6	92.9
SCL185-20	21	19.1	23.5	13.9	34	50	19.8	17.9	101.6	2.2	118.2	136.8
SCL240-12	13	21.9	26.5	15.9	38.5	56	24.8	19.9	116.6	2.3	174.1	134.6
SCL240-14	15	21.9	26.5	15.9	38.5	56	24.8	19.9	116.6	2.3	172.3	131
SCL240-16	17	21.9	26.5	15.9	38.5	56	24.8	19.9	116.6	2.3	170.3	127.6
SCL240-18	19	21.9	26.5	15.9	38.5	56	24.8	19.9	116.6	2.3	168	123.8
SCL240-20	21	21.9	26.5	15.9	38.5	56	24.8	19.9	116.6	2.3	165.4	171.8
SCL300-12	13	24.6	30	20	43	67	26.8	24	137.8	2.7	274.5	168
SCL300-14	15	24.6	30	20	43	67	26.8	24	137.8	2.7	272.4	164.2
SCL300-16	17	24.6	30	20	43	67	26.8	24	137.8	2.7	270	160.2
SCL300-18	19	24.6	30	20	43	67	26.8	24	137.8	2.7	267.3	200.3
SCL300-20	21	24.6	30	20	43	67	26.8	24	137.8	2.7	264.4	196.3
SCL400-12	13	29.9	36.5	23	53	67	26.8	27	143.8	3.3	427.9	192.1
SCL400-14	15	29.9	36.5	23	53	67	26.8	27	143.8	3.3	425.3	187.1
SCL400-16	17	29.9	36.5	23	53	67	26.8	27	143.8	3.3	422.5	181.5
SCL400-18	19	29.9	36.5	23	53	67	26.8	27	143.8	3.3	419.2	270.7
SCL400-20	21	29.9	36.5	23	53	67	26.8	27	143.8	3.3	415.5	266.5
SCL400-22	23	29.9	36.5	23	53	67	26.8	27	143.8	3.3	411.5	261.5
SCL500-12	13	31.8	39	23	56	75	33.8	27	158.8	3.6	551.1	256.1
SCL500-14	15	31.8	39	23	56	75	33.8	27	158.8	3.6	548.3	250.1
SCL500-16	17	31.8	39	23	56	75	33.8	27	158.8	3.6	545.1	393.4
SCL500-18	19	31.8	39	23	56	75	33.8	27	158.8	3.6	541.5	388.4
SCL500-20	21	31.8	39	23	56	75	33.8	27	158.8	3.6	537.5	382.8
SCL500-22	23	31.8	39	23	56	75	33.8	27	158.8	3.6	533.2	376.2
SCL630-12	13	36	44	26	63.5	80	37.8	30	173.8	4	759.5	369
SCL630-14	15	36	44	26	63.5	80	37.8	30	173.8	4	756.4	592.4
SCL630-16	17	36	44	26	63.5	80	37.8	30	173.8	4	752.8	586.2
SCL630-18	19	36	44	26	63.5	80	37.8	30	173.8	4	748.8	579
SCL630-20	21	36	44	26	63.5	80	37.8	30	173.8	4	744.4	571
SCL630-22	23	36	44	26	63.5	80	37.8	30	173.8	4	739.6	562.2
SCL800-14	15	41.6	51.2	29	74	85	41.8	33	188.8	4.8	1147.6	552.6
SCL800-16	17	41.6	51.2	29	74	85	41.8	33	188.8	4.8	1143.3	773
SCL800-18	19	41.6	51.2	29	74	85	41.8	33	188.8	4.8	1138.5	766
SCL800-20	21	41.6	51.2	29	74	85	41.8	33	188.8	4.8	1133.3	758
SCL1000-14	15	46.6	56.6	31	81.5	90	45	36	202	5	1425.3	749.2
SCL1000-16	17	46.6	56.6	31	81.5	90	45	36	202	5	1420.8	739.2
SCL1000-18	19	46.6	56.6	31	81.5	90	45	36	202	5	1415.8	728.2
SCL1000-20	21	46.6	56.6	31	81.5	90	45	36	202	5	1410.3	1,004.70



- **Material:** Copper & Aluminum
- **Range size (mm2):** 10 – 1000 mm2

DTL-1 Bimetallic Lug is suitable for aluminum to copper terminations.

Part No.	Φ	L	L1	B	D	d
DTL-1-16	8.35	67.8	25.7	16.25	10.93	6.9
DTL-1-25	8.43	74.9	32.5	18	12.2	7
DTL-1-35	10.3	83.5	38	20.22	14.05	8.35
DTL-1-50	10.3	90	40.88	23.3	16	10.22
DTL-1-70	12.5	102	47	26	18	11.6
DTL-1-95	12.45	111.75	51.15	28.66	20.9	13.75
DTL-1-120	14.4	23.2	50	29.7	23.05	15.25
DTL-1-150	14.3	123.4	57	39.4	29.6	21.65
DTL-1-185	16	133.3	56.9	37.65	27.2	18.67
DTL-1-240	16.2	142.38	59.1	40.8	29.9	20.8
DTL-1-300	19.8	158.95	67	45.88	34.3	22.65

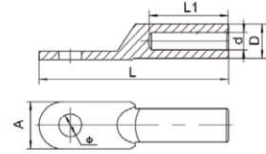


- **Material:** Copper & Aluminum
- **Range size (mm2):** 10 – 1000 mm2

DTL-2 Bimetallic Lug is suitable for aluminum to copper terminations.

Part No.	Φ	D	d	L	L1
DTL-2-16	10.4	12.3	5.4	76.7	37
DTL-2-25	10.4	16	6.5	88	42.6
DTL-2-35	10	16	8.8	89	41
DTL-2-50	12.95	20	9.3	86.3	42.7
DTL-2-70	13	20	11	91	43.8
DTL-2-95	12.7	20	12.5	90	42.8
DTL-2-120	12.85	25	13.5	114	55.5
DTL-2-150	12.9	25	15	111.2	58.4
DTL-2-185	12.8	32	17.5	124.6	60.2
DTL-2-240	12.8	32	19	129.8	58.5
DTL-2-300	12.8	34.25	23	132.6	63
DTL-2-400	16	39	26	155	85
DTL-2-500	21	40	30	165	82

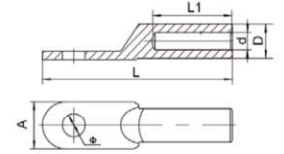
CABLE LUGS (DT) TYPE-1



Material: Copper tube **Range size (mm²):** 10-800

Part No.	Dimention (mm)						Weight (g)
	Φ	D	d	L	L1	A	
DT-10	8.5	9	5.5	62	28	15.8	23.0
DT-16		10	6.5	68	32	15.8	29.0
DT-25		11	7.4	70	34	18	35.0
DT-35	10.5	12	8.4	80	37	19.7	43.0
DT-50		14	10	85	40	23	65.0
DT-70	13	16	11.8	95	43	26	85.0
DT-95		18	13.5	104	49	28	117.5
DT-120	15	20	15	112	50	30	148.0
DT-150		22	17	120	56	34	190.0
DT-185	17	25	19	125	56	37	264.0
DT-240		27	21	136	62	40	335.0
DT-300	21	31	23.5	158	68	50	-
DT-400		34	27	160	70	50	-
DT-500		38	29.2	186	82	60	-
DT-630	According to customer requirements	45	34.5	215	85	60	-
DT-630		45	34.5	215	85	78	-
DT-800		50	38.5	260	90.00	100	-

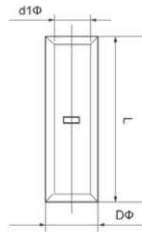
CABLE LUGS (DT) TYPE-2



Material: Copper tube **Range size (mm²):** 10-400

Part No.	Dimention (mm)						Weight (g)
	Φ	D	d	L	L1	A	
DT-10	8.5	9	6	60	26	15	14.5
DT-16		9	6	64	29	15	18.0
DT-25		10	7	67	32	16	22.5
DT-35	10.5	11	8.6	73	32	18	29.0
DT-50		13	9.6	80	34	20	42.5
DT-70	12.5	15	11.5	87	36	23	58.5
DT-95		17	13.5	99	40	26.5	80.0
DT-120	14.5	19	15	100	42	28	105.0
DT-150		21	16.6	109	47	30	142.5
DT-185	16.5	23	18.6	115	52	34.5	165.0
DT-240		26	21	121	53	37	220.0
DT-300	20	30	23	142	58	42	-
DT-400		32	26	155	64	48	-

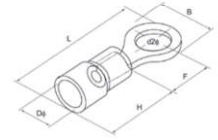
COPPER TUBE TERMINALS (SL)



Material: Copper tube (Cu) 99% up
Surface: Tin plated
Range size (mm²): 1.5-1000

No.	Items	Dimension (mm)			Thickness (mm)	Weight (g)
		d2	d1	D		
1	SL1.5	2.2		18	0.8	1.1
2	SL2.5	2.4	3.9	18	0.8	1.17
3	SL4-4	2.8	4.5	20	0.9	1.71
4	SL6	3.8	5.5	24	0.9	2.62
5	SL10	4.5	6.2	25	0.9	3.14
6	SL16	5.4	7.1	29	0.9	4.25
7	SL25	6.8	8.8	29	1	6.25
8	SL35	8.2	10.6	35	1.2	10.91
9	SL50	9.5	12.4	35	1.5	15.36
10	SL70	11.2	14.7	45	1.8	28.19
11	SL95	13.5	17.4	47	2	39.14
12	SL120	15	19.4	52	2.2	54.39
13	SL150	16.5	21.2	59	2.4	72.25
14	SL185	18.5	23.5	65	2.5	94.34
15	SL240	21	26.5	75	2.8	135.42
16	SL300	23.5	30	90	3.3	216.3
17	SL400	28.5	36.5	105	4	377.36
18	SL500	30	39	105	4.5	450.7
19	SL630	34.5	44	120	4.8	618.5
20	SL800	40	51.2	140	5.6	988.35
21	SL1000	44	56.6	160	6.3	1,401.70

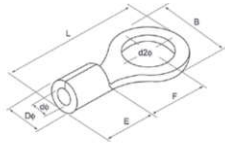
INSULATED TERMINALS (RV)



Insulation: Vinyl
Plating: Tin
Material: Copper or brass
Range size (mm²): 0.5 - 6

Items	Din (mm ²)	Dimension (mm)					
		d2	B	L	F	H	D
RV1.25-3	0.5-1.5	3.2	5.7	17.8	5.0	10.0	4.3
RV1.25-4	0.5-1.5	4.3	6.6	20.1	6.3	10.0	4.3
RV1.25-5	0.5-1.5	5.3	8.0	21.5	7.0	10.0	4.3
RV1.25-6	0.5-1.5	6.4	9.8	23	8.5	10.0	4.3
RV1.25-8	0.5-1.5	8.4	11.6	27.5	11.1	10.0	4.3
RV1.25-10	0.5-1.5	10.5	13.6	31.6	13.9	10.0	4.3
RV1.25-12	0.5-1.5	13.0	19.2	36.0	16.5	10.0	4.3
RV2-3	1.5-2.5	3.2	6.6	17.8	4.3	10.0	4.9
RV2-4	1.5-2.5	4.3	6.6	21	7.0	10.0	4.9
RV2-5	1.5-2.5	5.3	8.5	22.5	7.8	10.0	4.9
RV2-6	1.5-2.5	6.4	12	27.6	11.0	10.0	4.9
RV2-8	1.5-2.5	8.4	12	27.6	11.0	10.0	4.9
RV2-10	1.5-2.5	10.5	13.6	30.2	13.9	10.0	4.9
RV2-12	1.5-2.5	13.0	19.2	36.5	16.5	10.0	4.9
RV3.5-4	2.5-4	4.3	8.0	24.5	7.7	13.0	6.2
RV3.5-5	2.5-4	5.3	8.0	24.5	7.7	13.0	6.2
RV3.5-6	2.5-4	6.4	12.0	27.9	7.7	13.0	6.2
RV5.5-5	4-6	5.3	9.5	25.5	8.3	13.0	6.7
RV5.5-6	4-6	6.4	12.0	31.5	13.0	13.0	6.7
RV5.5-8	4-6	8.4	15.0	33.7	13.7	13.0	6.7
RV5.5-10	4-6	10.5	15.0	33.7	13.7	13.0	6.7
RV5.5-12	4-6	13	19.2	38.1	16.0	13.0	6.7

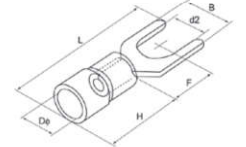
NON INSULATED TERMINALS (RNB)



Insulation: Copper or Brass
Plating: Tin
Material: Copper or brass
Range size (mm²): 0.5 - 6

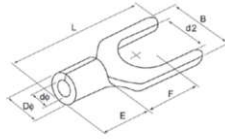
Items	Din (mm2)	Dimension (mm)						
		d2	B	L	F	E	D	d
RNB1.25-3	0.5-1.5	3	6	13	5	4.8	3.4	1.7
RNB1.25-4	0.5-1.5	4	7	14	6	4.8	3.4	1.7
RNB1.25-5	0.5-1.5	5.3	8	15.8	7	4.8	3.4	1.7
RNB1.25-6	0.5-1.5	6.4	11.6	21.8	11	4.8	3.4	1.7
RNB1.25-8	0.5-1.5	8.4	11.6	21.8	11	4.8	3.4	1.7
RNB1.25-10	0.5-1.5	10.5	13.6	25.5	14	4.8	3.4	1.7
RNB1.25-12	0.5-1.5	13	19.2	31	17	4.8	3.4	1.7
RNB2-3	1.5-2.5	3.2	6.6	12.3	4	4.8	4.1	2.3
RNB2-4	1.5-2.5	4.3	6.6	16	7	4.8	4.1	2.3
RNB2-5	1.5-2.5	5.3	8.5	16.8	8	4.8	4.1	2.3
RNB2-6	1.5-2.5	6.4	12	21.8	11	4.8	4.1	2.3
RNB2-8	1.5-2.5	8.4	12	21.8	11	4.8	4.1	2.3
RNB2-10	1.5-2.5	10.5	13.6	25.5	14	4.8	4.1	2.3
RNB2-12	1.5-2.5	13	19.2	31	17	4.8	4.1	2.3
RNB3.5-4	2.5-4	4.3	8	18	8	6	5	3
RNB3.5-5	2.5-4	5.3	8	18	8.00	6	5	3
RNB3.5-6	2.5-4	6.4	12	21.4	8	6	5	3
RNB5.5-5	4-6	5.3	9.5	19.8	8	6.8	5.6	3.4
RNB5.5-6	4-6	6.4	12	25.8	13	6.8	5.6	3.4
RNB5.5-8	4-6	8.4	15	28	14	6.8	5.6	3.4
RNB5.5-10	4-6	10.5	15	28	14	6.8	5.6	3.4
RNB5.5-12	4-6	13	19.2	32.4	16	6.8	5.6	3.4

INSULATED TERMINALS (SV)



Insulation: Vinyl
Plating: Tin
Material: Copper or brass
Range size (mm²): 0.5 - 6

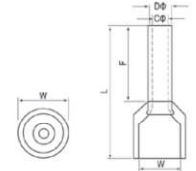
Items	Din (mm2)	Dimension (mm)					
		d2	B	L	F	H	D
SV1.25-3	0.5-1.5	3.2	5.7	21.2	6.5	10.0	4.3
SV1.25-4	0.5-1.5	4.3	6.4	21.2	6.5	10.0	4.3
SV1.25-5	0.5-1.5	5.3	8.1	21.2	6.5	10.0	4.3
SV1.25-6	0.5-1.5	6.4	9.5	21.2	6.5	10.0	4.3
SV1.25-8	0.5-1.5	-	-	-	-	10.0	4.3
SV1.25-10	0.5-1.5	-	-	-	-	10.0	4.3
SV1.25-12	0.5-1.5	-	-	-	-	10.0	4.3
SV2-3	1.5-2.5	3.2	5.7	21.2	6.5	10.0	4.9
SV2-4	1.5-2.5	4.3	6.4	21.2	6.5	10.0	4.9
SV2-5	1.5-2.5	5.3	8.1	21.2	6.5	10.0	4.9
SV2-6	1.5-2.5	6.4	9.5	21.2	6.5	10.0	4.9
SV2-8	1.5-2.5	-	-	-	-	10.0	4.9
SV2-10	1.5-2.5	-	-	-	-	10.0	4.9
SV3.5-4	2.5-4	4.3	8.0	24.8	7.0	13.0	6.2
SV3.5-5	2.5-4	5.3	8.0	24.8	7.0	13.0	6.2
SV3.5-6	2.5-4	6.4	8.0	24.8	7.0	13.0	6.2
SV5.5-5	4-6	5.3	9.0	25.2	7.5	13.0	6.7
SV5.5-6	4-6	6.4	9.0	25.2	7.5	13.0	6.7
SV5.5-8	4-6	8.4	14.0	30.0	11.5	13.0	6.7
SV5.5-10	4-6	-	-	-	-	13.0	6.7
RV5.5-10	4-6	10.5	15.0	33.7	13.7	13.0	6.7
RV5.5-12	4-6	13	19.2	38.1	16.0	13.0	6.7



Insulation: Copper or Brass
Plating: Tin
Material: Copper or brass
Range size (mm²): 0.5 - 6

Welding connector with copper material only

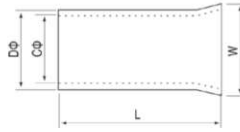
Items	Din (mm2)	Dimension (mm)						
		d2	B	L	F	E	D	d
SNB1.25-3	0.5-1.5	3.2	5.7	16	7	4.8	3.4	1.7
SNB1.25-4	0.5-1.5	4.3	6.4	14	7	4.8	3.4	1.7
SNB1.25-5	0.5-1.5	5.3	8.1	16	7	4.8	3.4	1.7
SNB1.25-6	0.5-1.5	6.4	9.5	18	7	4.8	3.4	1.7
SNB1.25-8	0.5-1.5	-	-	-	-	4.8	3.4	1.7
SNB1.25-10	0.5-1.5	-	-	-	-	4.8	3.4	1.7
SNB1.25-12	0.5-1.5	-	-	-	-	4.8	3.4	1.7
SNB2-3	1.5-2.5	3.2	5.7	12.4	7	4.8	4.1	2.3
SNB2-4	1.5-2.5	4.3	6.4	14.6	7	4.8	4.1	2.3
SNB2-5	1.5-2.5	5.3	8.1	16.4	7	4.8	4.1	2.3
SNB2-6	1.5-2.5	6.4	9.5	18.4	7	4.8	4.1	2.3
SNB2-8	1.5-2.5	-	-	-	-	4.8	4.1	2.3
SNB2-10	1.5-2.5	-	-	-	-	4.8	4.1	2.3
SNB3.5-4	2.5-4	4.3	8	18.3	7	6	5	3
SNB3.5-5	2.5-4	5.3	8	18.3	7	6	5	3
SNB3.5-6	2.5-4	6.4	12	21.5	12.00	6	5	3
SNB5.5-5	4-6	5.3	9	19.5	8	6.8	5.6	3.4
SNB5.5-6	4-6	6.4	9	19.5	8	6.8	5.6	3.4
SNB5.5-8	4-6	8.4	14	25.5	8	6.8	5.6	3.4
SNB5.5-10	4-6	-	-	-	-	6.8	5.6	3.4



Insulation: P,P **Metal:** Copper or Brass

CE RoHS

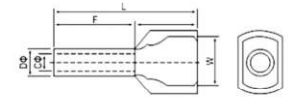
Wire Range mm2 (A.W.G.)	Item No.	Dimension(mm)					Pcs/ Pack	Insulating tube color	
		F	L	W	DΦ	CΦ		German	French
0.5(22)	E 0508	8.0	14.0	2.6	1.3	1.0	1000	Orange	White
0.75(20)	E 7508	8.0	14.6	2.8	1.5	1.2	1000	White	Blue
1.0(18)	E 1008	8.0	14.6	3.0	1.7	1.4	1000	Yellow	Red
1.5(16)	E 1508	8.0	14.6	3.5	2.0	1.7	1000	Red	Black
2.5(14)	E 2508	8.0	15.2	4.0	2.6	2.3	1000	Blue	Gray
4.0(12)	E 4009	9.0	16.5	4.4	3.2	2.8	1000	Gray	Orange
6.0(10)	E 6012	12.0	20.0	6.3	3.9	3.5	1000	Black	Green
10.0(7)	E 10-12	12.0	21.5	7.6	4.9	4.5	1000	Milk	Brown
16.0(5)	E 16-12	12.0	22.2	8.8	6.2	5.8	500	Green	Milk
	E 25-16	16.0	29.0					11.2	7.9
25.0(4)	E 25-22	22.0	35.0				250		
35.0(2)	E 35-16	16.0	30.0	12.7	8.7	8.3	250	Gray	
50.0(1)	E 50-25	25.0	41.0	15.3	10.9	10.3	250	Olive	



Insulation: Copper or Brass
Plating: Tin
Material: Copper or brass
Range size (mm²): 0.5 - 6

Welding connector with copper material only

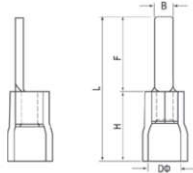
Wire Range mm ² (A.W.G.)	Item No.	Dimension (mm)				Pcs/Pack
		L	Dφ	Cφ	W	
0.5(22)	EN 0508	8	1.3	1	1.7	10000
0.75(20)	EN 7508	8	1.5	1.2	1.9	10000
1.0(18)	EN 1008	8	1.7	1.4	2.2	10000
1.5(16)	EN1508	8	2	1.7	2.5	10000
2.5(14)	EN 2508	8	2.6	2.3	3.3	10000
4.0(12)	EN 4009	9	3.2	2.8	3.9	5000
6.0(10)	EN 6012	12	3.9	3.5	4.8	5000
10.0(7)	EN 10-12	12	4.9	4.5	5.8	2500
16.0(5)	EN 16-12	12	6.2	5.8	7.2	2000
25.0(4)	EN 25-16	16	7.9	7.5	9.1	1000
	EN 25-22	22				
35.0(2)	EN 35-16	16	8.7	8.3	10.2	500
50.0(1)	EN 50-25	25	10.9	10.3	12.4	500



Insulation: P,P
Metal: Copper or Brass

Item No.	Conductor (mm ²)	Dimension(mm)						Color
		F	L	W	B	D	C	
TE0508	2x0.5	8	14.5	5	6.5	1.8	1.5	White
TE7508	2 x 0.75	8	14.7	5	6.7	2.1	1.8	• Blue • Gray
TE7510	2x0.75	10	16.7	5.5	6.7	2.1	1.8	
TE1008	2x1	8	15.1	5.5	7.1	2.3	2	• Red
TE1010	2x1	10	17.1	5.5	7.1	2.3	2	
TE1508	2x1.5	8	15.5	6.4	7.2	2.6	2.3	• Black • Yellow
TE1512	2x1.5	12	19.5	6.4	7.5	2.6	2.3	
TE2510	2x2.5	10	18.5	8	8.5	3.3	2.9	• Blue • Gray
TE2513	2x2.5	13	21.5	8	8.5	3.3	2.9	
TE4012	2x4	12	23.1	8.8	11.1	4.2	3.8	• Orange • Gray
TE6014	2x6	14	26.1	9.5	12.1	5.3	4.9	

INSULATED TERMINALS (DBV)

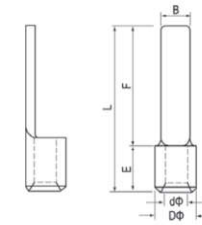


Insulation: Vinyl
Material: Copper or brass
Plating: Tin
Range size (mm²): 0.5 - 6

Welding connector with copper material only

Items	Din (mm ²)	Dimension (mm)				
		B	L	F	H	DΦ
DBV1.25-10	2.3	20	10	10	4.3	1.7
DBV1.25-14	3	24	14	10	4.3	1.7
DBV1.25-18	2.3	28	18	10	4.3	1.7
DBV2-10	2.3	20	10	10	4.9	1.7
DBV2-14	3	24	14	10	4.9	1.7
DBV2-18	2.3	28	18	10	4.9	1.7
DBV5.5-10	2.8	23	10	13	6.7	1.7
DBV5.5-14	4.5	27	14	13	6.7	2.3
DBV5.5-18	4.5	31	18	13	6.7	2.3

NON INSULATED TERMINALS (DBN)

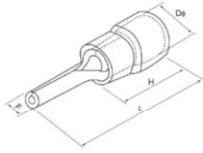


Material: Copper or brass
Plating: Tin
Range size (mm²): 0.5 - 6

Welding connector with copper material only

Items	Din (mm ²)	Dimension (mm)					
		B	L	F	E	DΦ	dΦ
DBN 1.25-10	2.3	14.8	10	4.8	3.4	1.7	1.7
DBN 1.25-11	3	15.8	11				
DBN 1.25-14	3	18.8	14				
DBN 1.25-18	2.3	22.8	18	4.8	4.1	2.3	
DBN 2-10	2.3	14.8	10				
DBN 2-14	3	18.8	14	6.8	5.6	3.4	
DBN 2-18	2.3	22.8	18				
DBN 5.5-10	2.8	16.8	10				6.8
DBN 5.5-14	4.5	20.8	14.00				
DBN 5.5-18	4.5	24.8	18				
DBN 8-14	5	22.5	14	8.5 10.5	7.2 9	4.5 5.8	2.3
DBN 14-16	6	26.5	16				

INSULATED TERMINALS (PTV)

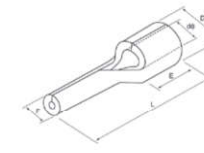


Insulation: Vinyl
Material: Copper or brass
Plating: Tin
Range size (mm²): 0.5 - 6

Welding connector with copper material only

Items	Dimension (mm)					
	F	L	W	H	D	Size
PTV1.25-10	1.9	20	10	10	5.5	0.5-1.5
PTV1.25-13	1.9	23	13	10	5.5	0.5-1.5
PTV2-10	1.9	20	10	10	6.8	2.5-4
PTV2-13	1.9	23	13	10	6.8	2.5-4
PTV5.5-13	2.8	26	13	13	7.9	4.0-6

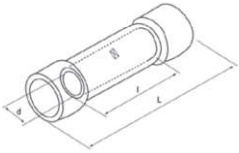
NON INSULATED TERMINALS (PTN)



Material: Copper or brass
Plating: Tin
Range size (mm²): 0.5 - 6

Welding connector with copper material only

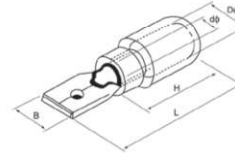
Items	Dimension (mm)				
	F	L	E	Dφ	dφ
PTN 1.25-9	1.9	13.8	4.8	3.4	1.7
PTN 1.25-10	1.9	14.8			
PTN 1.25-12	1.9	16.8			
PTN 1.25-13	1.9	17.8			
PTN 1.25-18	1.9	22.8			
PTN 2-9	1.9	13.8	4.8	4.1	2.3
PTN 2-10	1.9	14.8			
PTN 2-12	1.9	16.8			
PTN 2-13	1.9	17.8			
PTN 2-18	1.9	22.8			
PTN 3.5-10	2.8	16.0	6	5	3
PTN 3.5-13	2.8	19.0			
PTN 5.5-13	2.8	19.0			



Insulation: Vinyl
Raw material: Copper or Brass
Plating: Tin



Item No.	Wire Range	Dimension(mm)			Imax.	Color
	mm2 (A.W.G.)	l	d	L		
BV 1.25	0.5-1.5(22-16)	15	1.8	25.5	19A	Red
BV 2	1.5-2.5(16-14)	15	2.4	25.5	27A	Blue
BV 5.5	4-6(12-10)	15	3.6	27.5	48A	Yellow
BV 8	6-10(8)	21	4.7	32.0	62A	Red
BV 14	10-16(6)	26.0	5.8	42.0	88A	Blue
BV 22	16-25(4)	29.0	7.7	50.0	115A	Yellow
BV 38	25-35(2)	32.0	9.4	55.0	160A	Red

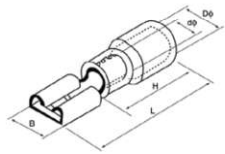


Insulation: Vinyl
Raw material: Brass
Plating: Tin



Item No.	Wire Range	Connecting spec. (mm)	Thickness (mm)	Dimension(mm)					Color
	mm2 (A.W.G.)			B	dΦ	DΦ	L	H	
MDD 1.25-110(5)	0.5-1.5 (22-16)	0.5 x 2.8	0.5	2.8	1.7	4.3	17.7	10.0	Red
MDD 1.25-110(8)		0.8 x 2.8	0.8	2.8	1.7	4.3	17.7	10.0	
MDD 1.25-187(5)		0.5 x 4.75	0.5	4.75	1.7	4.3	20.0	10.0	
MDD 1.25-187(8)		0.8 x 4.75	0.8	4.75	1.7	4.3	20.0	10.0	
MDD 1.25-250	1.5-2.5 (16-14)	0.8 x 6.35	0.4	6.35	1.7	4.3	21.0	10.0	Blue
MDD 2-110(5)		0.5 x 2.8	0.5	2.8	2.3	4.9	17.7	10.0	
MDD 2-110(8)		0.8 x 2.8	0.8	2.8	2.3	4.9	17.7	10.0	
MDD 2-187(5)		0.5 x 4.75	0.5	4.75	2.3	4.9	20.0	10.0	
MDD 2-187(8)	4-6 (12-10)	0.8 x 4.75	0.8	4.75	2.3	4.9	20.0	10.0	Yellow
MDD 2-250		0.8 x 6.35	0.4	6.35	2.3	4.9	21.0	10.0	
MDD5.5-187(5)		0.5 x 4.75	0.5	4.75	3.4	6.7	23.0	13.0	
MDD 5.5-250		0.8 x 6.35	0.4	6.35	3.4	6.7	25.0	13.0	

FEMALE PRE-INSULATING JOINT (FDD)

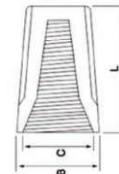


Insulation: Vinyl
Raw material: Brass
Plating: Tin



Item No.	Wire Range mm ² (A.W.G.)	Connecting spec. (mm)	Thickness (mm)	Dimension(mm)					Color
				B	dφ	Dφ	L	H	
FDD 1.25-110(5)	0.5-1.5 (22-16)	0.5 x 2.8	0.3	3.8	4.3	1.7	19.0	10.0	Red
FDD 1.25-110(8)		0.8 x 2.8	0.3	3.8	4.3	1.7	19.0	10.0	
FDD 1.25-187(5)		0.5 x 4.75	0.35	5.6	4.3	1.7	19.0	10.0	
FDD 1.25-187(8)		0.8 x 4.75	0.35	5.6	4.3	1.7	19.0	10.0	
FDD 1.25-205		0.5 x 5.2	0.35	6.5	4.3	1.7	20.0	10.0	
FDD 1.25-250		0.8 x 6.35	0.4	7.4	4.3	1.7	21.0	10.0	
FDD 2-110(5)	1.5-2.5 (16-14)	0.5 x 2.8	0.3	3.8	4.9	2.3	19.0	10.0	Blue
FDD 2-110(8)		0.8 x 2.8	0.3	3.8	4.9	2.3	19.0	10.0	
FDD 2-187(5)		0.5 x 4.75	0.35	5.6	4.9	2.3	19.0	10.0	
FDD 2-187(8)		0.8 x 4.75	0.35	5.6	4.9	2.3	19.0	10.0	
FDD 2-205		0.5 x 5.2	0.35	6.5	4.9	2.3	20.0	10.0	
FDD 2-250		0.8 x 6.35	0.4	7.4	4.9	2.3	21.0	10.0	
FDD 2-312	4-6 (12-10)	0.8 x 8.0	0.4	9.0	4.9	2.3	23.0	10.0	Yellow
FDD 5.5-187(5)		0.5 x 4.75	0.4	5.6	6.7	3.4	23.0	13.0	
FDD 5.5-312		0.8 x 8.0	0.5	9.0	6.7	3.4	27.0	13.0	
FDD 5.5-250		0.8 x 6.35	0.4	7.4	6.7	3.4	24.0	13.0	
FDD 5.5-375		1.2 x 9.4	0.5	10.9	6.7	3.4	29.6	13.0	

WIRE NUT CONNECTOR (SP)

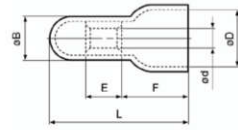


Insulation: Vinyl
Raw material: Brass
Plating: Tin



Item No.	Cable Range		Dimension(mm)			Color
			B	C	L	
SP71	Min 0.75 x 1 + 0.5 x 1	Max 1.5 x 2	8.5	6.7	15	Gray
SP72	Min 0.75 x 3	Max 1.5 x 3	10.1	7.4	17.5	Blue
SP73	Min 0.75 x 3	Max 1.5 x 3 + 1 x 1	12.6	9.9	22.1	Orange
SP74	Min 0.25x 1 + 0.75x1	Max 2.5 x 4 + 0.75 x 1	13.7	11	24.5	Yellow
SP75	Min 0.25 x 2	Max 6 x 2 + 4 x 2	16	13	26.5	Red

CORD-END TWIN SLEEVES (CE)



Insulation: Vinyl
Raw material: Brass
Plating: Tin



Applicable Wire		Part No.	Dimension(mm)					
AWG#	Wires Cross Section (mm ²)		L	F	E	Φd	ΦB	ΦD
22 to 16	(0.5 to 1.75)	CE1(CE-100)	20.8	9.5	7	2.4	5	6.5
16 to 14	(1.0 to 3.0)	CE2(CE-230)	21	9.5	7.3	3	5.7	8
12 to 10	(2.5 to 6.0)	CE5(CE-550)	27	12	8.5	3.8	7.2	9.5
8	(4.0 to 9.0)	CE8(CE-800)	28	12	9.5	4.5	9.3	12

PLUG-IN TERMINAL BLOCK (CMK)



Item No.	CMK-412	CMK-413	CMK-415
Flexible lead 0.08-2.5(mm ²) 28-14(AWG). Rigidity lead 0.08-4(mm ²) 28-12(AWG)			
Connection method	Cage clamp® connection		
Current:	32A		
Voltage	400V		
Color	Grey		
No. of connection Points	2	3	5
Wiring type	Side Entry		

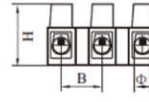
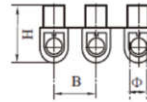
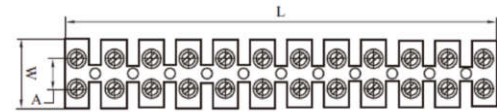
Material:

PE, Working Temperature:
- 40°C to 65°C, short time is 80°C.

PP, Working Temperature:
- 30°C to 90°C, short time is 110°C.

PA, Working Temperature:
- 35°C to 120°C, short time is 140°C.

Brass, Iron screw
Voltage: 250 - 450V



U Type

H Type

U TYPE



Item No.	L (mm)	W (mm)	H (mm)	A (mm)	B (mm)	Φ (mm)	Rated Voltage	Rated Current	Wire Range (mm ²)
TBS-3A	90.3	15.5	11.5	6	7.7	3.1	380V	3A	2.5-4.0
TBS-6A	110.5	15.5	12.4	6.5	9.5	3.2	380V	6A	4.0-6.0
TBS-10A	116.7	20	14.9	8	10	4	380V	10A	6.0-10.0
TBS-16A	136.8	21.5	16.7	10	11.7	4.2	380V	16A	10.0-12.0
TBS-20A	153.5	24.5	17.4	11.5	13.2	4.3	380V	20A	12.0-14.0
TBS-30A	164.6	25	18.8	12	14.1	5.5	380V	30A	16
TBS-60A	187.6	29	23.5	12	16	6.8	380V	60A	25
TBS-80A	205	33	27	15	17	7.0	400V	80A	35
TBS-100A	250	46	31	22	21	9.0	400V	100A	40

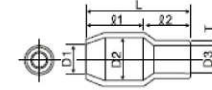
H TYPE



Item No.	L (mm)	W (mm)	H (mm)	A (mm)	B (mm)	Φ (mm)	Rated Voltage	Rated Current	Wire Range (mm ²)
TBS-3A	90.3	15.5	12	6	7.8	3.1	380V	3A	2.5-4.0
TBS-6A	111.4	15.5	13.5	6.5	9.6	3.2	380V	6A	4.0-6.0
TBS-10A	116.4	20	15.3	8	10	4	380V	10A	6.0-10.0
TBS-16A	133.8	22.7	16	10	11.5	4.2	380V	16A	10.0-12.0
TBS-20A	152.2	24.6	16	11.5	13.2	4.3	380V	20A	12.0-14.0
TBS-30A	162	25	19.3	12	13.9	5.5	380V	30A	16
TBS-60A	184.6	28.6	23	12	15.8	6.8	380V	60A	25



COLOR: 



Material: Made from PVC
Character: Clearly color, shine, soft, insulated
Color: Red, white, blue yellow, black, green, brown available upon special request.



Item No.	Dimension(mm)				
	D1	D2	D3	L	F
V 125	2.8	3.3	3.1	13	7
V 2	3.3	4.5	3.7	15	7
V 3.5	4.2	5.7	4.1	20	8
V 5.5	4.8	5.7	5.2	20	8
V 8	6.2	7.2	6.2	20	9
V 14	7.5	10	8	27	11
V 22	10.5	12	9.5	30	15
V 38	12.5	14	11.8	36	16.5
V 60	15	16.8	13.5	39	19
V 70	16	17.5	14.5	43	20
V 80	17	19	16	47	22
V100	19	22	18	54	24
V 125	21	24	20	57	25
V 150	23	24.5	22	65	30
V 200	27	32	24	65	30
V 240	29	38	26.5	77	39
V 325	29	38	29	77	40
V 400	42	45	36	85	41
V 500	46	48	40	88	42
V 630	52	23-Feb	44	92	47