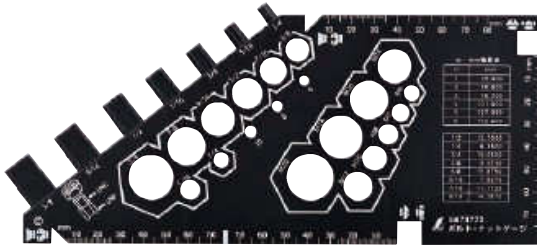
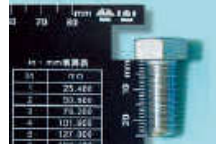


Carpenter's Squares
 Stainless Steel Rules/ Machine Scale
 Aluminum Rules
 Resin Rules/ Bamboo Rules
 Squares/ Protractors
 Vernier Calipers/ Micrometers
 Tape Measures
 Surveying Products
 Scales
 Levels
 Lasers/ Optical Equipment
 Inklines/ Chalklines/ Plumblines
 Circular Saw Guides
 Construction Tools
 Industrial Tools
 Thermometers/ Hygrometers/ Humidity Measuring Instruments
 Outdoor Products
 Magnifying Glasses
 Drawing Tools
 Magnets

Bolt and Nut Gauge



73773

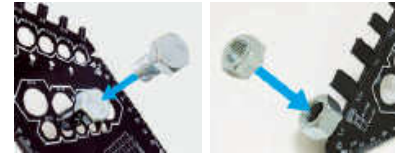


Easily measures the length as well

Item Code	Description	Body Size (mm)	Weight (g)	JAN Code	Packing Unit	Package
73773	Bolt and Nut Gauge	107×237×6	55	4 960910 737730	10	SP

Features

- Easily measure size of nut bolt just by putting on the gauge
- Measures different shapes of screws
- Inch/mm converting chart



Use

- For measuring size of bolt and nut

Specifications

Material	ABS resin
----------	-----------

Feeler Gauge



Item Code	Description	Body Size (mm)	Weight (g)	JAN Code	Packing Unit	Package
73776	A 75 mm 9 Leaves	81×13×5	20	4 960910 737761	10	SP
73780	B 100 mm 9 Leaves	109×13×5	27	4 960910 737808		
73781	C 150 mm 9 Leaves	156×13×5	40	4 960910 737815		
73782	D 65 mm 25 Leaves	70×14×15	63	4 960910 737822	5	SP
73796	E 100 mm 25 Leaves	105×13×17	95	4 960910 737969		
73797	F 150 mm 25 Leaves	153×13×17	140	4 960910 737976		

Features

- Variety of different length and leaves available
- Comes with portable plastic case

Use

- For clearance gap measurement

Specifications

	73776	73780	73781	73782	73796	73797
Thickness Tolerance	Over 0.03 mm below 0.15 mm: ±0.005 mm Over 0.15 mm below 0.50 mm: ±0.012 mm Over 0.50 mm below 3.00 mm: ±0.020 mm					
Leaf Thickness (mm)	0.30	0.04	0.05		1.00	0.03
	0.06	0.07	0.08		0.05	0.06
					0.08	0.09
					0.11	0.12
					0.14	0.15
					0.25	0.30
					0.40	0.45
					0.60	0.75
					0.90	0.80
Material	Leaf: Carbon tool steel					

*Thickness tolerance is the tolerance for one leaf. In the case of use with multiple leaves, the tolerance is added together.

Digital Thickness Caliper



73746



Item Code	Description	Body Size (mm)	Weight (g)	JAN Code	Packing Unit	Package
73746	A 0.01 mm/10 mm with Handle	125×100×26	216	4 960910 737464	1	SP

Features

- Digital display for quick reading
- Easy-to-read 12 mm character height LCD
- ZERO set switch gives a reference point and makes comparison measurement
- Large handle makes easy holding
- Auto power off function
- Special case included

Use

- For measuring thin objects such as cloth or leather

Specifications

Measuring Range	0 - 10 mm
Graduation	0.01 mm
Indication Error	±0.02 mm
Maximum Insert Depth	30 mm
Measuring Force	1.1 N or less
Parallelism between Gauge Head and Anvil	±8 μm
Diameter of Gauge Head and Anvil	φ10 mm
Power Source	1x silver oxide battery SR44 (Battery included is for trial use) (only and may not last as long)
Auto Power Off	Approximately 5 min.
Material	Body: ABS resin Lever: Iron Handle: Cast iron Spindle, Gauge Head, Anvil: Stainless steel

NEW New catalog items **JIS** JIS mark **mm** cm/shaku (Upper size for Front metric / Lower size for Back shaku) **shaku** shaku/cm (Upper size for Front shaku / Lower size for Back metric) **W** With non-slip pad **R** With red numbers **G** With grid scale **L** Vial with luminous sheet **M** With magnet **TH** Thermometer/Hygrometer

T Thermometer **H** Hygrometer **H** With hanging hole **E** Letters in English **J** Letters in Japanese **Z** Japanese zodiac signs **S** With stopper **D** With direction arrow **O** Oil **B** With battery **E** With edge **D** Double-sided tape **G** Glass lens **P** Plastic lens