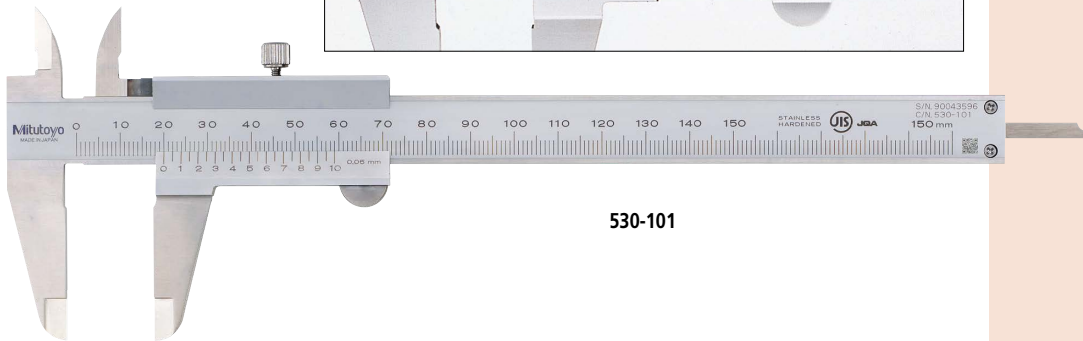
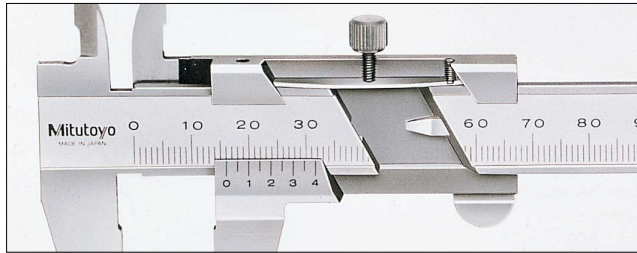
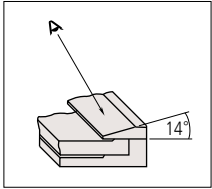


Calipers

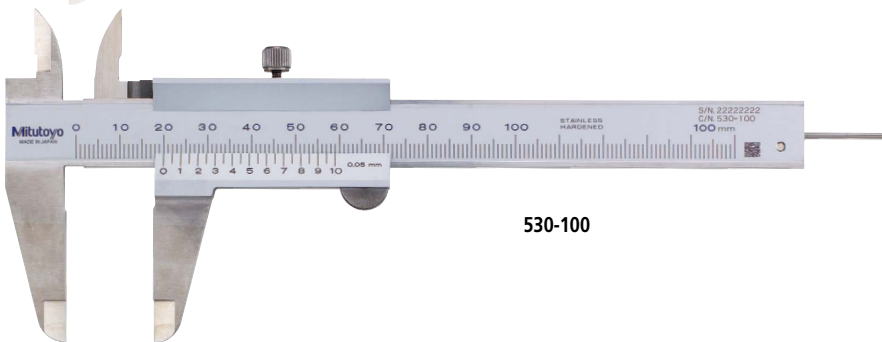
An industry standard measuring tool

Vernier Caliper 530 Series — Standard model

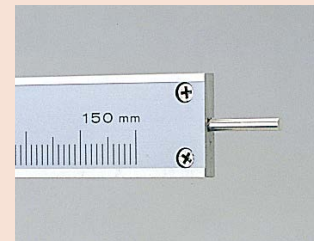
- Plain and basic design.
- Stepped graduation face prevents dust ingress between the main scale and slider.
- The small vernier face angle (14°) provides easy reading.
- Can measure outside and inside dimensions, depth, and steps.
- Carbide-tipped jaw calipers are optimal for rough finished parts, castings, grinding stones, etc.
- Decimal and fractional graduated scales (metric/inch and inch models only).



530-101



530-100



530-102 (Round depth bar type)

DIMENSIONS

Unit: mm

Range (mm)	Outside jaw thickness
0 - 100	3
0 - 150	3
0 - 200	3
0 - 300	3.8
0 - 600	6
0 - 1000	8

Range (mm)	A	B	D	E	F	H	L
0 - 100	17	21.5	40	53.5	30	16	182
0 - 150	17	21.5	40	53.5	30	16	229
0 - 200	20.5	25	50	53.5	30	16	288
0 - 300	22	27.5	64	66.5	36	20	404
0 - 600	38	47	90	89	50	25	780
0 - 1000	50	60	130	111	61	32	1240

Note: Order No. 530-100 and No. 530-102 incorporate a round depth bar (ø1.9 mm).
The depth bar shown in the illustration above is a different type.



530-320
(Carbide-tipped jaws for outside measurement)

Technical Data

Graduation: 0.05 mm, 0.05 mm (1/128 in) or 0.001 in (1/128 in)
 High accuracy type:
 0.02 mm or 0.02 mm (0.001 in)

SPECIFICATIONS

Metric				
Order No.	Range (mm)	Maximum Permissible Error (mm) •EMPE (outside measurement) •SMPE (inside measurement)	Depth bar	Remarks
530-101	0 - 150	±0.05	Blade	—
530-122*		±0.03		High accuracy model
530-108	0 - 200	±0.05		—
530-123*		±0.03		High accuracy model
530-109	0 - 300	±0.08		—
530-124*		±0.04		High accuracy model

Order No.	Range (mm)	Accuracy (mm)	Depth bar	Remarks
530-100	0 - 100	±0.05	ø1.9 mm rod	—
530-102		±0.05		—
530-320	0 - 150	±0.05	Blade	Carbide-tipped jaws for outside measurement
530-335		±0.05		Carbide-tipped jaws for outside and inside measurement
530-321	0 - 200	±0.05		Carbide-tipped jaws for outside measurement
530-322	0 - 300	±0.08		Carbide-tipped jaws for outside measurement
530-501	0 - 600	±0.10	—	—
530-502	0 - 1000	±0.15	—	—

* Graduation: 0.02 mm

Metric/Inch with metric/inch double scale

Order No.	Range (mm)	Accuracy (mm)	Depth bar	Graduation (in)	Remarks
530-104	0 - 150	±0.05	Blade	1/128	—
530-316		±0.03		1/128	Clamping screw below the slider
530-312*		±0.03		0.001	High accuracy model: ±0.03 mm
530-114	0 - 200	±0.05		1/128	—
530-118*		±0.03		0.001	High accuracy model: ±0.03 mm
530-115	0 - 300	±0.08		1/128	—
530-119*		±0.04	0.001	High accuracy model: ±0.04 mm	

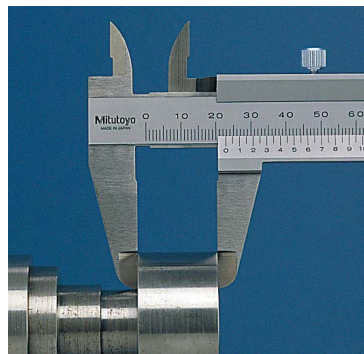
* Graduation: 0.02 mm

Inch with inch/inch double scale

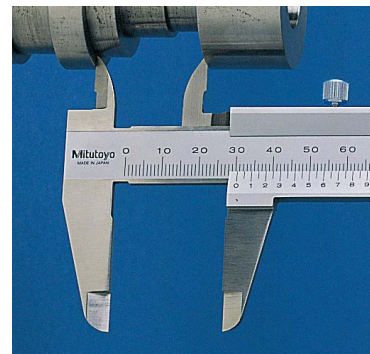
Order No.	Range (in)	Accuracy (in)	Depth bar	Graduation (in)	Remarks
530-105	0 - 6	±0.5/128	Blade	1/128	—
530-116	0 - 8	±0.5/128			

Measurement Applications

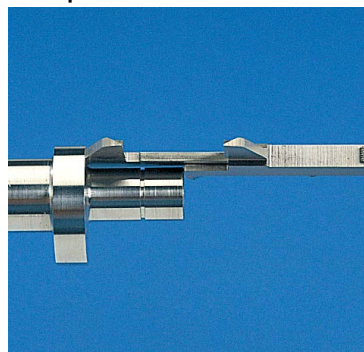
1. Outside measurement



2. Inside measurement



3. Step measurement



4. Depth measurement

